



Quality Products. Service Excellence.

## Horizontal Hinged Cable Manager *PCMDD Series*

### Features:

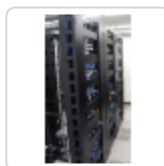


- Constructed in 16-gauge steel.
- Continuous hinged door with magnetic closure strip.
- Four oblong openings (3.5" x 1.56") top & bottom - allowing for cable exit top and/or bottom.
- Openings in the rear for cable entry.
- Designed to fit standard 19" rails.
- Requires mounting hardware.
- Finished in textured RAL9005 black powder paint finish.
- TAA-compliant for GSA Schedule purchases.
- RoHS and REACH compliant.
- Manufactured in North America.



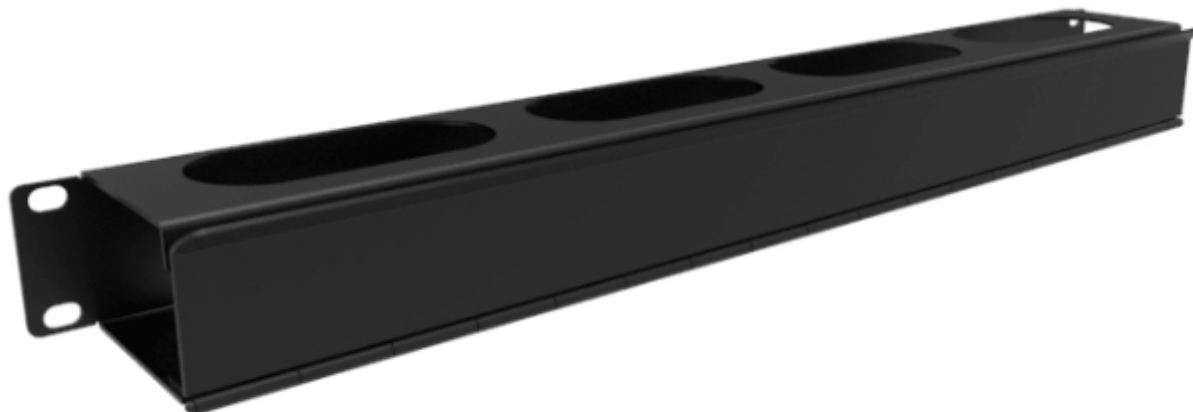
Looking for 4U managers? Check out our RB-HFMD Series of Hinged Horizontal Managers

### Gallery



### Accessories

- Mounting Hardware



| Part No.      | Overall Dimensions |       |       | Rack  | Usable Dimensions |       |       | Similar Size |
|---------------|--------------------|-------|-------|-------|-------------------|-------|-------|--------------|
|               | Height             | Width | Depth | Units | Height            | Width | Depth | Part No.     |
| PCMDD19001BK1 | 1.72               | 19.00 | 2.71  | 1U    | 1.25              | 17.62 | 2.50  | RB-HFMS1     |
| PCMDD19003BK1 | 3.47               | 19.00 | 2.71  | 2U    | 3.00              | 17.62 | 2.50  | RB-HFMS2     |
| PCMDD19005BK1 | 5.22               | 19.00 | 2.71  | 3U    | 4.75              | 17.62 | 2.50  | RB-HFMD3     |

Estimated Cable Fill Capacities

| Rack<br>Units | Description        | Opening   | Recommended Cable Fill (40% Fill Ratio) |  | Maximum Cable Fill (100% Fill Ratio) |  |
|---------------|--------------------|-----------|---|--|--------------------------------------|--|
|               |                    | Quantity  | Cat 6a                                  |  | Cat 6a                               |  |
| 1U            | Channel Opening    | 1         | 12                                      |  | 30                                   |  |
|               | Top/Bottom Opening | 2 x 4 = 8 | 15                                      |  | 38                                   |  |
|               | Rear Pass Through  | 0         | n/a                                     |  | n/a                                  |  |
| 2U            | Channel Opening    | 1         | 24                                      |  | 61                                   |  |
|               | Top/Bottom Opening | 2 x 4 = 8 | 15                                      |  | 38                                   |  |
|               | Rear Pass Through  | 4         | 11                                      |  | 28                                   |  |
| 3U            | Channel Opening    | 1         | 37                                      |  | 92                                   |  |
|               | Top/Bottom Opening | 2 x 4 = 8 | 15                                      |  | 38                                   |  |
|               | Rear Pass Through  | 4         | 11                                      |  | 28                                   |  |

Cable fill capacity will vary based on the cable manufacturer.

Data subject to change without notice

© 2024. Hammond Manufacturing Ltd. All rights reserved.