

# Eclipse Command System - NEMA 12

## Command Enclosure

Operator Interface Enclosure



Note: Shown with optional red handle

Panel  
Sold  
Separately



### Application

- Designed to enclose electronic controls, instruments and components in indoor environments where dirt, dust, oil and water may be present.
- Ideal for use with suspension systems.
- Multiple mounting provisions and full front mounting space provide for ideal operator interface.
- Smooth flush surfaces and attractive finishes compliment high tech equipment.

### Standards

- UL 508 type 12
- CSA type 12
- **Complies with**
  - NEMA Type 12 and 13
  - IEC 60529 IP54

### Construction

- Formed from 16 gauge steel.
- Smooth, continuously welded seams ground smooth.
- Door stiffeners are designed to also permit additional mounting options.
- Formed lip on enclosure to exclude flowing liquids and contaminants.
- Reversible rear door is secured with slotted quarter turn fasteners.
- Door frames have zinc die-cast corners with extrusion pressed aluminum profiles.
- Door front panels are 3mm aluminum.
- Oil resistant gaskets are permanently secured.
- Bonding stud provided on door and grounding stud installed in enclosure.
- Quarter turn latches formed from mild steel.
- Formed steel hinge with stainless steel hinge pins.
- Fastening is recommended with optional Tara Plus or 50/80 suspension systems  
...see page **286-297**
- Optional red handle easily mounts horizontally to bottom of enclosure front frame. Order separately  
...see page **285**
- Heavy duty re-inforcing plate included.

### Finish

- Finished in RAL 7040 gray powder coating.
- Door panel is natural aluminum.

### Accessories

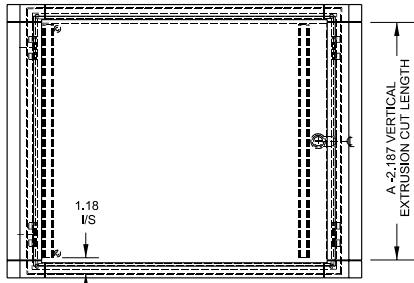
- Tara Plus suspension system...see page **286-291**
- 50 mm heavy duty suspension system...see page **286-297**
- 80 mm heavy duty suspension system...see page **286-297**
- Inner panels...see page **285**

Suspension System

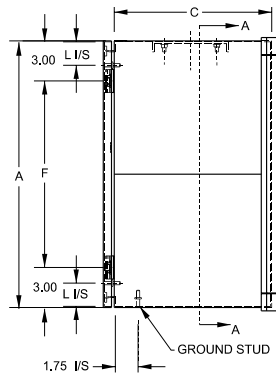
# Eclipse Command System - NEMA 12

## Command Enclosure

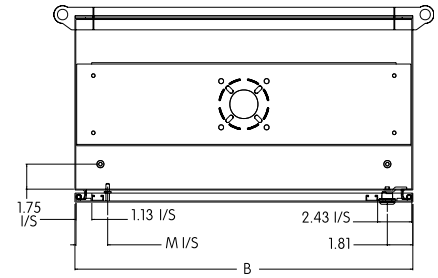
Operator Interface Enclosure



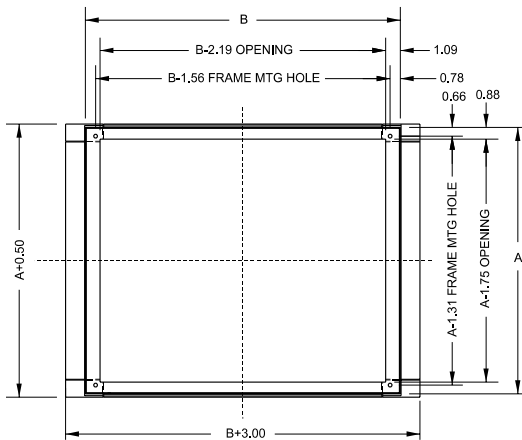
**Front View**



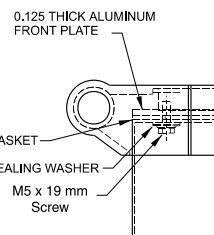
**Side View - Hinge Side**



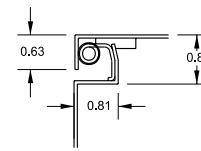
**End View Section**



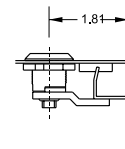
**Section A-A**



**Corner Detail**  
Typ. 4 Places



**Cross Section of 16 Gauge Body and Door**

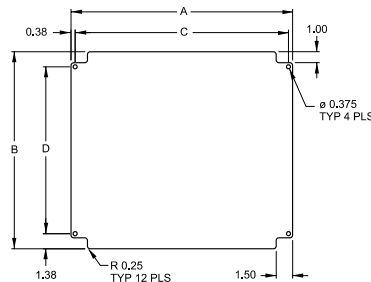


**Lock Section**

Part No.	Overall Dimensions						Optional Handle Part No.	Optional Panel Part No.	Ship Wt. lbs.
	A	B	C	F	L	M			
ECP12126	12	12	6	6.0	1.50	2.25	ECPH12	ECPP1212	17
ECP12168	12	16	8	6.0	1.50	2.25	ECPH16	ECPP1216	21
ECP161610	16	16	10	10.0	1.50	2.25	ECPH16	ECPP1616	29
ECP162010	16	20	10	10.0	1.50	2.25	ECPH20	ECPP1620	32
ECP20246	20	24	6	14.0	1.50	2.25	ECPH24	ECPP2024	34
ECP202412	20	24	12	14.0	1.50	2.25	ECPH24	ECPP2024	43

### Optional Inner Panel

- Panel mounts on the rear door of command enclosures.
- Unfinished aluminum is 0.08" thick.



Part No.	A	B	C	D
ECPP1212	8.25	10.00	7.50	7.25
ECPP1216	12.25	10.00	11.50	7.25
ECPP1616	12.25	14.00	11.50	11.25
ECPP1620	16.25	14.00	15.50	11.25
ECPP2024	20.25	18.00	19.50	15.25

### Optional Handle

- Easily mounts horizontally to bottom of enclosure front frame.
- Finished in red.



Part No.	Fits Enclosure
ECPH12	ECP12126
ECPH16	ECP12168, ECP161610
ECPH20	ECP1620
ECPH24	ECP202412, ECP20246

Suspension System