

1416 Series - NEMA 1 Ventilated Component Case



Commercial Enclosures

Application

- Designed to provide mechanical protection for components requiring ventilation.
- Suitable for use where heat dissipation is required.

Standards

- **Complies with**
 - NEMA Type 1

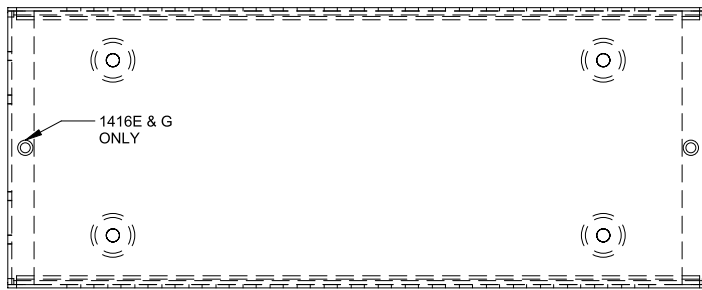
Construction

- Base is formed from 16 gauge steel with two 0.5"/0.75" conduit knock-outs located in each end.
- Four .125" high raised dimples with mounting holes are provided on the base.
- Cover is formed from 18 gauge steel with 0.235" x 1.5" ventilating slots (0.199" x 1.12" on E & G only).
- Screw holes and offsets in the cover allow easy assembly.

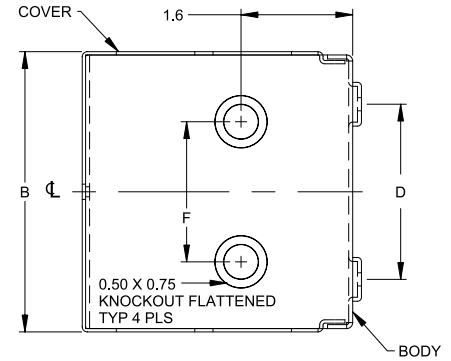
Finish

- Base and cover are finished in ANSI 61 gray powder coating.

1416 Series - NEMA 1 Ventilated Component Case

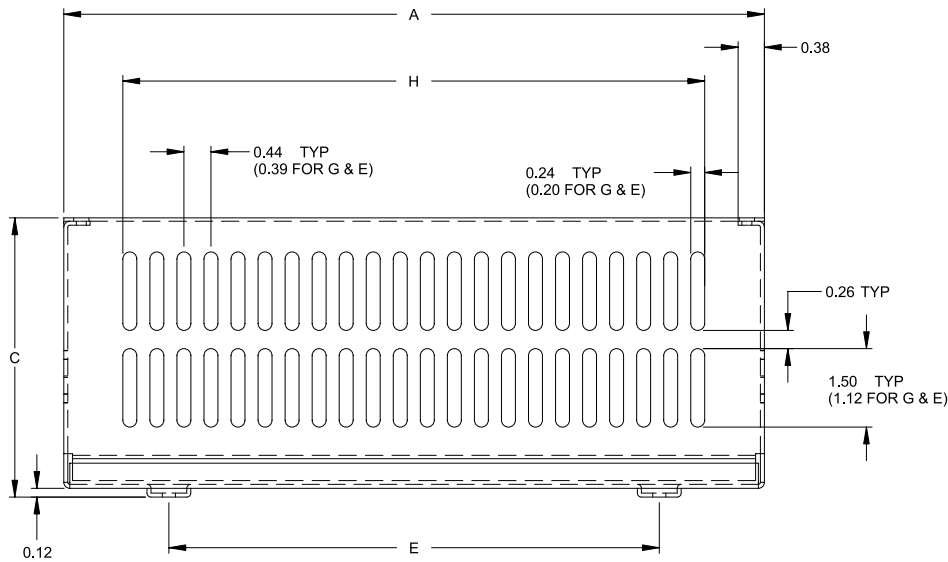


Top End



Side View

Commercial Enclosures



Front View

Part No.	Dimensions						Ventilated Area		Ship Wt. lbs.
	A	B	C	D	E	F	G	H	
1416E	6	4	4	2.5	4	2	2.50	4.06	2
1416G	10	4	4	2.5	7	2	2.50	8.31	2
1416I	10	6	6	4.5	7	3	3.25	7.68	4
1416K	11	7	7	5.5	8	4	5.00	7.68	6
1416M	12	8	8	6.5	9	5	5.00	10.31	8
1416O	15	10	8	8.5	12	6	5.00	12.93	10
1416Q	20	10	8	8.5	17	6	5.00	18.18	12
1416T	20	10	10	8.5	17	6	6.75	15.56	14