

## Heating Products



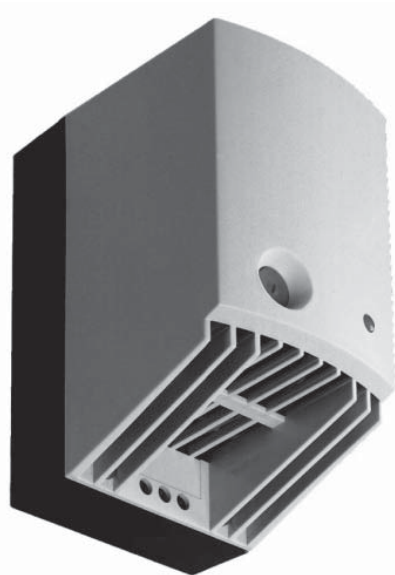
### Fan Heaters

- For use when larger heating capacities or internal forced air circulation is required.
- Designed to prevent condensation or maintain minimum temperature in enclosures.
- Thermostats are also available.



Part No.	Watts	Surface Temperature	Starting Current	Dimensions L x W x D	Ship Wt. lbs
<b>SHGL04600</b>	250 W	167°F	2.2 A	7.00 x 3.15 x 3.15	2
<b>SHGL04601</b>	400 W	167°F	3.5 A	9.76 x 3.15 x 3.15	3

<b>Operating Voltage:</b>	AC 110-120 V, 50/60 Hz
<b>Circulation Power:</b>	20 CFM Free Blowing
<b>Axial Fan:</b>	Ball bearing
<b>Durability:</b>	30,000 hrs. at 68°F ambient temperature
<b>Heating Element:</b>	Resistance heating element with temperature limiter
<b>Heating Body:</b>	Extruded aluminum, black anodized
<b>Connection:</b>	3 pole terminal for 12 AWG
<b>Mounting:</b>	Easily installed by clip mounting on 35 mm DIN rails (included)
<b>Protection Class:</b>	1 (tested for grounding at 1250 V)
<b>Protection:</b>	IP20
<b>Approval:</b>	UL Recognized Component, cUL Recognized Component, CE



### High Wattage Fan Heater

- For large heating capacity requirements.
- Maintains minimum operating temperatures in enclosures.
- Helps prevent failures to components caused by condensation and corrosion.
- Built-in thermostat and control light.
- Heating power adjusts to ambient temperature.
- Heat exits top of fan heater. (add 2" clearance for heat sensitive parts)

Part No.	Watts	Inrush		Temperature Maximum with Fan	Ship Wt. lbs
		Current (Amps)	Volts		
<b>SCR027009</b>	550 W	11 A	AC 120	250°F/120°C	2
<b>SCR027009230</b>	550 W	13 A	AC 230	250°F/120°C	2
<b>SCR027019</b>	650 W	12 A	AC 120	320°F/160°C	2.4

<b>Air Flow:</b>	20 CFM (550W), 26 CFM (650W)
<b>Thermostat Range:</b>	32 - 140 degrees Fahrenheit
<b>Heating Element:</b>	PTC - Semiconductor/resistor
<b>Housing:</b>	Plastic, rated UL94-VO
<b>Connection:</b>	3 pole terminal, AWG 14 max (2.5 mm <sup>2</sup> )
<b>Mounting:</b>	Clip for 35mm DIN rail
<b>Protection Class:</b>	II (Double Insulated)
<b>Protection Type:</b>	IP20
<b>Approval:</b>	UL Recognized Component, cUL Recognized Component, CE

