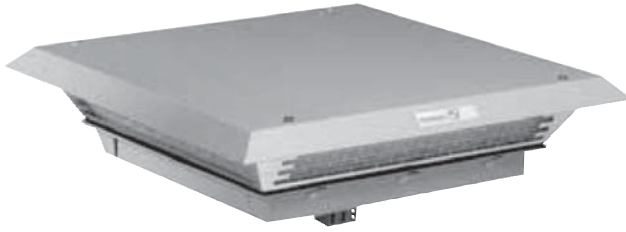


# Filterfan PTF 60500, PTF 60700, PTF 61000 / Exhaust Filter PTFA 60000



## Features

- Maintains a NEMA 12 seal against enclosure
- UL Recognized to UL 508a, category NITW2/8, UL File #E175229
- Patented "Click & Fit" design provides a hardware free installation!
- Metal Pagoda Cover for rugged environments, easily painted to match machine color
- Fan Motor is CSA Approved



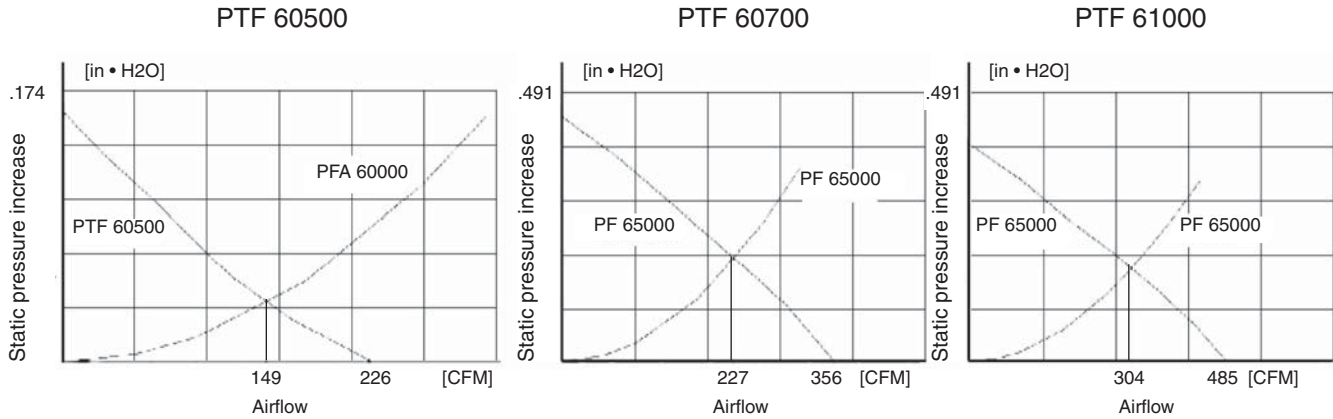
| Part Number   | Voltage | Power | Mating Exhaust Filter | Ship Wt. lbs. |
|---------------|---------|-------|-----------------------|---------------|
| PTF60500LG    | 115V    | 24W   | PFA60000LG            | 14            |
| PTF60500LG230 | 230V    | 24W   | PFA60000LG            | 14            |
| PTF60700LG    | 115V    | 90W   | PFA60000LG            | 14            |
| PTF60700LG230 | 230V    | 80W   | PFA60000LG            | 14            |
| PTF61000LG    | 115V    | 170W  | PFA60000LG            | 15            |
| PTF61000LG230 | 230V    | 150W  | PFA60000LG            | 15            |

| Airflow data   | PTF 60500         | PTF 60700               | PTF 61000               | PTFA 60000        |
|--|-------------------|-------------------------|-------------------------|-------------------|
| Filter material                                      | NEMA 12 Filtermat | NEMA 12 Filtermat       | NEMA 12 Filtermat       | NEMA 12 Filtermat |
| Unimpeded airflow                                    | 226 CFM           | 356 CFM                 | 485 CFM                 | -                 |
| Capacity free-flow                                   | 113 W/K           | 177 W/K                 | 242 W/K                 | -                 |
| Airflow in combination                               | 149 CFM           | 227 CFM                 | 304 CFM                 | -                 |
| (Filterfan + Exhaust Filter) (PTF 60500 + PFA 60000) |                   | (PTF 60700 + PFA 60000) | (PTF 61000 + PFA 60000) |                   |
| Capacity in combination                              | 74 W/K            | 113 W/K                 | 152 W/K                 | -                 |
| (Filterfan + Exhaust Filter) (PTF 60500 + PFA 60000) |                   | (PTF 60700 + PFA 60000) | (PTF 61000 + PFA 60000) |                   |
| Max. static pressure (Airflow = 0)                   | 71 Pa             | 88 Pa                   | 158 Pa                  | -                 |
| Filtration efficiency                                | 81 %              | 81 %                    | 81 %                    | -                 |
| Filter material grade                                | G 3 (DIN EN 779)  | G 3 (DIN EN 779)        | G 3 (DIN EN 779)        | -                 |
| Duty cycle   | 100%              | 100%                    | 100%                    | -                 |

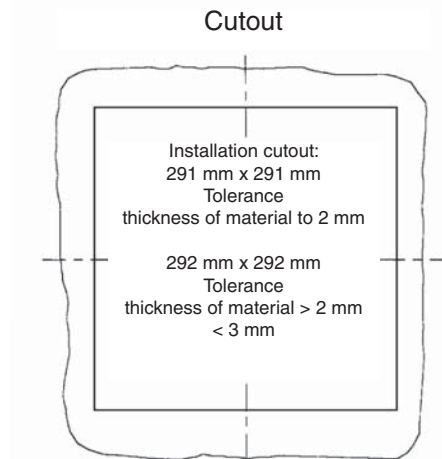
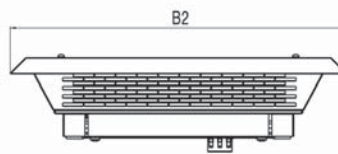
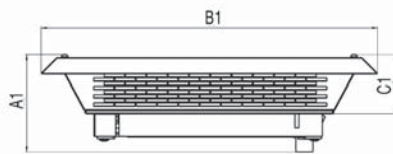
| Technical data   | PTF 60500   | PTF 60700            | PTF 61000            | PTFA 60000 |
|--|---|----------------------|----------------------|------------|
| Outside dimensions in mm (height x width x installation depth) | 125 x 430 x 430 x 50                                      | 140 x 470 x 470 x 50 | 140 x 470 x 470 x 50 | -          |
| Bearing type   | ball bearings   | ball bearings        | ball bearings        | -          |
| Fitting position   | horizontal  | horizontal           | horizontal           | any        |
| Construction   | metal chassis cover powder coated, snapin plastic housing |                      |                      |            |
| Weight   | 5.5 kg  | 5.8 kg               | 6.0 kg               | 3.1 kg     |
| Safety protection  | in accordance with DIN 31 001                             |                      |                      |            |
| Color  | RAL 7035, Light Grey                                      |                      |                      |            |
| Connections  | terminal strip  | terminal strip       | terminal strip       | -          |

# Filterfan PTF 60500, PTF 60700, PTF 61000 / Exhaust Filter PTFA 60000

## Airflow data:



## Mechanical data:



|       | PTF 60500 | PTF 60700 | PTF 61000 | PTFA 60000 |
|-------|-----------|-----------|-----------|------------|
| A1    | 125       | 140       | 140       | 110*       |
| B1/B2 | 430       | 470       | 470       | 430        |
| C1    | 75        | 90        | 90        | 75         |

| Airflow data:                      | PTFA 60000 |
|------------------------------------|------------|
| Filter material                    | P 300      |
| Filtration efficiency              | 81%        |
| Filter material grade (DIN EN 779) | G 3        |

| Technical data:   | PFTA 60000  |
|---|---|
| Outside dimensions in mm<br>(Height x Width x Depth x Installation depth) | 110 x 430 x 430 x 35  |
| Construction  | metal chassis, cover powder-coated; snap-in body of sprayed thermoplastic (ABS-FR) self-extinguishing, UL 94 VO |
| Weight  | 3.1 kg  |
| Safety protection   | in accordance with DIN 31 001   |
| Color   | RAL 7035, RAL 7032, other colors on request   |

| Supplementary data:           | PFTA 60000  |
|-------------------------------|---|
| Operating temperature         | -10 C (+14 F) to +55 C (+131 F)   |
| Storage temperature           | -20 C (-4 F) to +70 C (+158 F)  |
| Max. relative humidity        | 90%   |
| System of protection          | IP 33, IP 54 (EN 60 529), when installed as specified                     |
| Accessories                   | radiant heater, fan heater, thermostat, see Thermal Management            |
| Tolerance installation cutout | 291 thickness of material to 2 mm, 292 thickness of material > 2 mm < 3mm |
| Approvals                     | pending   |