

Cooling Unit Selection Guide

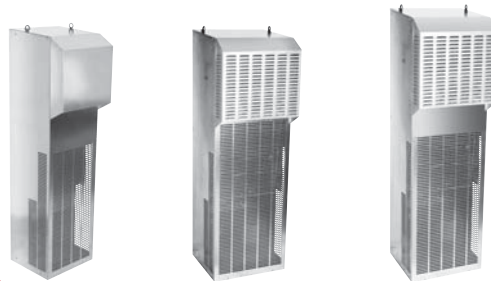


NEMA Type 12 Indoor - Side Mount:

| | DTS3341A230LG DTS3341A460LG | DTS3541A230LG DTS3541A460LG | DTS3641A230LG DTS3641A460LG |
|---------------------------|--------------------------------|--------------------------------|--------------------------------|
| Cooling Capacity (Btu/h*) | 12-14000 | 16-18000 | 20-24000 |
| External Airflow (CFM) | 991 | 1480 | 1612 |
| Internal Airflow (CFM) | 788 | 788 | 1612 |
| NEMA Type Rating | Type 12 | Type 12 | Type 12 |
| UL Listed or Recognized | Listed | Listed | Listed |
| Connection Type | Permanent | Permanent | Permanent |

Features

- Maintains a UL Tested NEMA Type 12 seal against enclosure
- UL Listed to UL 484, UL File #SA10300, CE approved
- Long internal airpath captures heat above components and provides cool air below!
- Powder coated steel cover for rugged environments, easily painted to match machine
- Uses Standard Control logic board
- Condensate Management built into design of unit



NEMA Type 3R/4 Outdoor:

| | DTS3361A230N3LG DTS3361A460N3LG | DTS3561A230N3LG DTS3561A460N3LG | DTS3661A230N3LG DTS3661A460N3LG |
|---------------------------|------------------------------------|------------------------------------|------------------------------------|
| Cooling Capacity (Btu/h*) | 12-14000 | 16-18000 | 22-24000 |
| External Airflow (CFM) | 991 | 1480 | 1612 |
| Internal Airflow (CFM) | 788 | 788 | 1612 |
| NEMA Type Rating | Type 3R/4 | Type 3R/4 | Type 3R/4 |
| UL Listed or Recognized | Listed | Listed | Listed |
| Connection Type | Permanent | Permanent | Permanent |

Features

- Maintains a UL Tested NEMA Type 3R/4 or 4/4X seal against enclosure
 - UL Listed to UL 484, UL File #SA10300, CE approved
 - Long internal airpath captures heat above components and provides cool air below!
 - Powder coated steel cover for rugged environments, easily painted to match machine
 - Uses Standard Control logic board and sump heater standard
 - Condensate Management built into design of unit
- Options: Low ambient package, Built-In enclosure heater

NEMA Type 4/4X Outdoor/Washdown:

| | DTS3381A230N4SS DTS3381A460N4SS | DTS3581A230N4SS DTS3581A460N4SS | DTS3681A230N4SS DTS3681A460N4SS |
|---------------------------|------------------------------------|------------------------------------|------------------------------------|
| Cooling Capacity (Btu/h*) | 12-14000 | 16-18000 | 20-24000 |
| External Airflow (CFM) | 991 | 1480 | 1612 |
| Internal Airflow (CFM) | 788 | 788 | 1612 |
| NEMA Type Rating | Type 4/4X | Type 4/4X | Type 4/4X |
| UL Listed or Recognized | Listed | Listed | Listed |
| Connection Type | Permanent | Permanent | Permanent |