



Quality Products. Service Excellence.

# Horizontal Finger Cable Manager *RB-HFMD Series*

## Features



- Metal components constructed in 16-gauge steel.
- Fingers constructed in black plastic.
- Snap-on, hinged door.
- Includes cutouts at rear for cable pass-through.
- EIA compliant.
- Metal components finished in textured RAL9005 black powder paint.
- Requires mounting hardware.
- TAA-compliant for GSA Schedule purchases.
- RoHS Compliant.
- Manufactured in North America.



For a doubled-sided manager, install two (2) managers mounted back-to-back. The rear opening provides a cable pass-thru.

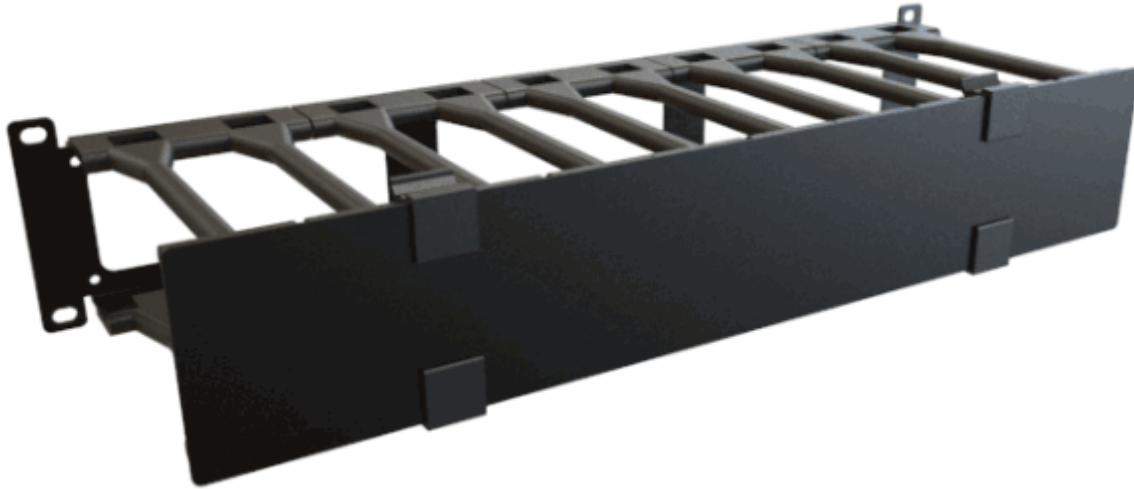
Part of the Rack Basics® line of economy rack solutions.

## Gallery



## Accessories

- Mounting Hardware
- Hook and Loop Roll



Part No.	Overall Dimensions			Usable Mounting Dimensions	
	Height	Width	Depth	Rack Units	Height
RB-HFMD1	1.47	19.00	6.50	1U	1.75
RB-HFMD2	3.22	19.00	6.50	2U	3.50
RB-HFMD3	5.22	19.00	6.50	3U	5.25
RB-HFMD4	6.97	19.00	6.50	4U	7.00

**Estimated Cable Fill Capacities**

Rack Units	Description	Recommended Cable Fill (50% Fill Ratio)		Maximum Cable Fill (100% Fill Ratio)	
		Cat 6	Cat 6a	Cat 6	Cat 6a
RB-HFMD1	Channel Opening	31	21	61	42
	Finger Opening	32	22	64	45
	Rear Pass Through	19	13	39	27
RB-HFMD2	Channel Opening	89	62	177	123
	Finger Opening	32	22	64	45
	Rear Pass Through	47	33	94	65
RB-HFMD3	Channel Opening	138	96	276	192
	Finger Opening	32	22	64	45
	Rear Pass Through	92	64	183	127
RB-HFMD4	Channel Opening	204	142	408	284
	Finger Opening	32	22	64	45
	Rear Pass Through	92	64	183	127

*Data subject to change without notice*

© 2022. Hammond Manufacturing Ltd. All rights reserved.