



*Quality Products. Service Excellence.*

## Economy Fixed Wall Mount Cabinet *RB-FW Series*

130 lbs (59 kg) Weight Capacity

### SPECIAL OFFER



### Features:

- Constructed in light-duty 16-gauge steel.
- Includes two (2) pairs of EIA compliant 19-inch square hole mounting rails.
  - Starter pack of (25) M6 screws, cage nuts and washers included.
  - For 10-32 hardware, please see our **CAGKIT Series**.
- Rails are adjustable.
- Includes one (1) locking tempered glass lightly smoked reversible front door.
- Includes one (1) pair of locking removable side panels.
- The front and side of the frame include venting for airflow.
- Rear cable access.
- Provision for optional fans on the top panel.
- Ships unassembled - some assembly is required.
- Meets PCI DSS (Payment Card Industry Data Security Standard) compliance requirements.
- Finished in black powder paint.
- Tested to 130 lbs (59 kg) of equipment load capacity.
- RoHS Compliant.

## RACK BASICS®

A HAMMOND BRAND



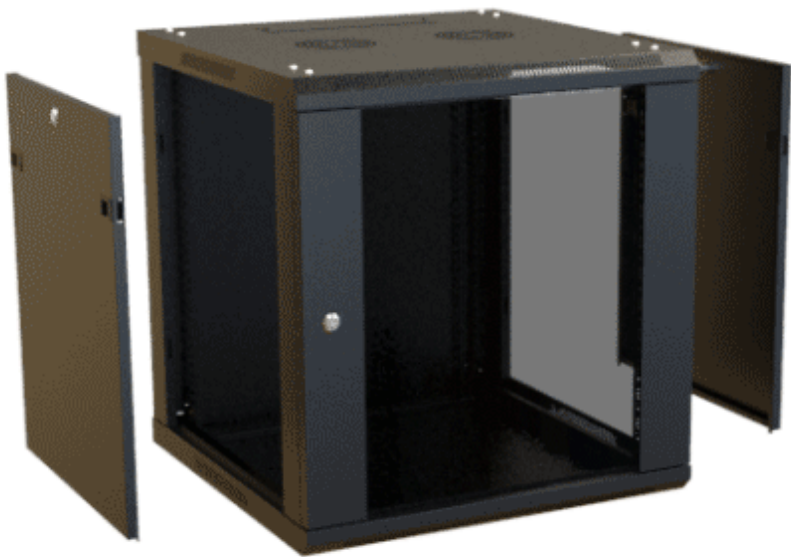
Part of the Rack Basics® line of value rack solutions.



This product is currently being relocated to a new factory outside its current country of origin. During this transition, we are also improving the product's design and features to better serve our customers. This transition will have an impact on the RB-FW, and we risk running out of stock.

### Accessories

- Horizontal Ring Cable Manager
- Cable Lacing Bar
- Fan Kits
- PDUs and Outlet Strips
- Horizontal Lacing Strip
- Universal Rack Shelf
- Mounting Hardware



Part No.	Overall Dimensions			Rack Units	Mounting Dimensions		
	Height	Width	Depth		Height	Width	Depth
RB-FW6	14.65	23.62	23.62	6U	10.50	19.00	21.24
RB-FW9	19.90	23.62	23.62	9U	15.75	19.00	21.24
RB-FW12	25.15	23.62	23.62	12U	21.00	19.00	21.24
RB-FW15	30.40	23.62	23.62	15U	26.25	19.00	21.24

Mounting Dimensions / Usable Depth is the maximum allowable equipment depth.

Tags: **knock-down, knock down**

*Data subject to change without notice*

© 2024. Hammond Manufacturing Ltd. All rights reserved.