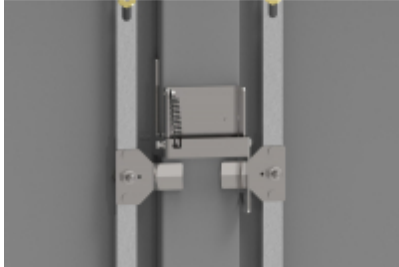




Quality Products. Service Excellence.

Mechanical Interlock *MIKIT Series*

Application



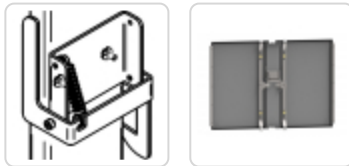
- Designed to mechanically interlock doors on 2 door cabinets featuring handles and a center-post design. Cam on slave door held in place until Master door opened. Either door can be made master door with this kit.
- Ideal for use with Hammond series that do not include a mechanical interlock as standard.
- Can be installed on 1422N4 (mild or stainless steel), HN4FM (mild or stainless steel), HN4WM (mild or stainless steel), and HN4FS 2 door units (mild or stainless steel).

Standards

- Does not compromise approval rating of enclosure.

Construction

- Kit includes: Base plate, spring, right and left slave bracket (user chooses appropriate), mounting hardware
- Formed from 10 gauge 304 stainless steel
- Finish is unpainted



Part No. **MIKIT**



Tags: 1422N4, HN4WM, HN4FM, HN4FS, interlock, mechanical, *Data subject to change without notice*
door, spring

© 2023. Hammond Manufacturing Ltd. All rights reserved.