



Quality Products. Service Excellence.

Type 12 Mild Steel Pushbutton Enclosures *1435 Series*



Application

- Designed to accept standard heavy duty oil tight pushbuttons, switches and pilot lights.
- Provides protection from dirt, dust, oil and water.

Standards

- UL 508A Type 12 and 13
- CSA Type 12 and 13
- **Complies with**
 - NEMA Type 12 and 13
 - JIC standard EGP-1-1967
 - IEC 60529, IP54
- Appropriate components are required to maintain these standards.

Construction

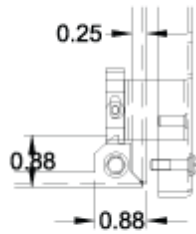
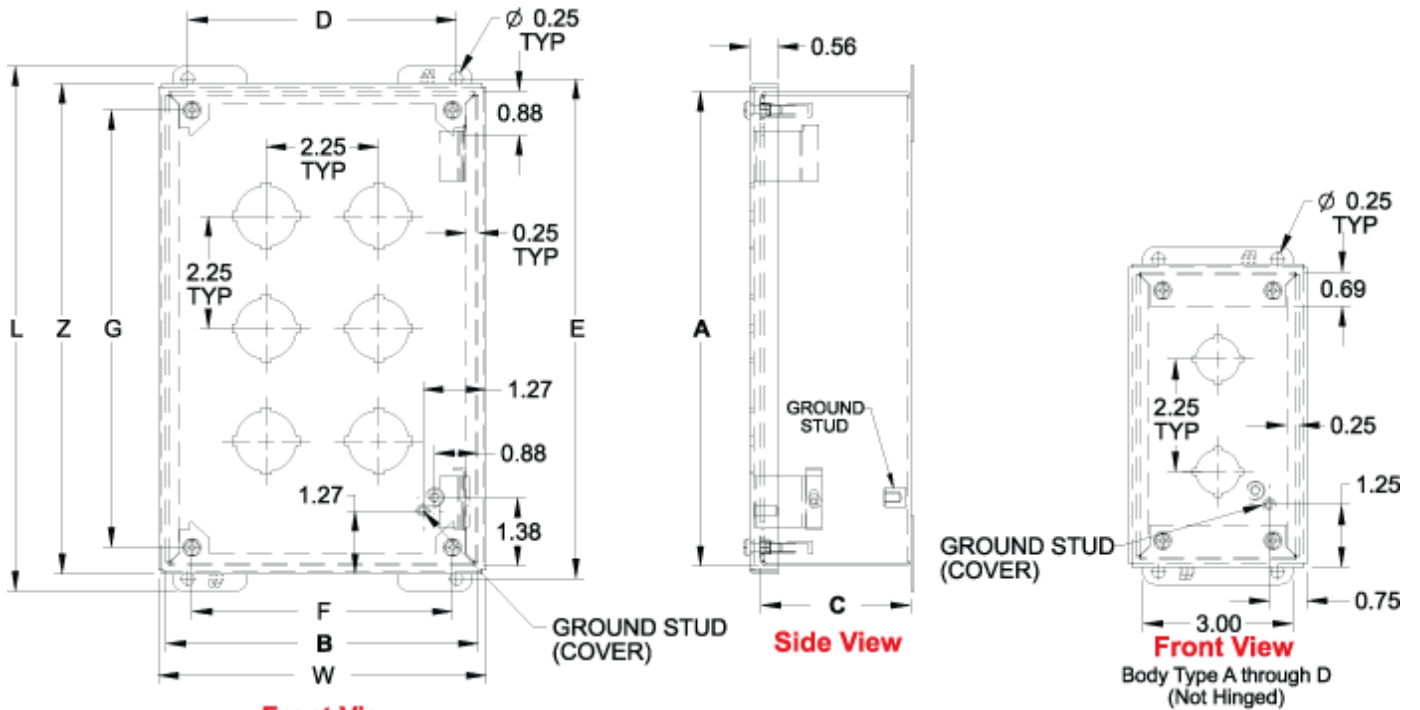
- Formed 14 gauge steel except
- A and B which are 16 gauge.
- Smooth continuously welded seams.
- Welded brackets provide for enclosure mounting.
- Captive cover screws thread into sealed wells.
- Larger enclosures provide internally hinged removable covers, designed to hold the cover open during wiring (see table).
- Oil resistant gasket and adhesive.
- A bonding stud is provided on the door and a grounding stud is provided on the enclosure.

Finish

- Cover and enclosure are phosphatized and finished in ANSI 61 gray powder coating.

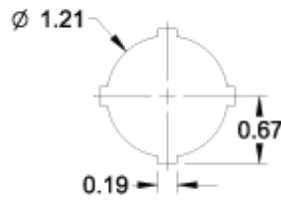
Accessories

- Hole Plugs
- Ground Wire Kits
- Pedestal and Base

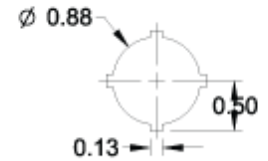


Hinge Detail

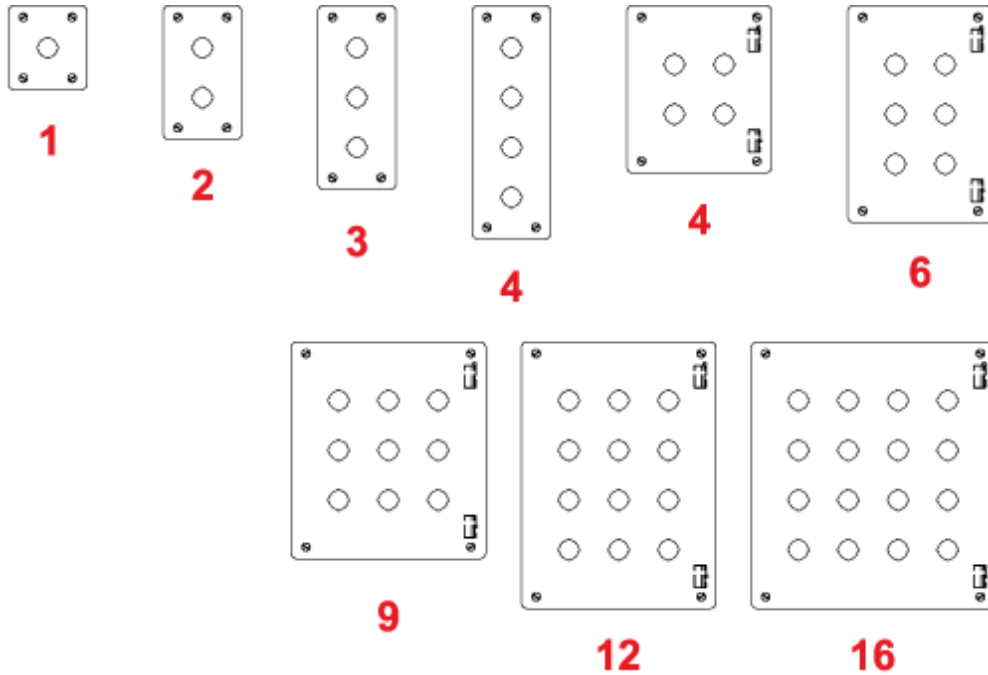
Retractable pin allows door to be mounted on left or right side



30.5mm Detail
(1435 Series)



22.5mm Detail
(1435M Series)



30.5mm	Part No.		No. of Holes	Overall Dimensions									
	22.5mm			A	B	C	D	E	F	G	L	W	Z
1435A ¹	1435MA ¹		1	3.50	3.25	2.75	2.38	4.00	2.21	2.75	4.50	3.56	3.81
1435B ²	1435MB ²		2	5.75	3.25	2.75	2.38	6.25	2.21	5.00	6.75	3.56	6.06

30.5mm	Part No.		No. of Holes	Overall Dimensions							L	W	Z
	22.5mm			A	B	C	D	E	F	G			
1435C ¹	1435MC ¹		3	8.00	3.25	2.75	2.38	8.50	2.21	7.25	9.00	3.56	8.31
1435D ¹	1435MD ¹		4	10.25	3.25	2.75	2.38	10.75	2.21	9.50	11.25	3.56	10.56
1435F	1435MF		4	7.25	6.25	3.00	5.38	7.75	5.21	6.50	8.25	6.56	7.56
1435H	1435MH		6	9.50	6.25	3.00	5.38	10.00	5.21	8.75	10.50	6.56	9.81
1435K	1435MK		9	9.50	8.50	3.00	7.63	10.00	7.46	8.75	10.50	8.81	9.81
1435O	1435MO		12	11.75	8.50	3.00	7.63	12.25	7.46	11.00	12.75	8.81	12.06
1435S	1435MS		16	11.75	10.75	3.00	9.88	12.25	9.71	11.00	12.75	11.06	12.06

¹ Not hinged

Data subject to change without notice

© 2018. Hammond Manufacturing Ltd. All rights reserved.