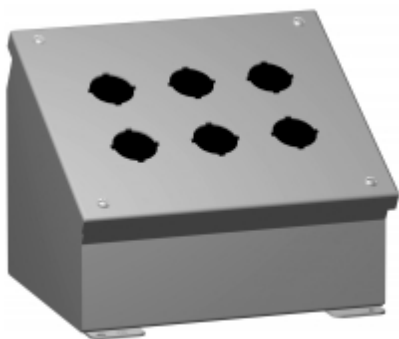




Quality Products. Service Excellence.

## Type 12 Mild Steel Pushbutton Enclosures 1490 Series

### Sloped Console



### Application

- Designed to accept standard heavy duty oil tight pushbuttons, switches and pilot lights.
- Ideal for wall or surface mounting to provide the necessary control slope.
- Provides protection from dirt, dust, oil and water.

### Standards

- UL 508A Type 12 and 13
- CSA Type 12 and 13
- **Complies with**
  - NEMA Type 12 and 13
  - IEC 60529, IP54
- Appropriate components are required to maintain these standards.

### Construction

- Formed 14 gauge steel.
- Smooth continuously welded seams.
- Construction provides either a 30° or 60° slope on front cover depending on mounting position.
- Welded brackets provide for enclosure mounting.
- Captive cover screws thread into sealed wells.
- Larger enclosures provide internally hinged removable covers designed to hold the cover open during wiring (as noted in table).
- Oil resistant gasket and adhesive.
- A bonding stud is provided on the door and a grounding stud is provided on the enclosure.

### Finish

- Cover and enclosure are phosphatized and finished in ANSI 61 gray powder coating.

### Accessories

- Hole Plugs
- Pedestal and Base
- General Accessories

**New and improved PDF part drawing files with more detail now available.**

Click part number in table below to access PDF, DXF, and STEP files.

| 30.5mm PB | 22.5mm PB | No. Of | Enclosure |
|-----------|-----------|--------|-----------|
|-----------|-----------|--------|-----------|

| Part No. PB         | Part No. PB          | Holes | H     | Enclosure W | D     |
|---------------------|----------------------|-------|-------|-------------|-------|
| 1490D1 <sup>1</sup> | 1490MD1 <sup>1</sup> | 1     | 3.50  | 3.25        | 4.88  |
| 1490D2 <sup>1</sup> | 1490MD2 <sup>1</sup> | 2     | 3.50  | 5.50        | 4.88  |
| 1490D3 <sup>1</sup> | 1490MD3 <sup>1</sup> | 3     | 3.50  | 7.75        | 4.88  |
| 1490D4 <sup>1</sup> | 1490MD4 <sup>1</sup> | 4     | 3.50  | 10.00       | 4.88  |
| 1490G4              | 1490MG4              | 4     | 7.25  | 6.25        | 6.75  |
| 1490G6              | 1490MG6              | 6     | 7.25  | 8.50        | 6.75  |
| 1490G8              | 1490MG8              | 8     | 7.25  | 10.75       | 6.75  |
| 1490H9              | 1490MH9              | 9     | 9.50  | 8.50        | 7.88  |
| 1490G10             | 1490MG10             | 10    | 7.25  | 13.00       | 6.75  |
| 1490G12             | 1490MG12             | 12    | 7.25  | 15.25       | 6.75  |
| 1490J12             | 1490MJ12             | 12    | 11.75 | 8.50        | 9.00  |
| 1490G16             | 1490MG16             | 16    | 7.25  | 19.75       | 6.75  |
| 1490J16             | 1490MJ16             | 16    | 11.75 | 10.75       | 9.00  |
| 1490J20             | 1490MJ20             | 20    | 11.75 | 13.00       | 9.00  |
| 1490K25             | 1490MK25             | 25    | 14.00 | 13.00       | 10.13 |
| 1490K30             | 1490MK30             | 30    | 14.00 | 15.25       | 10.13 |

<sup>1</sup> Not hinged

*Data subject to change without notice*

© 2021. Hammond Manufacturing Ltd. All rights reserved.