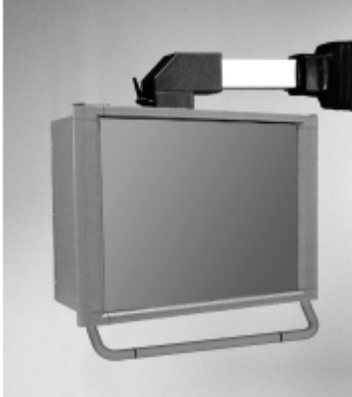




Quality Products. Service Excellence.

Heavy Duty 50/80 mm Suspension Systems *HDSS Series*

NEMA 12, 13



Application

- Command 50mm and 80mm enclosure suspension systems are designed for medium and heavy loads.
- The strength of square tube and cast fittings provide a highly flexible, robust system.

Standards

- Complies with
 - IEC 60529 IP54

Construction

- Enclosure coupling and elbow coupling fittings are die-cast from G Al Si 12 aluminum.
- All other fittings are die-cast 4G-s.g. iron.
- Suspension tubing is steel.

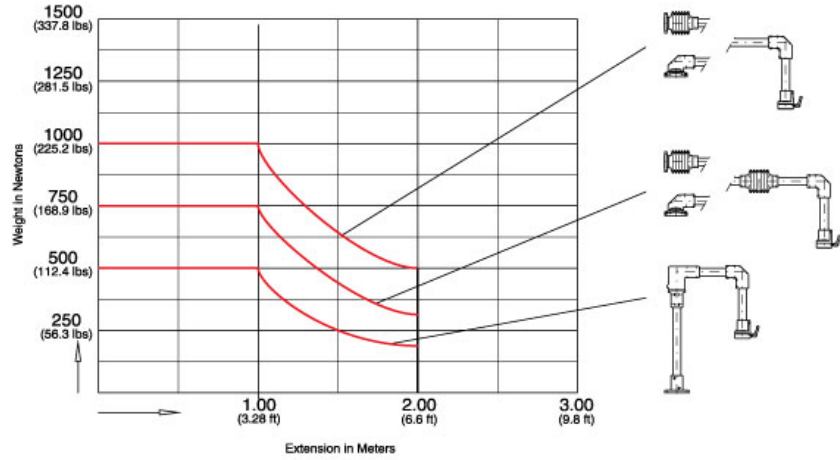
Finish

- Fittings are finished in RAL 7040 window gray powder coating.
- Suspension tubing is RAL 7035 light gray powder coating.

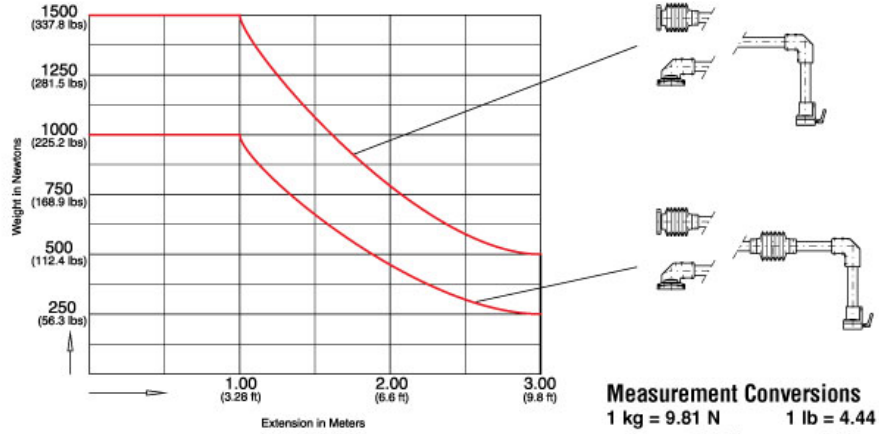
Accessories

- Suspension Tube
- Elbow Coupling
- Intermediate Joint
- Socket Joint
- Slope Adaptor
- Enclosure Coupling
- Elbow
- Wall Joint
- Cast Iron Base

Load Capacity for 50mm



Load Capacity for 80mm



Measurement Conversions
1 kg = 9.81 N **1 lb = 4.44 N**
 e.g. 500 Newtons = 51 kg = 112.4 lbs
 300 Newtons = 30.6 kg = 67.4 lb.
 100 Newtons = 10.2 kg = 22.5 lb.
1 foot = 0.305 m

Tags: heavy duty, 50mm, 80mm, suspension, operator, tube, fitting, medium duty

Data subject to change without notice

© 2023. Hammond Manufacturing Ltd. All rights reserved.