



*Quality Products. Service Excellence.*

## Vertical Basic PDU with Shielded Cord 1588-9-JV Series

15A or 20A | 120V Single-Phase | 5-15R or 5-20R Outlets

### Features

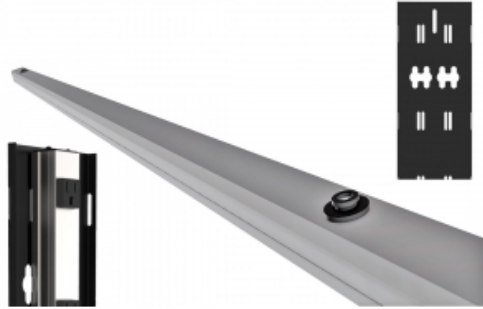


- Low-profile slim design.
- Constructed of rugged light weight aluminum.
- Designed for a variety of applications, specifically where electromagnetic or radio frequency interference is a concern:
  - Install in your server cabinets
  - Wall mount cabinets
  - Open frame racks
  - Or install horizontally above your work bench.
- Shielded cord reduces EMI/ RFI and "dirty" power from utilities.
- Shielding is by way of 100% coverage in aluminum mylar foil with a 20 gauge drain wire.
- Each outlet strip included a hardware mounting kit. Order P/N: **1585CLIP** for additional hardware kit.
- Includes toolless PDU button mounting provision.
- Receptacles are 1" square and are equally spaced over the length of the power strip.
- With on/off switch and 15 or 20 Amp circuit breaker.

### Specifications

- Heavy duty cord, either 12 gauge (12/3 SJT) or 14 gauge (14/3 SJT) wire for extreme temperature ranges and integral molded plug.
- Plug types for 15 Amp models are NEMA 5-15P straight blade or NEMA L5-15P locking type.
- Plug types for 20 Amp models are NEMA 5-20P straight blade or NEMA L5-20P locking type.
- Rated 15 or 20 amps, 120 volts.
- UL/cUL Listed Standard UL1363 file No. E166039 & CSA C22.2 No. 308-14 & CSA C22.2 No. 0.4-04
- NOTE #1: Outlet strips can NOT be used between the front & rear panel rails of rack cabinets as they (and the equipment plugs) will interfere with mounted equipment and mounted accessories.
- NOTE #2: To properly use on rack cabinets, allow sufficient depth BEHIND the rear panel rails for vertically mounting to the cabinet.

Toolless button PDU mounting provision shown



Four models each with a different plug type.



5-15P Straight Blade



L5-15P Locking Type



5-20P Straight Blade



L5-20P Locking Type

Part Number	Current Rating	Length	Number of Outlets	Cord Length	Shielded Cord	Color	NEMA Plug Type
1588H12B1JV	15A	77.00	12	15	Yes	Natural	5-15P
1588H12D1JV	15A	77.00	12	15	Yes	Natural	L5-15P
1589H77G1JV	20A	77.00	12	15	Yes	Natural	5-20P
1589H77D1JV	20A	77.00	12	15	Yes	Natural	L5-20P

*Data subject to change without notice*

© 2021. Hammond Manufacturing Ltd. All rights reserved.