



Quality Products. Service Excellence.

Type 4X Diecast Aluminum Enclosures R100 Series

aluNORM - Watertight, Thick Wall

Key Features:

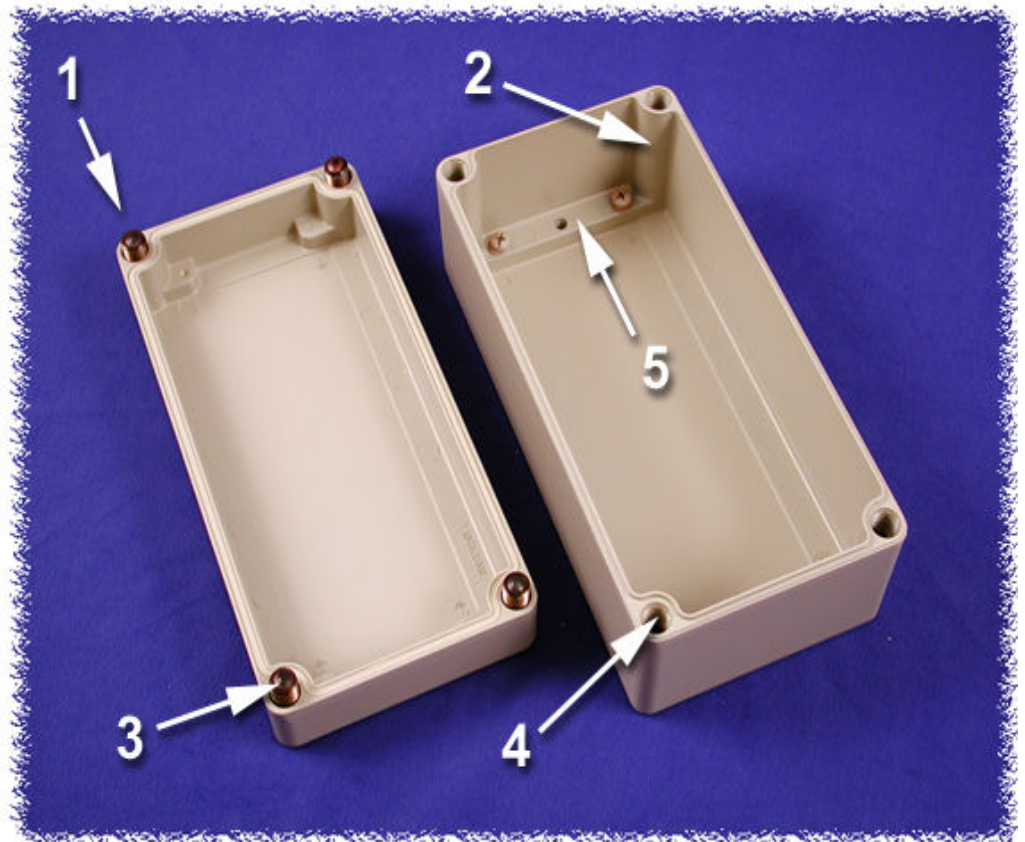
- Material - Aluminum die-cast: G Al SI 12 / DIN 1775
- Shallow lid, deep body
- Captive stainless steel lid screws
- Neoprene oil and petrol resistant gasket standard. (-40°C up to +80°C)
- Degree of protection NEMA 4X, IP66, DIN 40050
- Temperature Range (-40°C up to +80°C)
- Single-channel Fastening System
- Special developed external mounting feet made from zinc-die-cast. Can be turned through 90°. The fastening holes have engagement lugs for this purpose. (See accessories)
- All sizes have inner blind holes.
- An inner mounting panel - made of zinc-plated steel is also available (See accessories)
- Textured polyester powder coat, beige RAL7032 or light gray RAL7035. (can be supplied unpainted on special order)
- CSA certified, UL Listed, Type 4, for use with industrial control equipment.



Panel
Sold
Separately



Features

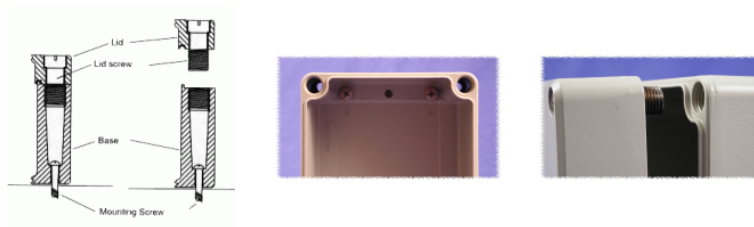


1. Lid screws and mounting holes outside of the gasket seal.

2. Space saving single channel mounting (ie...same hole used for mounting enclosure through rear and also for the lid), provides larger interior space than dual channel enclosures.
3. Captive stainless steel lid screws.
4. Enclosure holes threaded for easy installation and repetitive assembly & disassembly.
5. Internal mounting shelves placed along both sides of enclosure include blind holes and grounding screws.

Patented Single Channel System

- Provides larger interior space than dual channel enclosures.
- Uses the same enclosure hole for mounting the enclosure and fastening the lid.



Accessories (see table below for compatibility)



External Mounting Feet

Inner Panel

Hinge Kit

Shallow Lid, Deep Body (R100 Series)

Part No (RAL 7032 Beige)	Part No (RAL 7035 Light Gray)	Width	Length	Depth (Including Lid)
R100-060-000	R100-060-035	65	50	40
R100-062-000	R100-062-035	65	65	40
R100-064-000	R100-064-035	65	100	40
R100-066-000	R100-066-035	65	150	40
R100-080-000	R100-080-035	80	80	60
R100-082-000	R100-082-035	80	120	60
R100-084-000	R100-084-035	80	160	60
R100-100-000	R100-100-035	100	100	80
R100-102-000	R100-102-035	100	150	80
R100-104-000	R100-104-035	100	200	80
R100-120-000	R100-120-035	120	120	100
R100-122-000	R100-122-035	120	180	100
R100-124-000	R100-124-035	120	240	100
R100-160-000	R100-160-035	160	160	100
R100-162-000	R100-162-035	160	240	100
R100-164-000	R100-164-035	160	320	100
R100-166-000	R100-166-035	160	480	100
R100-200-000	R100-200-035	200	200	120
R100-202-000	R100-202-035	200	300	120
R100-204-000	R100-204-035	200	400	120
R100-240-000	R100-240-035	240	240	120

Part No (RAL 7032 Beige)	Part No (RAL 7035 Light Gray)	Width	Length	Depth (Including Lid)
R100-242-000	R100-242-035	240	360	120
R100-244-000	R100-244-035	240	480	120
R100-320-000	R100-320-035	320	320	120
R100-322-000	R100-322-035	320	480	120
R100-324-000	R100-324-035	320	640	120

Deep Lid, Shallow Body (R101 Series)

Part No.	Width	Length	Depth (Including Lid)
R101-080-000 ¹	80	80	60
R101-082-000 ¹	80	120	60
R101-084-000 ¹	80	160	60
R101-100-000 ¹	100	100	80
R101-102-000 ¹	100	150	80
R101-104-000 ¹	100	200	80
R101-120-000 ¹	120	120	100
R101-122-000 ¹	120	180	100
R101-124-000 ¹	120	240	100
R101-160-000 ¹	160	160	100
R101-162-000 ¹	160	240	100
R101-164-000 ¹	160	320	100
R101-166-000 ¹	160	480	100
R101-200-000 ¹	200	200	120
R101-202-000 ¹	200	300	120
R101-204-000 ¹	200	400	120
R101-240-000 ¹	240	240	120
R101-242-000 ¹	240	360	120
R101-244-000 ¹	240	480	120
R101-320-000 ¹	320	320	120
R101-322-000 ¹	320	480	120
R101-324-000 ¹	320	640	120

¹ R101 series enclosures are not stocking items. Please contact Hammond's sales team for more information.

Matching Lid & Body (R102 Series)

Part No.	Width	Length	Depth (Including Lid)
R102-080-000 ¹	80	80	40
R102-082-000 ¹	80	120	40
R102-084-000 ¹	80	160	40
R102-100-000 ¹	100	100	54
R102-102-000 ¹	100	150	54
R102-104-000 ¹	100	200	54
R102-120-000 ¹	120	120	66
R102-122-000 ¹	120	180	66
R102-124-000 ¹	120	240	66
R102-160-000 ¹	160	160	66
R102-162-000 ¹	160	240	66
R102-164-000 ¹	160	320	66
R102-166-000 ¹	160	480	66
R102-200-000 ¹	200	200	80
R102-202-000 ¹	200	300	80
R102-204-000 ¹	200	400	80
R102-240-000 ¹	240	240	80
R102-242-000 ¹	240	360	80
R102-244-000 ¹	240	480	80
R102-320-000 ¹	320	320	80
R102-322-000 ¹	320	480	80

Part No.	Width	Length	Depth (Including Lid)
R102-324-000 ¹	320	640	80

¹ R102 series enclosures are not stocking items. Please contact Hammond's sales team for more information.

aluNORM Accessories

For Use With Enclosure Types	External Feet (Set of 2 or 4) Part No.	Inner Panel 2mm, Galvanized Steel Part No.	Hinge (Set of 2) Part No.
R100, R101 & R102-060	N/A	N/A	N/A
R100, R101 & R102-062	N/A	R507-062-000	N/A
R100, R101 & R102-064	N/A	R507-064-000	N/A
R100, R101 & R102-066	N/A	R507-066-000	N/A
R100, R101 & R102-080	R501-002-080	R507-080-000	N/A
R100, R101 & R102-082	R501-002-080	R507-082-000	N/A
R100, R101 & R102-084	R501-002-080	R507-084-000	N/A
R100, R101 & R102-100	R501-002-100	R507-100-000	N/A
R100, R101 & R102-102	R501-002-100	R507-102-000	R510-000-000
R100, R101 & R102-104	R501-002-100	R507-104-000	R510-000-000
R100, R101 & R102-120	R501-000-011	R507-120-000	R510-000-000
R100, R101 & R102-122	R501-000-011	R507-122-000	R510-000-000
R100, R101 & R102-124	R501-000-011	R507-124-000	R510-000-000
R100, R101 & R102-160	R501-000-012	R507-160-000	R510-000-000
R100, R101 & R102-162	R501-000-012	R507-162-000	R510-000-000
R100, R101 & R102-164	R501-000-012	R507-164-000	R510-000-000
R100, R101 & R102-166	R501-000-012	R507-166-000	R510-000-000
R100, R101 & R102-200	N/A	R507-200-000	R510-000-000
R100, R101 & R102-202	N/A	R507-202-000	R510-000-000
R100, R101 & R102-204	N/A	R507-204-000	R510-000-000
R100, R101 & R102-240	N/A	R507-240-000	R510-000-000
R100, R101 & R102-242	N/A	R507-242-000	R510-000-000
R100, R101 & R102-244	N/A	R507-244-000	R510-000-000
R100, R101 & R102-320	N/A	R507-320-000	R510-000-000
R100, R101 & R102-322	N/A	R507-322-000	R510-000-000
R100, R101 & R102-324	N/A	R507-324-000	R510-000-000

Data subject to change without notice

© 2021. Hammond Manufacturing Ltd. All rights reserved.