



Quality Products. Service Excellence.

Hand-Hand "T" Soft Side Enclosures *1553T Series*

Soft Sides, Ergonomic Design, Battery Compartments

Key Features:



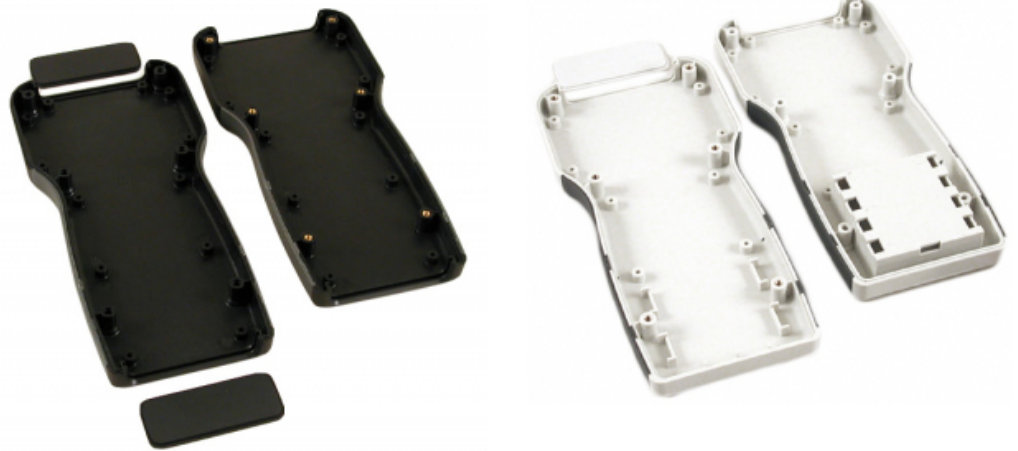
- Ergonomically designed for a comfortable fit into the user's hand.
- Choice of: two sizes, in two versions (with or without battery door) - in two colors (black or grey).
- Perfect for instrument or mobile data enclosures requiring a keypad and display.
- Both the display and keyboard areas are recessed for membrane devices.
- Molded from flame retardant ABS plastic, choice of black or light gray - material carries a UL flammability rating of 94V-0.
- Handheld section of enclosure includes a dark grey overmold, soft plastic grip.
- Enclosure is assembled with M3-0.5 x 18 mm Philips machine screws, threaded into integral brass bushings. Perfect for applications when repetitive assembly and disassembly are required.
- Integral brass bushings are factory inserted into top half of the enclosure (see photos).
- Lap joint construction provides protection against access of dust and splashing water. Designed to meet IP54.
- P.C. board standoffs are molded into the case top & bottom halves (see drawings or photos for more details).
- Battery door & compartment version (part numbers ending in "BAT") includes:
 - 1553TT "BAT" versions - 4 battery clips (for 2 - AA batteries) and one 9 volt (PP3) battery clip.
 - 1553T "BAT" versions - 8 battery clips (for 4 - AA batteries) and two 9 volt (PP3) battery clips.
- Contains either one or two end panels (depending on version - see table below) - removable for easy modification.
- Bottom half of enclosure includes molded in label recess on back:
 - 1553TT "BAT" versions - 1.73" x 1.3" (44 mm x 33 mm).
 - 1553T "BAT" versions - 2.2" x 1.65" (56 mm x 42 mm).

Photo Features

Internal features of non-battery version (in black). This version has two removable end

Internal features of battery version (in gray). This version has one removable end panel.

panels.



Battery versions include our long-life three point battery door.

Battery compartment includes (2) clips for (2) 9V (PP3) batteries.

Battery compartment includes (8) clips for (4) AA batteries.



Replacement Screws & Accessories

Screws

Replacement assembly machine screws sold in packs of 100.

- **1594MS100** (silver)
- **1594MS100BK** (black)

Self tapping PC board mounting screws sold in packs of 50 and 100

- **1593ATS50** (50-pack)
- **1593ATS100** (100-pack)

Belt Clips

- **1599CLIP** (black)
- **1599CLIPGY** (gray)



Extra Battery Clip Kits

- **1553HDR-BKIT** (4 positive and 4 negative clips) for AA
- **BS61** for 9V batteries



Part Numbers

Part Number	Color	Battery Type	Removable Top End Panel	Removable Bottom End Panel	Display Section Width	Keyboard Section Width	Enclosure Depth
							Length

Part Number	Color	Battery Type	Removable	Removable	Display	Keyboard	Length	Enclosure Depth
			Top End Panel	Bottom End Panel	Section Width	Section Width		
1553TTBK	Black	None	Yes	Yes	3.15	2.68	6.50	1.10
1553TTGY	Grey	None	Yes	Yes	3.15	2.68	6.50	1.10
1553TTBKBAT	Black	2 - AA or 1 - 9V	Yes	No	3.15	2.68	6.50	1.10
1553TTGYBAT	Grey	2 - AA or 1 - 9V	Yes	No	3.15	2.68	6.50	1.10
1553TBK	Black	None	Yes	Yes	3.94	3.38	8.27	1.26
1553TGY	Grey	None	Yes	Yes	3.94	3.38	8.27	1.26
1553TBKBAT	Black	4 - AA or 2 - 9V	Yes	No	3.94	3.38	8.27	1.26
1553TGYBAT	Grey	4 - AA or 2 - 9V	Yes	No	3.94	3.38	8.27	1.26

Replacement Panels & Battery Doors

Enclosure Size	Black End Panels (10-Pack)	Gray End Panels (10-pack)	Black Battery Doors (5-pack)	Gray Battery Doors (5-pack)
1553T	1553TPLBK-10	1553TPLGY-10	53TBATDOORBK-5	53TBATDOORGY-5
1553TT	1553TTPLBK-10	1553TTPLGY-10	53TTBATDOORBK-5	53TTBATDOORGY-5

Tags: **hand held, t-case,**

Data subject to change without notice

© 2022. Hammond Manufacturing Ltd. All rights reserved.