

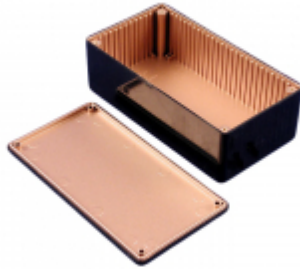


Quality Products. Service Excellence.

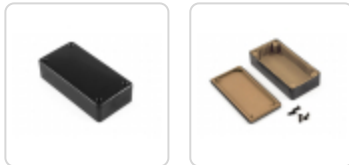
Multipurpose ABS Plastic Enclosures 1591R Series

EMI/ RFI Copper Conductive Coating Inside

Features:



- Ideally suited for vertical mounting of printed circuit boards; internal side walls include molded in card guides.
- Molded from flame retardant ABS plastic (material carries a UL flammability rating of 94V-0).
- Interior of each enclosure part is specially masked and sprayed with an RFI/EMI copper conductive coating (see photo above).
- Coating manufacturer specifies an attenuation of more than 75 db from 1 Mhz. to 1 Ghz.
- Designed to meet IP54.
- Lid is secured with M3 x 10 mm Philips machine screws, threaded into integral brass bushings. Perfect for applications when repetitive assembly and disassembly are required.
- Smooth black finish with black screws.



Accessories

- Plastic Flanges



Enclosures

Part Number	Color	Length	Width	Enclosure Depth Less Lid	Flange Kit
1591RLBK	Black	3.30	2.20	1.40	1591FLBK
1591RABK	Black	3.90	2.00	0.80	1591FABK
1591RSBK	Black	4.30	3.20	1.60	1591FSBK
1591RBBK	Black	4.40	2.40	1.10	1591FBBK
1591RCBK	Black	4.70	2.60	1.40	1591FCBK
1591RTBK	Black	4.70	3.20	2.20	1591FTBK
1591RUBK	Black	4.70	4.70	2.20	1591FUBK
1591RVBK	Black	4.70	4.70	3.50	1591FUBK
1591RGBK	Black	4.80	3.70	1.20	1591FGBK
1591RDBK	Black	5.90	3.20	1.80	1591FDBK
1591RHBK	Black	6.50	2.80	1.00	1591FHBK
1591REBK	Black	7.50	4.30	2.20	1591FEBK

Data subject to change without notice

