

Four Post Mounting Fixed Chassis Shelf *RASC Serie*

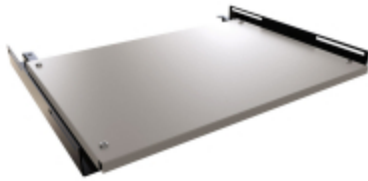
Load rated to 85 lbs (39 kg)



Note: This product line will be discontinued on September 10, 2026 at which time it will only be available while supplies last. No returns will be possible after the discontinuation date.

The suggested replacement will be **RF Series**. For alternative solution assistance, please **contact Hammond here** or call: USA (716) 630-7030, Canada and International (519) 822-2960.

Features



- Constructed of 18-gauge steel (shelf) and 14-gauge (brackets).
- The shelf can be used as a permanently mounted support shelf or as a pull-out chassis.
- Will also accept type **RSLIDE** equipment rail slides for pull-out applications.
- Includes all mounting hardware.
- 85 lbs (39 kg) **load rating**.
- Finished in a smooth white powder coat. Complies with the Greenguard guidelines for indoor air quality.
- TAA-compliant for federal GSA schedule purchases within the USA.
- RoHS and REACH compliant.
- Manufactured in North America.



Please note that to mount this product, you must have two (2) pairs of combination rails within your cabinet. To mount this product to a traditional equipment rack, please order the FSRA or see our RAAB Series.

Galería



Accesorios

- Chassis Sliding Rack Rail Kit
- Fixed Shelf Rail Adapter
- Extender Bracket for Sliding Shelves
- Hardware for Rack Mounting Solutions

Part No.	Overall Dimensions			Shelf Dimensions		
	Height	Width	Depth	Height	Width	Depth
RASC1912W H2	1.32	17.85	13.74	0.50	16.65	12.00
RASC1916W H2	1.32	17.85	16.00	0.50	16.65	16.00
RASC1922W H2	1.32	17.85	22.00	0.50	16.65	22.00

Datos sujetos a cambios sin previo aviso.

© 2026. Hammond Manufacturing Ltd. Todos los derechos reservados.