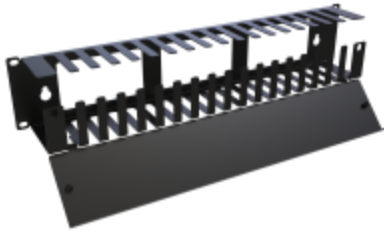



hammondmfg.com

Horizontal Cable Manager and Wall Mount Cable Claw *RB-HSF Serie*

Dual-purpose cable manager designed for rackmount or wall-mounted cable routing and support.

TOP SELLER



Key Features and Benefits

- 16-gauge steel construction provides durable cable support for rackmount and wall-mounted applications.
- Dual-purpose design supports installation in standard 19-inch racks or as a wall-mounted cable claw.
- Finger-style openings organize and route cables while maintaining accessibility.
- Snap-open, lift-off hinged door allows quick access for cable moves, adds, and changes.
- Rear openings support cable pass-through and flexible routing.
- Available in 1U and 2U sizes to support varying cable density requirements.
- Includes wall mounting points for non-rack applications, enabling use as a cable claw alternative.
- TAA-compliant, manufactured in North America supports government procurement requirements and ensures consistent quality.
- Black powder coat finish (GREENGUARD, TSCA, RoHS compliant) supports indoor air quality and environmental compliance.

RACK BASICS®

A HAMMOND BRAND



The RB-HSF Series cable managers provide a flexible solution for organizing and supporting cables in both rack and wall-mounted installations. Designed to function as a traditional horizontal cable manager or as a cable claw, the series offers versatility that simplifies installation and reduces the need for multiple accessories.

Unlike typical cable claws that are limited to wall-mounted use, the RB-HSF Series can be installed directly in 19-inch racks or mounted to a wall, making it ideal for structured cabling environments where cable routing needs may change over time.

Where the RB-HSF Series Works Best

- Telecom and structured cabling installations.
- Network closets and IT rooms.
- Wall-mounted backboard environments.
- AV and low-voltage installations.
- Installations requiring flexible cable routing solutions.

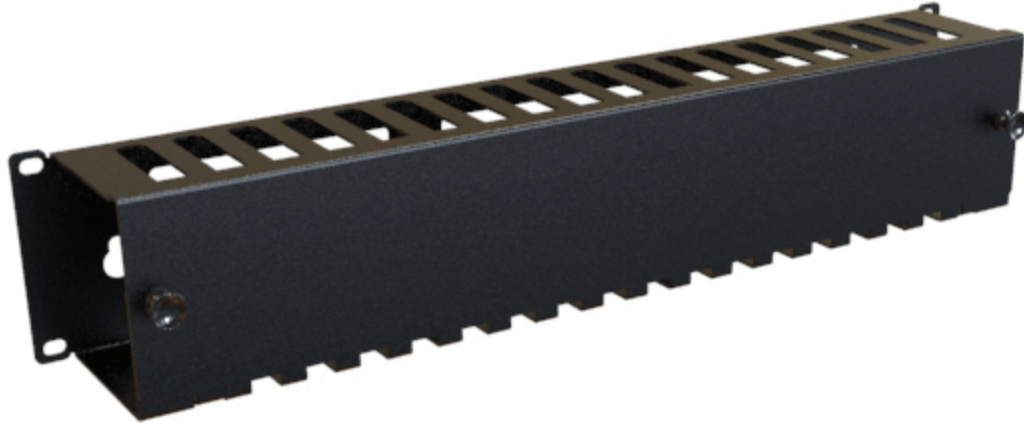
Best Applications for the RB-HSF Series

- Supporting cable bundles on plywood backboards or walls.
- Organizing horizontal patch cables within racks.
- Replacing traditional cable claws with a dual-purpose solution.
- Routing cables between rack and wall-mounted equipment.
- Providing accessible cable management for frequent changes.

Part of the Rack Basics® line designed for simple, reliable, and affordable installations.

Accessories

- Hardware for Rack Mounting Solutions



Part No.	Height	Overall Dimensions			Rack Units
		Width	Depth		
RB-HSF1	1.75	19.00	3.06		1U
RB-HSF2	3.50	19.00	3.06		2U

Estimated Cable Fill Capacities

Rack Units	Description	Opening Quantity	Recommended Cable Fill (50% Fill Ratio)			Maximum Cable Fill (100% Fill Ratio)		
			Cat 5e	Cat 6	Cat 6a	Cat 5e	Cat 6	Cat 6a
1U	Channel Opening	1	35	22	16	70	45	31
	Per Finger Opening	36	16	10	8	32	20	14
	Rear Pass Through	3	63	26	18	82	52	54
2U	Channel Opening	1	76	48	34	151	97	67
	Per Finger Opening	36	16	10	8	32	20	14
	Rear Pass Through	3	63	26	18	82	52	54

Tags: horizontal cable manager, cable claw, wall mount cable manager, rack cable organizer, cable support bracket, cable routing rack, 1U cable manager, 2U cable manager

Datos sujetos a cambios sin previo aviso.

© 2026. Hammond Manufacturing Ltd. Todos los derechos reservados.