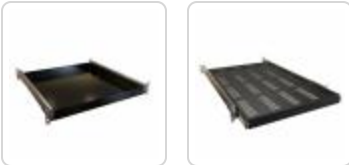


Rack Mount Sliding Shelf *RSUS Serie*

Load rated up to 130 lbs (59 kg)

Features



- Constructed of 16 gauge steel.
- Easily access non-rack mountable equipment in a server cabinet or 4-post rack.
- Requires two (2) pairs of mounting rails.
- It can be used as a surface shelf or capacitive tray.
- Heavy-duty ball-bearing slides included
- The slides feature a stopping mechanism, preventing the shelf from accidentally falling out of the slide tray.
- Up to 130 lbs (59 kg) **load rating**.
 - Slides are tested to BIFMA Standards with load capacity @ 12 times/minute for 55000 cycles minimum.
- Rugged textured powder paint coat. Complies with the Greenguard guidelines for indoor air quality.
- TAA-compliant for federal GSA schedule purchases within the USA.
- RoHS and REACH compliant.
- Manufactured in North America.



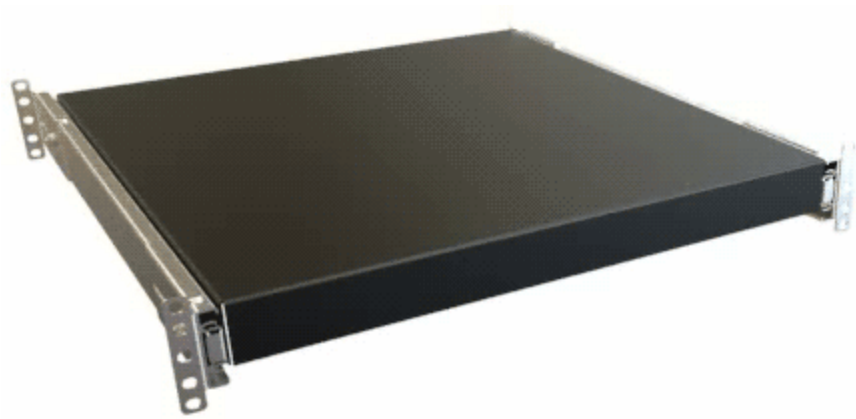
Enhance your workspace with the **Rack Mount Sliding Drawer** from Hammond, designed for optimal storage in rack-mounted settings. Made from high-quality materials, this durable drawer features a smooth sliding mechanism for easy access to tools and accessories. Its versatile design accommodates various applications, from servers to office supplies, and installation is simple with compatibility for standard rack sizes. By utilizing this sliding drawer, you can maximize your space and keep your area organized, making it a valuable addition to any setup.



Note: The mounting of this shelf requires 3U of mounting space and is not designed for product mounting directly above or below.

Accesorios

- Hardware for Rack Mounting Solutions
- Hook and Loop Cable Straps Pre-Cut 96 Inch
- Chassis Sliding Rack Rail Kit
- Rack Shelf Slide Block
- Extender Bracket for Sliding Shelves
- Rack Equipment Installation Tool



Solid Part No.	Vented Part No.	Overall Dimensions		Shelf Dimensions			Rail Mounting Depth		Slide Travel	Weight Capacity
		Height	Width	Height	Width	Depth	Min	Max		
RSUS1918B K1	RSVS1918B K1	2.68	18.89	1.50	16.64	18.12	6.00	20.00	18.00	130 lbs (59 kg)
RSUS1921B K1	RSVS1921B K1	2.68	18.89	1.50	16.64	21.00	12.00	21.00	20.00	114 lbs (52 kg)
RSUS1926B K1	RSVS1926B K1	2.68	18.89	1.50	16.64	26.12	16.00	27.75	26.00	94 lbs (43 kg)
RSUS1931B K1	RSVS1931B K1	2.68	18.89	1.50	16.64	31.00	18.00	28.00	28.00	85 lbs (39 kg)

Tags: **sliding rack cabinet**

Datos sujetos a cambios sin previo aviso.

© 2026. Hammond Manufacturing Ltd. Todos los derechos reservados.