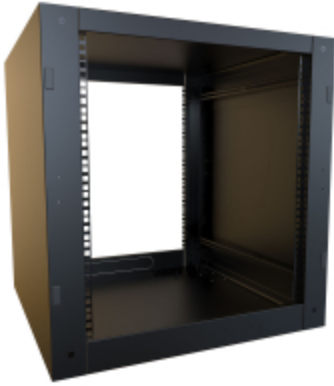


Stackable Server Rack Cabinet (1500 lb) *RCSC Serie*

Knock-down stacking server rack cabinet designed for scalable IT, AV, and edge deployments with vertical expansion capability.



Key Features and Benefits

- 16-gauge steel construction (1500 lb **capacity**) provides reliable support for server, network, and AV equipment.
- Stackable cabinet design allows vertical expansion by combining multiple cabinets, supporting up to three 12U or two 24U units using a baying kit.
- Knock-down design (ships unassembled) supports easier transport, handling, and installation in constrained spaces.
- Two (2) pairs of infinitely adjustable EIA-310 compliant square hole mounting rails (14-gauge steel) support flexible equipment installation. Includes a starter pack of cage nuts and mounting hardware.
- Compact cabinet footprint (24" width) supports deployment in small IT rooms, offices, and edge environments.
- Cable entry knockouts and rear gland plate support organized cable routing and airflow integration.
- Optional doors (solid, vented, or window) support airflow control and equipment protection.
- Grounding studs and support for casters or leveling feet support safe installation and deployment flexibility.
- Black powder coat finish (GREENGUARD, TSCA, RoHS compliant) supports indoor air quality and environmental compliance.



The RCSC Series stacking server rack cabinet provides a scalable solution for IT, AV, and edge environments where space is limited. With a 1500 lb load rating and a unique stacking design, it allows users to expand vertically as equipment needs grow.

Designed for flexibility, the RCSC ships unassembled for easier handling and supports adjustable mounting rails, cable management, and optional doors, making it ideal for small business, homelab, and distributed infrastructure deployments.

When another product may be a better choice

- When you need a modular cabinet system for scalable configurations with threaded rails, consider our **RCK** Series.
- When you need a cost-effective assembled cabinet available in 24U or 42U, consider our **RB-DC** Series.
- When you need a 24U or 42U cabinet for rapid deployment in data center environments, consider our **C4RR_A** Series.
- When you need a multi-tenant cabinet with segmented access for shared environments, consider our **CLC** Series.

Galería



Accesorios

- Universal Rack Shelf Fixed Steel (Up to 200 lb Capacity)
- Rack Mount Locking Storage Drawer
- Sliding Keyboard Shelf
- We Manufacture PDUs and Outlet Strips
- Adjustable Depth Cable Manager Front to Rear Rack Cable Support
- Horizontal Cable Management Bar Steel Cable Support Bar
- Rack and Cabinet Caster Set
- Leveling Feet
- Ground Stud Kit
- Adjustable Server Rack Shelf
- Rack Mount Sliding Shelf
- Mounting Screw and Cage Nut Combo-Pack
- RMU Label Kit (Set of 2)
- Horizontal Finger Cable Manager with Cover
- Rack Panels for Rack Optimization
- Bonding and Grounding
- Heavy Duty Cooling Fan Kits
- Rack Shelf Slide Block



| Part No. | Overall Dimensions | | | Rack Units | Usable Mounting Dimensions | | |
|--------------------|--------------------|-------|-------|------------|----------------------------|-------|-------|
| | Height | Width | Depth | | Height | Width | Depth |
| RCSC1902136BK 1 | 25.00 | 24.00 | 36.00 | 12U | 21.00 | 19.00 | 34.42 |
| RCSC1904236BK 1 | 46.00 | 24.00 | 36.00 | 24U | 42.00 | 19.00 | 34.42 |

Optional Doors

| Part No. | Part No. | Part No. | Use with Cabinet Panel Height | |
|----------------|----------------|--------------------|-------------------------------|------------|
| | | | Units | Rack Units |
| Solid Door | Vented Door | Vented Window Door | | |
| RCSC19021SDBK1 | RCSC19021VDBK1 | RCSC19021WDBK1 | 21.00 | 12U |
| RCSC19042SDBK1 | RCSC19042VDBK1 | RCSC19042WDBK1 | 42.00 | 24U |

RCSC Baying Kit

| | |
|----------|---------|
| Part No. | RCSCBAY |
|----------|---------|

Where the series works best

- Small IT rooms and edge deployments.
- SOHO (small office / home office) environments.
- AV and media installations.
- Homelab and development setups.
- Applications requiring compact cabinet solutions with future growth.

Applications and when to use the series

- Installations requiring compact server rack cabinets (up to 1500 lb).
- Applications needing vertical expansion instead of larger floor footprint.
- Environments where equipment grows over time and scalability is required.
- Deployments requiring knock-down cabinets for easier transport and installation.
- Installations supporting IT, AV, or edge infrastructure in limited space.

Tags: **stackable rack cabinet, stacking server rack, small server cabinet, network cabinet, IT cabinet, homelab rack, AV rack cabinet, edge cabinet, rack enclosure, server enclosure, compact cabinet**

Datos sujetos a cambios sin previo aviso.