

Environmental Wall-Mount Cabinet, Type 12, IP56 (350 lb) *NWC Serie*

Sealed wall-mount cabinet combining UL2416 load rating, UL Type 12 protection, IP56 testing, and climate control options for industrial and IT environments.



Key Features and Benefits

- 14-gauge welded steel construction UL2416 Type 12 rated to 350 lb (158 kg), seismic rated to 200 lb (90.72 kg) supports network and industrial equipment in demanding environments.
- Double-hinged cabinet design (19" rack compatible) provides dual access to equipment for installation, servicing, and maintenance.
- Sealed enclosure with gasketed doors protects equipment from dust, dirt, and dripping liquids in industrial environments.
- Two (2) pairs of adjustable 10-32 threaded mounting rails (EIA compliant) support flexible equipment positioning and standard rack compatibility. Includes starter hardware pack with **SCREW1032-50** screws for equipment installation.
- Available in three configurations to match application requirements:
 - "N" Version comes without climate control or cutouts.
 - "F" Version includes rear and door filters that maintain UL Type 12 ratings and are compatible with fan kits.
 - "A" Version includes a factory-supplied 900–1300 BTU **DTS3021A115LG** air conditioner (shipped inside the cabinet) with cord.
- Dedicated bonding and grounding points support proper electrical installation and bonding of all cabinet components.
- External mounting feet and rear pan design support secure wall installation and cable entry.

Compliance and Certifications

- **UL2416** Type 12 rated enclosure (350 lb load rating) combines structural load rating with environmental protection in a single cabinet.
- Independently tested to IEC 60529, IP56 provides protection against dust ingress and powerful water jets.
- Seismic rated to 200 lb (90.72 kg) dynamic load ($I_p = 1.5$) in accordance with IBC 2018, CBC 2019, NBC 2018, ASCE 7-16, and ASCE 7-10.
- Meets PCI DSS (Payment Card Industry Data Security Standard) compliance requirements.
- TAA-compliant, manufactured in North America supports government procurement requirements and ensures consistent quality.
- Black or light gray powder coat finish (GREENGUARD Gold, TSCA, RoHS compliant) supports indoor air quality and environmental compliance.

The NWC Series environmental wall-mount cabinet uniquely combines UL2416 load rating and UL Type 12 environmental protection in a single enclosure. Independently tested to IP56 and designed for seismic-rated installations, it provides a sealed solution for network and industrial equipment in demanding environments.

Available in three configurations, including sealed (N), filtered (F), and air-conditioned (A) options, the NWC supports a wide range of applications requiring environmental protection,

airflow management, or active cooling. Ideal for industrial, edge computing, and IDF deployments where reliability is critical.

Where the NWC series works best

- Industrial environments with dust, dirt, or water exposure.
- Facilities requiring sealed and climate-controlled network enclosures.
- Critical infrastructure requiring UL2416 and environmental protection.
- Manufacturing, automation, and processing environments.
- Edge computing and IDF deployments in harsh environments.

Applications and when to use the NWC series

- Installations requiring UL2416 load-rated cabinets with UL Type 12 environmental protection.
- Applications needing sealed enclosures with IP56-tested protection.
- Environments requiring filtered airflow or active cooling options (N, F, A configurations).
- Deployments requiring seismic-rated enclosures for regulated environments.
- Installations where equipment reliability depends on environmental isolation and protection.

When another product may be a better choice

- When you need an indoor wall-mount cabinet with light dust resistance but do not require a Type 12 rating, consider our **HWC** Series with the **HWCF** filter kit installed. This provides a significantly lower-cost alternative.
- When you need an outdoor-rated cabinet with enhanced environmental protection, consider our **NWM** Series.
- When you need a free-standing cabinet for floor-mounted installations, consider our **HDME** Series.

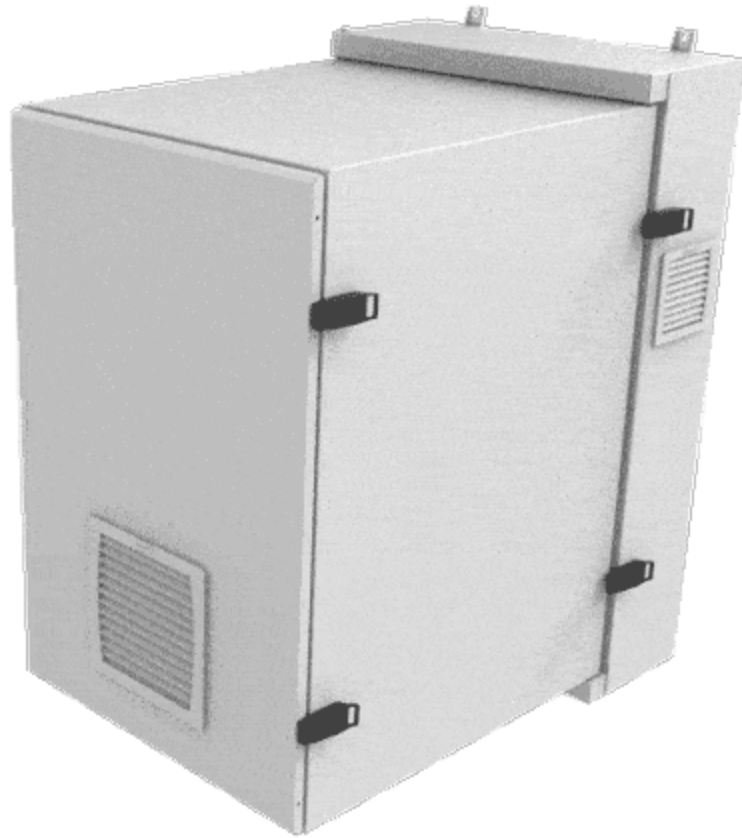
Galería





Accesorios

- Wall Rack Padlock Adapter
- Sliding Rack Shelf Steel 19 Inch (Up to 200 lb Capacity)
- Bonding and Grounding
- Rack Screws with Pilot Point
- Latch Replacement Kits
- 100-400 W Control Panel Heater
- Universal Rack Shelf Fixed Steel (Up to 200 lb Capacity)
- RMU Label Kit (Set of 2)
- Liquid-Tight Cordgrips (Nylon)
- Power Distribution Units (PDUs)
- Heavy Duty Cooling Fan Kits



"F" = Type 12 Filters Included

RAL 7035 Light Gray		RAL 9005 Black		Overall Dimensions			Rack Units	Mounting (Usable) Dimensions	
Solid Door Part No.	Window Door Part No.	Solid Door Part No.	Window Door Part No.	Height	Width	Depth		Height	Depth
NWC12U2436 SFLG	NWC12U2436 WFLG	NWC12U2436 SFBK	NWC12U2436 WFBK	31.77	24.50	36.22	12U	22.00	30.00
NWC18U2436 SFLG	NWC18U2436 WFLG	NWC18U2436 SFBK	NWC18U2436 WFBK	42.27	24.50	36.22	18U	32.00	30.00
NWC27U2436 SFLG	NWC27U2436 WFLG	NWC27U2436 SFBK	NWC27U2436 WFBK	58.02	24.50	36.22	27U	48.00	30.00

"A" = Air Conditioner Included

RAL 7035 Light Gray		RAL 9005 Black		Overall Dimensions			Rack Units	Mounting (Usable) Dimensions	
Solid Door Part No.	Window Door Part No.	Solid Door Part No.	Window Door Part No.	Height	Width	Depth		Height	Depth
NWC12U2436 SALG	NWC12U2436 WALG	NWC12U2436 SABK	NWC12U2436 WABK	31.77	24.50	36.22	12U	22.00	30.00
NWC18U2436 SALG	NWC18U2436 WALG	NWC18U2436 SABK	NWC18U2436 WABK	42.27	24.50	36.22	18U	32.00	30.00
NWC27U2436 SALG	NWC27U2436 WALG	NWC27U2436 SABK	NWC27U2436 WABK	58.02	24.50	36.22	27U	48.00	30.00

"N" = No Climate Control Included

RAL 7035 Light Gray		RAL 9005 Black		Overall Dimensions			Rack	Mounting (Usable) Dimensions	
Solid Door	Window Door	Solid Door	Window Door	Height	Width	Depth	Units	Height	Depth
Part No.	Part No.	Part No.	Part No.						
NWC12U2436 SNLG	NWC12U2436 WNLG	NWC12U2436 SNBK	NWC12U2436 WNBK	31.77	24.50	36.22	12U	22.00	30.00
NWC18U2436 SNLG	NWC18U2436 WNLG	NWC18U2436 SNBK	NWC18U2436 WNBK	42.27	24.50	36.22	18U	32.00	30.00
NWC27U2436 SNLG	NWC27U2436 WNLG	NWC27U2436 SNBK	NWC27U2436 WNBK	58.02	24.50	36.22	27U	48.00	30.00

No cutouts of any kind included. This is a solid enclosure.

Fan Options for "F" Versions

Part No.	Airflow Direction	Thermostat	VAC	Fan Size	Unimpeded CFM	Noise (dB)	Plug Type	Cord Length
DNFK1AC120	Intake or Exhaust	No	115	4.70	105	56	NEMA 5-15P	72.00
DTFK1AC120E	Exhaust Fan	Yes	115	4.70	105	56	NEMA 5-15P	72.00
DTFK1AC150	Intake Fan	Yes	115	6.00	230	70	NEMA 5-15P	72.00

Optional Inner Panel

Part No.	Part No.	Cabinet Rack Units	Height	Overall Dimensions Width	Depth
Steel RAL9003 White	Aluminum Unfinished				
WRPS12UWH	WRPS12UNF	12U	16.63	16.19	0.50
WRPS18UWH	WRPS18UNF	18U	27.13	16.19	0.50
WRPS27UWH	WRPS27UNF	27U	42.88	16.19	0.50

Tags: **ClimateCab, Intermediate Distribution Frame (IDF)**

Datos sujetos a cambios sin previo aviso.

© 2026. Hammond Manufacturing Ltd. Todos los derechos reservados.