

Swing Out Rack Frame for Eclipse Enclosures *ESF Serie*

Swing-out rack frame designed for Eclipse enclosures, providing 19" rack mounting with easy equipment access.

Key Features and Benefits



- Steel construction supports up to 62 lb, providing reliable mounting for rack equipment inside Eclipse enclosures.
- Provides standard 19 in rack mounting with EIA spacing and round hole rails for use with clip nuts, enabling flexible installation of IT, network, and control equipment (**CLPKIT1032-25** sold separately).
- Swing-out frame opens to 90 degrees, providing full rear access for installation, wiring, and maintenance.
- Can be hinged from either side, offering flexible installation based on enclosure layout and access requirements.
- Includes depth adjustment brackets to position equipment within the enclosure.
- Slotted quarter-turn latches secure the frame, with optional locking latch **EQTRL** available for added security.
- Designed specifically for Eclipse enclosure series, ensuring proper fit and integration.
- Maintains UL, CSA, and NEMA ratings when properly installed with hardware kit, preserving enclosure integrity.
- Manufactured in North America, ensuring consistent quality and production standards.
- TAA-compliant, manufactured in North America within an ISO 9001 certified facility.
- Black powder coat finish (GREENGUARD, TSCA, RoHS compliant) supports environmental and durability requirements.
- (Note: Not compatible with **DSTOPK** door stop kit.)

The ESF Series swing-out rack frames provide a flexible solution for integrating 19-inch rack equipment into Hammond Eclipse enclosures. Designed with a hinged frame, they allow mounted equipment to swing out for easy rear access, simplifying installation, maintenance, and cable management.

With adjustable depth and dual-hinge capability, the ESF Series supports a wide range of equipment layouts while maintaining enclosure ratings when properly installed. Manufactured in North America, these frames provide a reliable solution for industrial, automation, and hybrid IT/OT applications.

Where the ESF Series Works Best

- Industrial control systems
- Automation and electrical enclosures
- Network equipment inside NEMA environments
- Compact or mid-size enclosure installations
- Hybrid IT/OT deployments

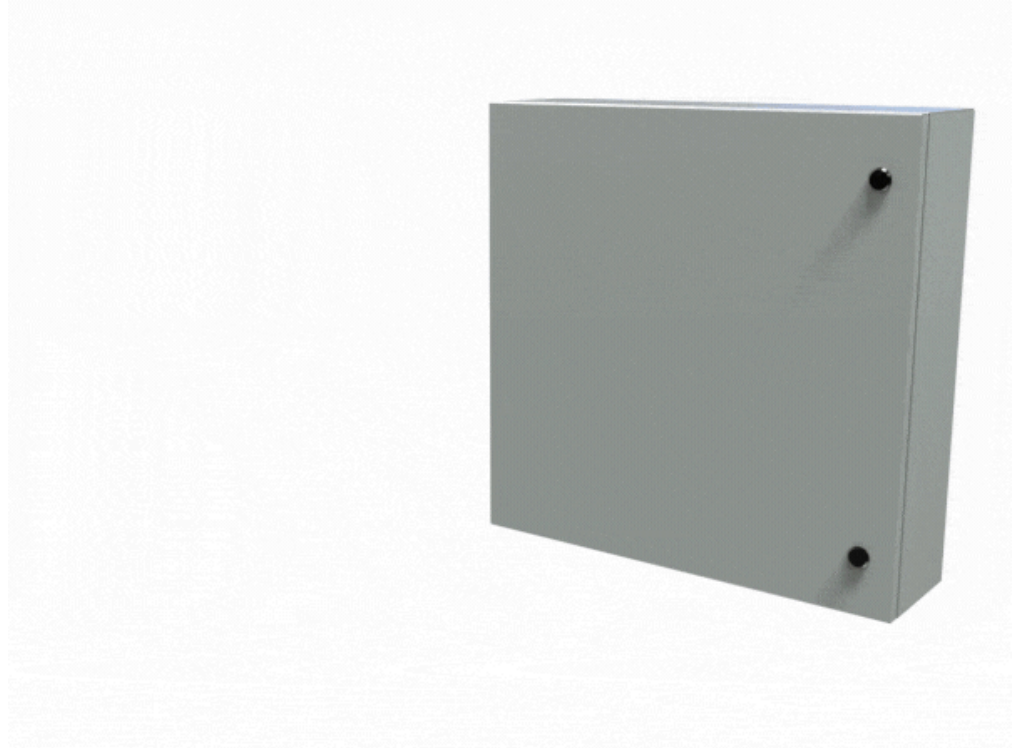
Best Applications for the ESF Series

- Mounting rack equipment inside Eclipse enclosures
- Providing rear access for wiring and servicing
- Integrating network and control equipment in industrial environments

- Supporting adjustable-depth equipment installations
- Improving serviceability in enclosed systems

Accesorios

- Mounting Screw and Clip Nut Combo-Pack
- Mounting Hardware



| Part No. | Fits Enclosure Size (AxB) | Mounting Dimensions | | Rack Units |
|----------|------------------------------|---------------------|--------------|---------------|
| | | Width | Usable Depth | |
| ESF2424 | 24x24 | 19.00 | 5.90 | 11U |
| ESF3024 | 30x24 | 19.00 | 5.90 | 14U |
| ESF3624 | 36x24 | 19.00 | 5.90 | 17U |

Tags: swing out rack frame, enclosure swing frame, eclipse rack frame, industrial rack frame, pivot rack mount, enclosure rack mount frame, 19 inch rack frame *Datos sujetos a cambios sin previo aviso.*