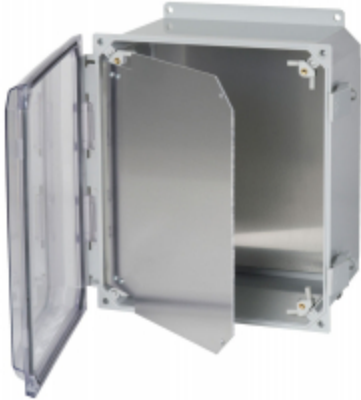


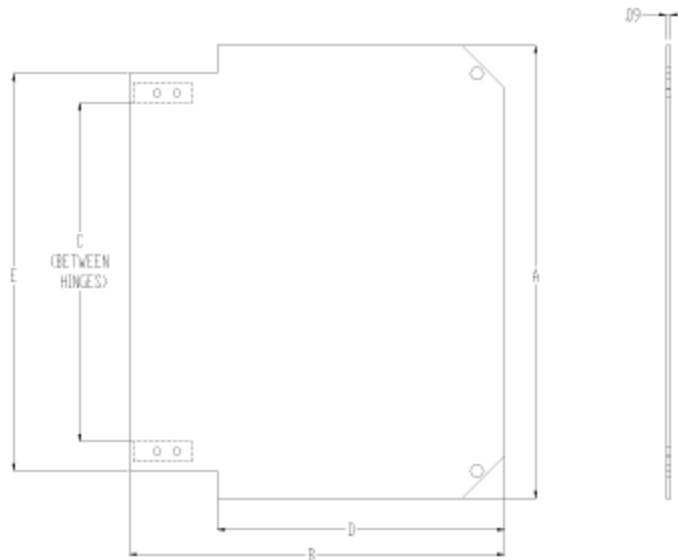
Swing Panel *PCJSP Serie*

PCJ Series Accessory



Features

- For use with PCJ series enclosures
- Hinged aluminum panel installed on corner sliders allowing adjustable depth setting
- Can be installed hinged either right or left swing
- Field installed with no drilling required
- Mounting hardware included
- Material thickness 0.09"



HFPP Kit Part No.	Enclosure Base Part No.	A	B	C	D	E
PCJHFPP66	PCJ664	5.44	5.61	2.64	3.13	4.19
PCJHFPP86	PCJ864	7.44	5.61	4.64	3.13	6.19
PCJHFPP88	PCJ884	7.44	7.63	4.64	5.38	6.19
PCJHFPP108	PCJ1084	9.43	7.69	6.63	5.38	8.18
PCJHFPP1210	PCJ12106	11.55	9.58	8.63	7.33	10.13
PCJHFPP1412	PCJ14126	13.10	11.25	10.61	9.00	11.75
PCJHFPP1614	PCJ16148	14.75	12.88	12.33	12.88	13.44
PCJHFPP1816	PCJ181610	16.88	14.88	14.19	14.88	15.44

Replacement Hardware

Part Number	Description
PCJCB4	Corner block set of 4 (for 14"H enclosures and smaller)

Part Number	Description
PCJCB4L	Corner block set of 4 (for 16" & 18"H enclosures)
PCJHFH	Hinge and screws set of 2

Tags: **swing panel, PCJ, adjustable depth, hinged panel**

Datos sujetos a cambios sin previo aviso.

© 2026. Hammond Manufacturing Ltd. Todos los derechos reservados.