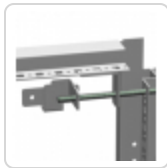
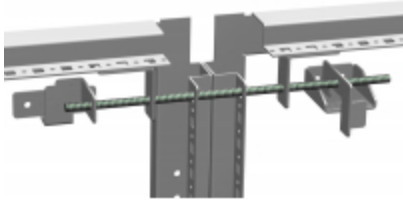


## Interlock Kit *HMEIK Serie*



- Main Interlock Kit- required for main/primary door in system
- Secondary Interlock Kit- required for each secondary door to be interlocked with main door
- Rod connector kit- required for connecting to secondary kit
- Clear zinc plated
- All kits maintain UL/CSA Type 12 approvals

Part Number	Description
HMIK	Main (Primary) Interlock Kit
HSIK	Secondary Interlock Kit
HSCRD	Rod Connector kit 600-1200 wide

Ordering Guide Common assemblies	Required
Single Door (Main/Primary Right or left) to Single door Cabinet	Main Interlock Kit
Single Door (Main/Primary right) to Double door Cabinet	Main Interlock Kit
Single Door (Main/Primary left) to Double door cabinet	Main Interlock Kit + Rod Connector Kit
Double Door (Main/Primary Right or Left) to Double door Cabinet	Main Interlock Kit + Rod Connector Kit
Any Additional cabinets to any of the above configurations	Secondary Interlock Kit + Rod Connector kit

Tags: HME, interlock kit, main kit, secondary kit, joining, connecting rod, ganging, cabinet, modular

*Datos sujetos a cambios sin previo aviso.*