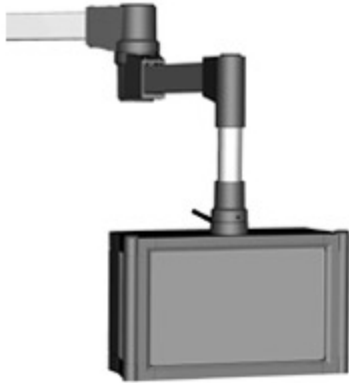


Tara Plus Suspension System *TPSS Serie*

NEMA 12, 13



Application

- Taraplus enclosure suspension systems are designed for light and medium loads.
- The strength of tube and cast fittings provide a highly flexible robust system.

Standards

- Complies with
 - IEC 60529 IP54

Construction

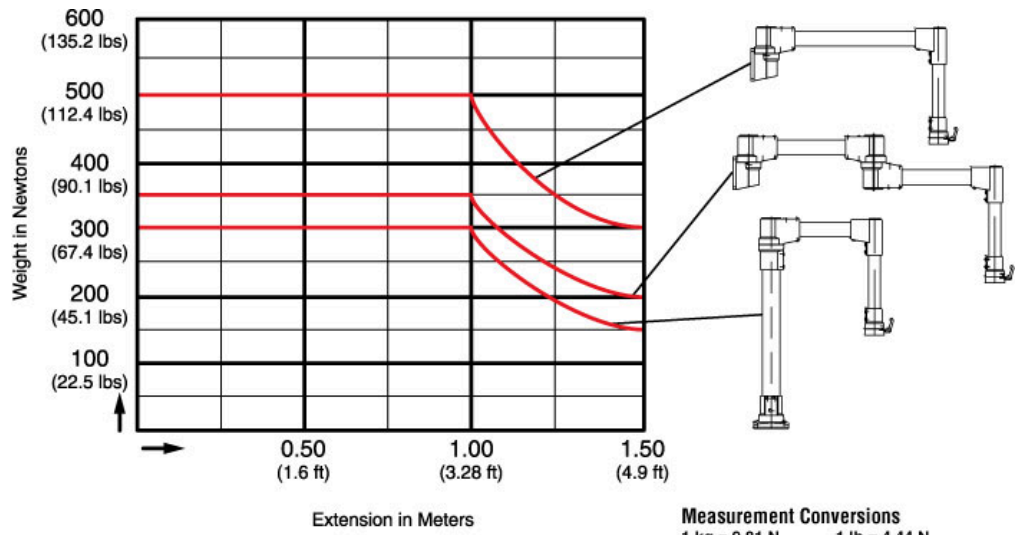
- Enclosure coupling and elbow coupling fittings are die-cast from G AL SI 12 aluminum.
- Suspension tubing is steel.

Finish

- Fittings are finished in RAL 7040 window gray.
- Suspension tubing is RAL 7035 light gray.

Accessorios

- Suspension Tube
- Tilt Coupling
- Tilt Elbow Coupling
- Fixed Elbow 70
- Base 48
- Rotating Base 70
- Wall Joint
- Intermediate Joint
- Tara Plus Coupling
- Elbow Coupling
- Fixed Elbow 48
- Rotating Elbow
- Base 70
- Socket Joint
- Vertical Wall Joint



Tags: taraplus, tara plus, suspension, operator, tube, fitting, light duty, medium duty

Datos sujetos a cambios sin previo aviso.

© 2026. Hammond Manufacturing Ltd. Todos los derechos reservados.