

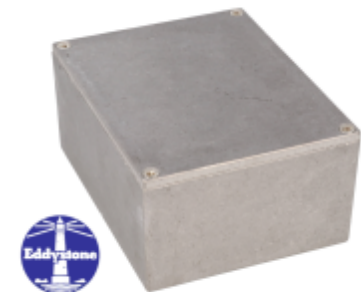


Productos de calidad. Excelencia en el servicio.

Eddystone Die-Cast Enclosures *EDDYSTONE Serie*

Key Features:

- Rugged diecast aluminium alloy electronic instrument enclosure.
- Diecast material is tough yet easy to machine.
- Aluminium alloy to BS1490, LM2M supplied in natural finish.
- Eddystone designed. The Eddystone brand was purchased by Hammond in 1998.
- Lap joint construction provides protection against access of dust and splashing water.
- Lids are retained by M3.5 x 12 countersunk screws (POZIDRIV No. 2 head).
- Countersunk lid holes.
- Designed to meet IP54.
- Low side wall draft angle (2° or less) for easy PC board mounting.



Enclosures

| Part Number | Length | Width | Total Depth | Lid Height |
|-------------|--------|-------|-------------|------------|
| 11451PSLA | 53 | 38 | 27 | 4 |
| 27969PSLA | 92 | 38 | 31 | 4 |
| 27134PSLA | 112 | 61 | 31 | 4 |
| 29830PSLA | 121 | 96 | 34 | 4 |
| 26908PSLA | 121 | 96 | 57 | 4 |
| 11130PSLA | 125 | 125 | 75 | 4 |
| 10758PSLA | 145 | 95 | 45 | 4 |
| 26827PSLA | 189 | 120 | 56 | 4 |
| 26357PSLA | 189 | 120 | 82 | 4 |

Tags: eddystone, diecast, stomp box, EMC, aluminum,

Datos sujetos a cambios sin previo avis

© 2026. Hammond Manufacturing Ltd. Todos los derechos reservados.