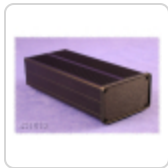
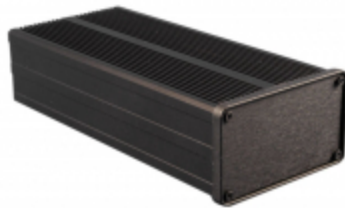


## Extruded Aluminum "Sink Box" *SINK-BOX Serie*

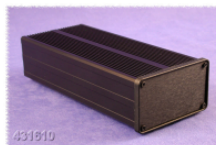


**Nota:** Esta línea de productos dejará de comercializarse en breve. Disponible hasta agotar existencias. Para obtener asistencia sobre soluciones alternativas, **contacte con Hammond aquí** o llame al EE.UU. (716) 630-7030, Canadá e Internacional (519) 822-2960.

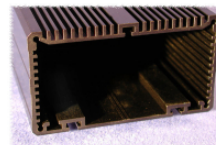
### Key Features:



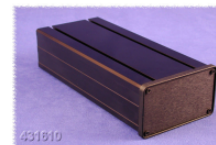
- The Sink Box series is a British designed extruded aluminum enclosure (originally sold under the West Hyde Enclosures Ltd. name).
- Ideally suited for mounting small printed circuit boards or chassis horizontally.
- The enclosure body is formed from a single, hollow aluminum extrusion. This gives the unit high strength as well as simplifying assembly.
- The aluminum extrusion has fins on one side (the top) which act as a heat sink. Aluminum end panels are attached to each end.
- Extrusions are anodized in a choice of either black or clear.
- The interior of the enclosure contains:
  - numerous slots on both of the shorter sides to accept a P.C. board or chassis.
  - three "T" slots (one in the top and two in the bottom) which provide an alternative method of mounting chassis or components that need to be cooled by conduction.
  - the single "T" slot in the top takes an M3 half-nut.
  - the two "T" slots in the bottom take M4 half-nuts.
- The exterior of the enclosure contains:
  - heat sink fins across the entire top.
  - two "T" slots on the bottom to allow mounting of wall brackets, belt attachment or to connect to another enclosure.
  - the two bottom "T" slots take M4 half-nuts.
- Also includes molded black plastic bezels which can be used to protect the end panels.
- End panel assembly screws are included.



Outside View



Inside View



Upside Down View

Part Number	Part Number	Designed For			
		P.C.B. Width	Length	Width	Height
431609		85mm	100.00	90.00	51.00
431612	531612	85mm	150.00	90.00	51.00
431610		85mm	200.00	90.00	51.00

