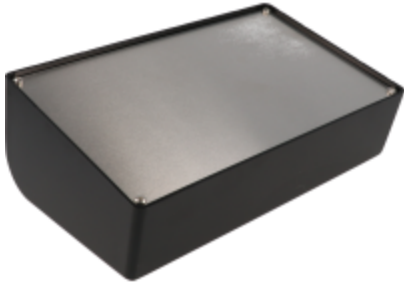


Plastic Console Enclosures *1595 Serie*

ABS Plastic Body w/ Aluminum Cover Plate

Features:



- Desktop electronic instrument enclosure ideally suited for mounting printed circuit boards.
- Molded from flame retardant ABS plastic which carries a UL flammability rating of 94V-0.
- Two piece construction. Integral card guides accept 1.5 mm (0.062") P.C. cards.
- 0.20" diameter stand off bosses in the base for supporting various subassemblies.
- Integral brass bushings with four M3 x 0.5" x 8 mm (0.31") Phillips pan head screws hold recessed panel into sloping front of case.
- 0.04" (1.01mm) thick aluminum panel with paper on one side.
- Four self-adhesive feet included.
- Stocked in black and grey.
- For replacement screws, order part number **1591MM100**.



Available in gray or black.

Includes plastic housing, aluminum plate, (4) adhesive feet, and (4) screws.

Part Numbers

Part Number	Color	Width (mm)	Length	Depth (Back of Console)
1595CBK	Black	161.00	96.00	58.00
1595CGY	Gray	161.00	96.00	58.00
1595EBK	Black	215.00	130.00	75.50
1595EGY	Gray	215.00	130.00	75.50

