



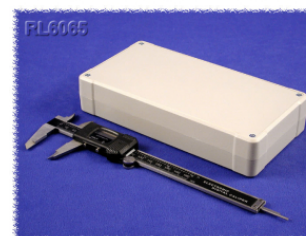
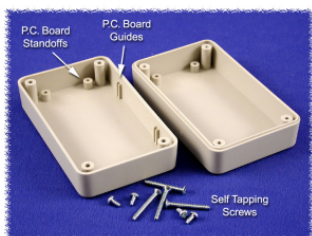
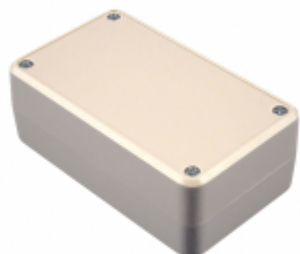
Productos de calidad. Excelencia en el servicio.

## ABS Plastic Project Enclosures *RL Series*

### Deep Lid

#### Key Features:

- Designed to house PC boards for handheld use.
- Molded in light grey or black general purpose ABS plastic which carries a UL flammability rating of UL94 HB.
- Two-part, snap action clam shell construction. Both halves include a smooth recessed area for membranes, keypads, labels, and more.
- PC board standoffs are molded into both top and bottom half of enclosure.
- Designed to meet IP54.
- Includes four M3 lid screws and four short M3 PC board screws.
- For replacement lid screws (quantity 50) order part number **SC617-50**.
- For replacement PC board screws (quantity 50) order part number **SC622-50**.



Click to enlarge features.

Bottom View

Top View

Part Number	Color	Length (mm)	Width (mm)	Height (mm)	Max PCB Length (mm)	Max PCB Width (mm)
RL6015BK	Black	107	64	40	99.81	56.81
RL6015	Grey	107	64	40	99.81	56.81
RL6035BK	Black	147	64	40	99.81	56.81
RL6035	Grey	147	64	40	99.81	56.81
RL6055BK	Black	180	106	40	170.98	96.58
RL6055	Grey	180	106	40	170.98	96.58
RL6065BK	Black	206	106	40	197.4	97.4
RL6065	Grey	206	106	40	197.4	97.4

Tags: deep lid, flanged, black, ABS, plastic, PCB, board, project box

Datos sujetos a cambios sin previo aviso

© 2026. Hammond Manufacturing Ltd. Todos los derechos reservados.