

Water-Tight ABS & Polycarbonate Enclosures *RP Series*

With Bottom Flange



Key Features

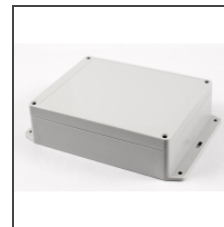
- Ideally suited for mounting printed circuit boards or components.
- Choice of two materials:
 - General purpose ABS with a flame rating of UL94-HB
 - Polycarbonate with a flame rating of UL94-V2
- Gasketed lid with two piece "tongue & groove" construction provides protection against access of oil, dust, and water.
- For version with no flanges, see **RP Series**.
- Rubber gasket is included and must be field installed.
- Lid includes smooth recessed area for membrane, label or silkscreen.
- Designed to meet IP65.
- Lid is secured with self capturing M3.5 stainless steel machine screws (included), threaded into corrosion resistant bushings (for repetitive assembly & disassembly).
- Lid screws are self capturing (lid holes are threaded with the first installation of lid screws).
- Internal features are maximized for mounting options:
 - Internal DIN rail mounting tabs
 - PC board mounting posts
 - Options vary with size, please refer to drawings by clicking on the part numbers below.
- Extra self-tapping M3.5-0.6 x 10mm lid screws: **SC619-50**
- Extra self-tapping M3 x 6mm PC Board screws: **SC622-50**



Opaque Lid (ABS version shown)



Clear Lid (polycarbonate version shown)



Shown with integral bottom flange.



Some models supplied with deep lids.



Hardware includes lid screws, PC board screws, and gasket



Features corrosion resistant inserts for lid assembly



Internal mounting points for PC boards or panels



Internal DIN rail mounting point.

RP Series With Bottom Flange

Light Gray ABS Plastic Opaque Lid w/ Bottom Flange	Light Gray ABS Plastic Clear Lid w/ Bottom Flange	Off White Polycarbonat e Opaque Lid w/ Bottom Flange	Off-White Polycarbonat e Clear Lid w/ Bottom Flange	Length (mm)	Width (mm)	Height (mm)	Optional Inner Panels		Replacement Gasket (2-pk)
							Plastic	Aluminum	
RP1025BF	RP1025BFC	RP1020BF	RP1020BFC	65	60	40	STC102	STA102	RP102GASKE T
RP1055BF	RP1055BFC	RP1050BF	RP1050BFC	85	80	40	STC106	STA106	RP106GASKE T
RP1065BF	RP1065BFC	RP1060BF	RP1060BFC	85	80	55	STC106	STA106	RP106GASKE T
RP1035BF	RP1035BFC	RP1030BF	RP1030BFC	95	50	40	STC104	STA104	RP103GASKE T
RP1045BF	RP1045BFC	RP1040BF	RP1040BFC	95	50	50	STC104	STA104	RP103GASKE T
RP1085BF	RP1085BFC	RP1080BF	RP1080BFC	105	75	40	STC109	STA109	RP108GASKE T
RP1095BF	RP1095BFC	RP1090BF	RP1090BFC	105	75	55	STC109	STA109	RP108GASKE T
RP1125BF	RP1125BFC	RP1120BF	RP1120BFC	125	85	40	STC113	STA113	RP113GASKE T
RP1135BF	RP1135BFC	RP1130BF	RP1130BFC	125	85	55	STC113	STA113	RP113GASKE T
RP1145BF	RP1145BFC	RP1140BF	RP1140BFC	125	85	70	STC113	STA113	RP113GASKE T
RP1155BF	RP1155BFC	RP1150BF	RP1150BFC	125	85	85	STC113	STA113	RP113GASKE T
RP1205BF	RP1205BFC	RP1200BF	RP1200BFC	145	105	40	STC121	STA121	RP120GASKE T
RP1215BF	RP1215BFC	RP1210BF	RP1210BFC	145	105	60	STC121	STA121	RP120GASKE T
RP1165BF	RP1165BFC	RP1160BF	RP1160BFC	165	85	40	STC117	STA117	RP117GASKE T
RP1195BF	RP1195BFC	RP1190BF	RP1190BFC	165	85	70	STC117	STA117	RP117GASKE T
RP1175BF	RP1175BFC	RP1170BF	RP1170BFC	165	85	55	STC117	STA117	RP117GASKE T
RP1185BF	RP1185BFC	RP1180BF	RP1180BFC	165	85	85	STC117	STA117	RP117GASKE T
RP1235BF	RP1235BFC	RP1230BF	RP1230BFC	165	125	55	STC124	STA124	RP124GASKE T
RP1245BF	RP1245BFC	RP1240BF	RP1240BFC	165	125	75	STC124	STA124	RP124GASKE T
RP1275BF	RP1275BFC	RP1270BF	RP1270BFC	186	146	55	STC128	STA128	RP128GASKE T
RP1285BF	RP1285BFC	RP1280BF	RP1280BFC	186	146	75	STC128	STA128	RP128GASKE T
RP1375BF	RP1375BFC	RP1370BF	RP1370BFC	186	146	90	STC128	STA128	RP128GASKE T
RP1385BF	RP1385BFC	RP1380BF	RP1380BFC	186	146	110	STC128	STA128	RP128GASKE T

50-Pack of PC Board screws

Part No.

SC622-50

50-pack of Replacement Lid Screws

Part No.

SC619-50

Tags: **plastic, project box, ABS, polycarbonate, watertight, inner panel, flanged, bottom flange, flanged lid** *Datos sujetos a cambios sin previo aviso.*

© 2026. Hammond Manufacturing Ltd. Todos los derechos reservados.