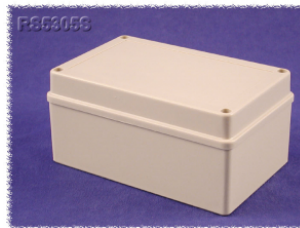


ABS Plastic Sealed Enclosures *RS Series*

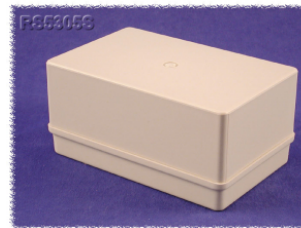
Key Features:



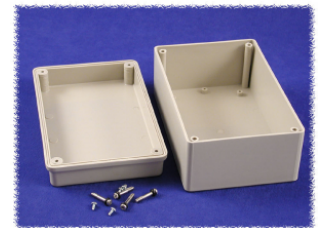
- Designed to house P.C. boards sealed from dust and water (not for outdoor use).
- Molded in light grey general purpose ABS plastic with a light texture (material carries a UL flammability rating of UL94 HB).
- Two-part styled lid construction. Top half includes smooth recessed area for membrane, label or silkscreen.
- P.C. board standoffs are molded into the bottom (two smallest sizes) and molded into both halves of the enclosure (two largest sizes). See photo tables for details. Four short M3 self tapping screws included.
- Gasketed lid with two piece "tongue & groove" construction provides protection against access of oil, dust and water.
- Designed to meet IP65.
- Includes four M4 assembly screws (see table below for type).
- Lid screws are self capturing (lid holes are threaded with the first installation of lid screws).



Assembled View (Top)



Assembled View (Bottom)



Open View

| Part Number | Color | Assembly Method | Lid Gasket | Length (mm) | Width (mm) | Height (mm) | Replacement | Replacement |
|-------------|-------|--|----------------|-------------|------------|-------------|-------------|-------------|
| | | | | | | | Gasket | Lid Screws |
| RS5105S | Grey | Self-Tapping Stainless Steel Screws | Installed | 108 | 108 | 54.5 | RS510GASKET | SC624-50 |
| RS5305S | Grey | Self-Tapping Stainless Steel Screws | Installed | 168 | 108 | 78.5 | RS530GASKET | SC624-50 |
| RS5705 | Grey | Stainless Steel Machine Screws Into Stainless Steel Inserts | Kit (Included) | 254 | 204 | 90 | RS570GASKET | SC618-50 |
| RS5805 | Grey | Stainless Steel Machine Screws Into Stainless Steel Inserts | Kit (Included) | 254 | 204 | 130 | RS570GASKET | SC618-50 |

Tags: **ABS, plastic, PCB, project box, deep lid**

Datos sujetos a cambios sin previo aviso.

© 2026. Hammond Manufacturing Ltd. Todos los derechos reservados.