

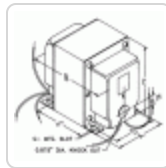
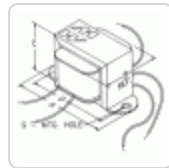
Audio Sound Distribution Line Matching *119 Serie*

Features



- Suitable for driving from solid state amplifiers where isolated windings are not required or can be used with our "Classic" 1600 tube output transformers to provide a 25V or 70V line output.
- 8 or 16 ohm input, 25V or 70V line output.
- Frequency response 50 Hz. to 10 Khz. at full ratings
- Leads 6" long minimum
- Can be reversed for operation at high power speaker locations.
- For speaker matching from older "Classic" 600 Ohm equipment - check out our **119DA** matching transformer.

Galería



Part No.	Max Output (Watts)	Line Output	Mounting Type	Mounting Centers					Mounting Hole Slot G			Wt. (lbs.)	Drawin g Figure	Overall Dimensions				
											A			B	C	D	E	
119Y30	30	70 & 25v	Bracket	3.56					0.19		2.40	1.00	4.03	2.25	2.63	3.56	-	
119Y60	60	70 & 25v	X Mtg.	2.00	x	2.19	0.20	x	0.38	3.30	2.00	2.50	3.25	3.06	2.00	2.19		
119Y100	100	70v only	X Mtg.	2.50	x	2.19	0.20	x	0.38	4.70	2.00	3.13	3.50	3.81	2.50	2.19		
119Y250	250	70v only	X Mtg.	2.50	x	2.94	0.20	x	0.38	6.70	2.00	3.13	4.25	3.81	2.50	2.94		

Tags: audio transformer, speaker, solid state, amplifier, output

Datos sujetos a cambios sin previo aviso.