



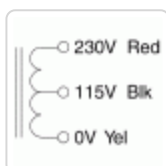
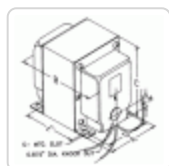
Productos de calidad. Excelencia en el servicio.

Hard Wired 170 Serie



Features

- Single winding, does not provide isolation, for use where equipment is already isolated and only voltage change is required.
- Flexible world wide applications, 50 or 60 Hz. operation, step down (230VAC to 115 VAC) or step up (115VAC to 230VAC).
- Connection by flexible leads, 8" minimum length.
- Models 170A, 170B, 170C & 170D are CSA certified (209651)
- Remember - These units do NOT convert line frequency



Part No.	Capacity		Overall Dimensions				Weight
	VA	A	B	C	D	E	Lbs
170	50	2.19	2.63	2.63	1.75	1.56	2
170A	100	2.50	3.00	3.10	2.00	1.90	3
170B	200	3.13	3.50	3.80	2.50	2.20	4.5
170C	300	3.13	4.00	3.80	2.50	2.70	6
170D	500	3.75	4.50	4.60	3.00	3.30	10
170E	750	3.75	5.50	4.60	3.00	4.30	14
170F	1000	3.75	5.50	4.60	3.00	4.30	14.5
170G	1500	4.38	6.60	5.30	3.50	5.10	22
170J	2000	4.38	7.50	5.30	3.50	5.91	23



Tags: autotransformer, line transformer, hard wired, single winding, voltage change, step down, step up *Datos sujetos a cambios sin previo aviso*

© 2026. Hammond Manufacturing Ltd. Todos los derechos reservados.