



HAMMOND  
MANUFACTURING™

***RITEC***  
*PLASTIC ENCLOSURES*

9C-R1

## Contents

|   |    |
|---|----|
| Instrument ABS Plastic Enclosures (RM Series) . . . . . | 3  |
| Project Enclosures (RL Series) . . . . .                | 4  |
| Hand-Held ABS Plastic (RL Series). . . . .              | 5  |
| ABS Plastic - Hand-Held (RH Series) . . . . .           | 6  |
| Watertight ABS Plastic (RP Series). . . . .             | 7  |
| Sealed - ABS Plastic (RS Series) . . . . .              | 8  |
| Watertight Polycarbonate (RP Series). . . . .           | 9  |
| Watertight - Deep Lid (RP Series). . . . .              | 10 |
| Additional Hammond Literature . . . . .                 | 11 |
| Factory Modified Enclosures . . . . .                   | 11 |
| Hammond on the Web. . . . .                             | 11 |

Hammond Manufacturing and RITEC Enclosures are pleased to announce a global cooperation for the manufacturing and sales of their wide range of diecast, plastic, and metal enclosures.

With inventory in America, Europe, and Asia, the RITEC range of quality products is available with high service levels.

For full technical and distribution information, please see [www.hammondmfg.com](http://www.hammondmfg.com) under the “More Enclosures” section. RITEC information is available as well at [www.ritec.com.tw](http://www.ritec.com.tw).

## Instrument ABS Plastic Enclosures (RM Series)

### Key Features:

- Designed to house P.C. boards - for instrument use.
- Molded in light grey - general purpose ABS plastic with a light texture (front & rear panels are smooth). Material carries a UL flammability rating of UL94 HB.
- Two part - clam shell construction. Bottom half includes molded in standoffs for easy P.C. board installation. Larger enclosures also include P.C. board standoffs on the top half. Four short M3 screws included
- Front & rear panels are interchangeable and easily removable for modifications.
- Tongue and groove construction provides protection against dust & water. Designed to meet IP43.
- Includes two (or four) - assembly screws (depending on size).
- All units except the RM2015S and RM2055S are secured with M3 Philips machine screws, threaded into integral brass bushings. Perfect for applications when repetitive assembly and disassembly are required. The RM2015S and RM2055S use self tapping Philips screws.
- Options include replacement IR translucent or aluminum panels.



| Part Number | Color | Units | Length | Width | Enclosure Depth (Assembled) |
|-------------|-------|-------|--------|-------|-----------------------------|
| RM2015S     | Grey  | inch  | 5.12   | 3.94  | 1.18                        |
|             |       | mm    | 130    | 100   | 30                          |
| RM2015M     | Grey  | inch  | 5.12   | 3.94  | 1.97                        |
|             |       | mm    | 130    | 100   | 50                          |
| RM2015L     | Grey  | inch  | 5.12   | 3.94  | 2.76                        |
|             |       | mm    | 130    | 100   | 70                          |
| RM2055S     | Grey  | inch  | 7.48   | 5.51  | 1.18                        |
|             |       | mm    | 190    | 140   | 30                          |
| RM2055M     | Grey  | inch  | 7.48   | 5.51  | 1.97                        |
|             |       | mm    | 190    | 140   | 50                          |
| RM2055L     | Grey  | inch  | 7.48   | 5.51  | 2.76                        |
|             |       | mm    | 190    | 140   | 70                          |
| RM2095S     | Grey  | inch  | 9.84   | 7.09  | 1.97                        |
|             |       | mm    | 250    | 180   | 50                          |
| RM2095M     | Grey  | inch  | 9.84   | 7.09  | 2.95                        |
|             |       | mm    | 250    | 180   | 75                          |
| RM2095L     | Grey  | inch  | 9.84   | 7.09  | 3.94                        |
|             |       | mm    | 250    | 180   | 100                         |

## Project Enclosures (RL Series)

### Key Features:

- Designed to house P.C. boards - for hand-held use or wall mount.
- Molded in light grey - general purpose ABS plastic with a light texture.
- Two part construction. Both halves include smooth recessed area for membrane, label or silkscreen (see chart below for recess size).
- P.C. board standoffs are molded into both halves of the enclosure.
- Designed to meet IP54.
- All sizes also available in a flanged lid version.
- Includes four - M3 assembly screws.



| Part Number | Part Number (With Flanged Lid) | Units      | Length      | Width       | Enclosure Depth (With Lid) | Lid Recess Size          | Bottom Recess Size       | P.C.B. Mounting Dimensions | Wall Mount Dimensions (Flanged Lid) |
|-------------|--------------------------------|------------|-------------|-------------|----------------------------|--------------------------|--------------------------|----------------------------|-------------------------------------|
| RL6105      | RL6105-F                       | inch<br>mm | 3.15<br>80  | 2.36<br>60  | 1.18<br>30                 | 2.13 x 2.05<br>54 x 52   | 2.13 x 2.05<br>54 x 52   | 2.52 x 1.18<br>64 x 30     | 3.62<br>92                          |
| RL6115      | RL6115-F                       | inch<br>mm | 3.15<br>80  | 2.36<br>60  | 1.57<br>40                 | 2.13 x 2.05<br>54 x 52   | 2.13 x 2.05<br>54 x 52   | 2.52 x 1.18<br>64 x 30     | 3.62<br>92                          |
| RL6215      | RL6215-F                       | inch<br>mm | 4.92<br>125 | 3.15<br>80  | 1.38<br>35                 | 3.78 x 2.76<br>96 x 70   | 3.78 x 2.76<br>96 x 70   | 4.21 x 1.57<br>107 x 40    | 5.39<br>137                         |
| RL6225      | RL6225-F                       | inch<br>mm | 4.92<br>125 | 3.15<br>80  | 1.97<br>50                 | 3.78 x 2.76<br>96 x 70   | 3.78 x 2.76<br>96 x 70   | 4.21 x 1.57<br>107 x 40    | 5.39<br>137                         |
| RL6335      | RL6335-F                       | inch<br>mm | 4.92<br>125 | 3.94<br>100 | 2.36<br>60                 | 3.78 x 3.46<br>96 x 88   | 3.78 x 3.46<br>96 x 88   | 4.17 x 2.56<br>106 x 65    | 5.39<br>137                         |
| RL6365      | RL6365-F                       | inch<br>mm | 4.92<br>125 | 3.94<br>100 | 3.54<br>90                 | 3.78 x 3.46<br>96 x 88   | 3.78 x 3.46<br>96 x 88   | 4.17 x 2.56<br>106 x 65    | 5.39<br>137                         |
| RL6435      | RL6435-F                       | inch<br>mm | 5.91<br>150 | 3.94<br>100 | 2.36<br>60                 | 4.72 x 3.54<br>120 x 90  | 4.72 x 3.54<br>120 x 90  | 5.20 x 2.36<br>132 x 60    | 6.38<br>162                         |
| RL6465      | RL6465-F                       | inch<br>mm | 5.91<br>150 | 3.94<br>100 | 3.54<br>90                 | 4.72 x 3.54<br>120 x 90  | 4.72 x 3.54<br>120 x 90  | 5.20 x 2.36<br>132 x 60    | 6.38<br>162                         |
| RL6555      | RL6555-F                       | inch<br>mm | 6.89<br>175 | 4.92<br>125 | 2.76<br>70                 | 5.59 x 4.53<br>142 x 115 | 5.59 x 4.53<br>140 x 112 | 6.06 x 2.76<br>154 x 70    | 7.36<br>187                         |
| RL6585      | RL6585-F                       | inch<br>mm | 6.89<br>175 | 4.92<br>125 | 3.94<br>100                | 5.59 x 4.53<br>142 x 115 | 5.59 x 4.41<br>140 x 112 | 6.06 x 2.76<br>154 x 70    | 7.36<br>187                         |
| RL6655      | RL6655-F                       | inch<br>mm | 7.87<br>200 | 5.91<br>150 | 2.76<br>70                 | 6.50 x 5.31<br>165 x 135 | 6.50 x 5.31<br>165 x 135 | 7.01 x 3.94<br>178 x 100   | 6.5<br>216                          |
| RL6685      | RL6685-F                       | inch<br>mm | 7.87<br>200 | 5.91<br>150 | 3.94<br>100                | 6.50 x 5.31<br>165 x 135 | 6.50 x 5.31<br>165 x 135 | 7.01 x 3.94<br>178 x 100   | 6.5<br>216                          |

Technical references and CAD downloads available at [www.hammondmfg.com](http://www.hammondmfg.com)

## Hand-Held ABS Plastic (RL Series)

### Key Features:

- Designed to house P.C. boards - for hand-held use.
- Molded in light grey - general purpose ABS plastic with a light texture (material carries a UL flammability rating of UL94 HB).
- Two part - snap action - clam shell construction. Both halves include smooth recessed area for membrane, label or silkscreen.
- P.C. board standoffs are molded into both halves of the enclosure. Four short M3 screws included.
- P.C. board guides molded into top half.
- Designed to meet IP54.
- Includes four - M3 assembly screws.

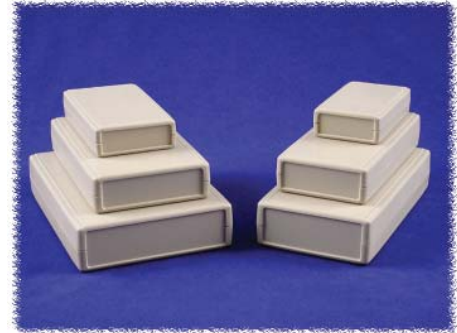


| Part Number | Color | Units             | Length      | Width       | Enclosure Depth (With Lid) |
|-------------|-------|-------------------|-------------|-------------|----------------------------|
| RL6015      | Grey  | inch<br><i>mm</i> | 4.09<br>104 | 2.56<br>65  | 1.57<br>40                 |
| RL6035      | Grey  | inch<br><i>mm</i> | 5.67<br>144 | 2.56<br>65  | 1.57<br>40                 |
| RL6055      | Grey  | inch<br><i>mm</i> | 7.01<br>178 | 4.13<br>105 | 1.57<br>40                 |
| RL6065      | Grey  | inch<br><i>mm</i> | 8.07<br>205 | 4.13<br>105 | 1.57<br>40                 |

## ABS Plastic - Hand-Held (RH Series)

### Key Features:

- Electronic instrument enclosures, ideally suited for mounting printed circuit boards.
- Ergonomically designed for a comfortable fit into the user's hand.
- Lap joint construction provides protection against dust accumulation and splashing water.
- Removeable front panel for easy modifications.
- Molded in a light grey general purpose ABS plastic with a light texture (material carries a UL flammability rating of UL94 HB).
- Assembled with M3 Philips machine screws, threaded into integral brass bushings. Perfect for applications when repetitive assembly and disassembly are required (except for the two smallest sizes). The RH3115 and the RH3135 use self tapping M2.6 screws.
- Both top and bottom halves contain P.C. board standoffs molded in.
- The two largest sizes (RH3185 & RH3195) include four self adhesive rubber feet for desk top use.



### Standard

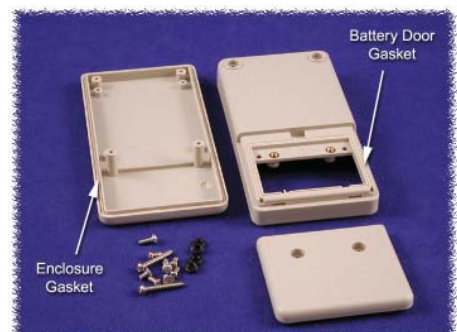
| Part Number | Units | Length | Width | Enclosure Depth<br>(assembled) |
|-------------|-------|--------|-------|--------------------------------|
| RH3115      | inch  | 3.94   | 2.36  | 0.98                           |
|             | mm    | 100    | 60    | 25                             |
| RH3135      | inch  | 4.72   | 2.76  | 0.98                           |
|             | mm    | 120    | 70    | 25                             |
| RH3155      | inch  | 6.5    | 3.15  | 1.26                           |
|             | mm    | 165    | 80    | 32                             |
| RH3165      | inch  | 6.5    | 3.94  | 1.26                           |
|             | mm    | 165    | 100   | 32                             |
| RH3185      | inch  | 7.28   | 5.31  | 1.57                           |
|             | mm    | 185    | 135   | 40                             |
| RH3195      | inch  | 7.48   | 3.94  | 1.57                           |
|             | mm    | 190    | 100   | 40                             |



### With Battery Door

| Part Number | Part Number with Gaskets | Color | Units | Length | Width | Enclosure Depth<br>(assembled) |
|-------------|--------------------------|-------|-------|--------|-------|--------------------------------|
| RH3015      | RH3005*                  | Grey  | inch  | 5.12   | 2.68  | 0.98                           |
|             |                          |       | mm    | 130    | 68    | 25                             |
| RH3055      | RH3045*                  | Grey  | inch  | 6.50   | 3.35  | 1.18                           |
|             |                          |       | mm    | 165    | 85    | 30                             |

\* Designed to meet IP 65



## Watertight ABS Plastic (RP Series)

### Key Features:

- Ideally suited for mounting printed circuit boards or DIN rail mounted components.
- Material - General purpose ABS plastic (material carries a UL flammability rating of UL94 HB).
- Color is a light gray with a light texture. Also available with a clear polycarbonate lid (see table below).
- Gasketed lid with two piece “tongue & groove” construction provides protection against access of oil, dust and water.
- Rubber gasket is included and must be field installed.
- Lid includes smooth recessed area for membrane, label or silkscreen (see chart below for recess size).
- Designed to meet IP 65.
- Lid is secured with self capturing - M3.5 stainless steel machine screws (included), threaded into integral stainless steel bushings (for repetitive assembly & disassembly). All stainless steel hardware to avoid corrosion caused by dissimilar metals.
- Lid screws are self capturing (lid holes are threaded with the first installation of lid screws).
- Internal features are maximized for mounting options:
  - Internal DIN rail mounting tabs - molded in.
  - Options vary with size.



| Part No. | Part No. ABS with Clear Lid | Units      | Length      | Width       | Height (Includes Lid) | Lid Recess Size         |
|----------|-----------------------------|------------|-------------|-------------|-----------------------|-------------------------|
| RP1025   | RP1025C                     | inch<br>mm | 2.56<br>65  | 2.36<br>60  | 1.57<br>40            | 1.54 x 2.05<br>39 x 52  |
| RP1065   | RP1065C                     | inch<br>mm | 3.35<br>85  | 3.15<br>80  | 2.17<br>55            | 2.32 x 2.83<br>59 x 72  |
| RP1085   | RP1085C                     | inch<br>mm | 4.13<br>105 | 2.95<br>75  | 1.57<br>40            | 2.56 x 3.07<br>65 x 78  |
| RP1095   | RP1095C                     | inch<br>mm | 4.13<br>105 | 2.95<br>75  | 2.17<br>55            | 2.56 x 3.07<br>65 x 78  |
| RP1135   | RP1135C                     | inch<br>mm | 4.92<br>125 | 3.35<br>85  | 2.17<br>55            | 3.03 x 3.90<br>77 x 99  |
| RP1205   | RP1205C                     | inch<br>mm | 5.71<br>145 | 4.13<br>105 | 1.77<br>45            | 4.57 x 3.78<br>116 x 96 |

| Part No. | Part No. ABS with Clear Lid | Units      | Length      | Width       | Height (Includes Lid) | Lid Recess Size          |
|----------|-----------------------------|------------|-------------|-------------|-----------------------|--------------------------|
| RP1215   | RP1215C                     | inch<br>mm | 5.71<br>145 | 4.13<br>105 | 2.56<br>65            | 4.57 x 3.78<br>116 x 96  |
| RP1175   | RP1175C                     | inch<br>mm | 6.5<br>165  | 3.35<br>85  | 2.17<br>55            | 2.76 x 5.47<br>70 x 139  |
| RP1245   | RP1245C                     | inch<br>mm | 6.5<br>165  | 4.92<br>125 | 2.95<br>75            | 5.43 x 4.57<br>138 x 116 |
| RP1285   | RP1285C                     | inch<br>mm | 7.32<br>186 | 5.75<br>146 | 2.95<br>75            | 5.08 x 5.91<br>129 x 150 |
| RP1455   | RP1455C                     | inch<br>mm | 8.66<br>220 | 6.5<br>165  | 2.36<br>60            | 7.28 x 5.91<br>185 x 150 |
| RP1465   | RP1465C                     | inch<br>mm | 8.66<br>220 | 6.5<br>165  | 3.35<br>85            | 7.28 x 5.91<br>185 x 150 |

## Sealed - ABS Plastic (RS Series)

### Key Features:

- Designed to house P.C. boards - sealed from dust and water (not for outdoor use).
- Molded in light grey - general purpose ABS plastic with a light texture (material carries a UL flammability rating of UL94 HB).
- Two part - styled lid construction. Top half includes smooth recessed area for membrane, label or silk-screen.
- P.C. board standoffs are molded into the bottom (two smallest sizes) and molded into both halves of the enclosure (two largest sizes). Four short M3 self tapping screws included.
- Gasketed lid with two piece “tongue & groove” construction provides protection against access of oil, dust and water.
- Designed to meet IP65.
- Includes four - M4 assembly screws (see table below for type).
- Lid screws are self captivating (lid holes are threaded with the first installation of lid screws).



| Part Number | Color | Assembly Method   | Lid Gasket        | Units             | Length      | Width       | Enclosure Depth (With Lid) |
|-------------|-------|---|-------------------|-------------------|-------------|-------------|----------------------------|
| RS5105S     | Grey  | Four - Self Tapping<br>Stainless Steel Screws                           | Installed         | inch<br><i>mm</i> | 4.13<br>105 | 4.13<br>105 | 2.17<br>55                 |
| RS5305S     | Grey  | Four - Self Tapping<br>Stainless Steel Screws                           | Installed         | inch<br><i>mm</i> | 6.5<br>165  | 4.13<br>105 | 3.07<br>78                 |
| RS5705      | Grey  | Four - Stainless Steel Machine Screws<br>(into Stainless Steel Inserts) | Kit<br>(Included) | inch<br><i>mm</i> | 9.84<br>250 | 7.87<br>200 | 3.54<br>90                 |
| RS5805      | Grey  | Four - Stainless Steel Machine Screws<br>(into Stainless Steel Inserts) | Kit<br>(Included) | inch<br><i>mm</i> | 9.84<br>250 | 7.87<br>200 | 5.12<br>130                |



## Watertight Polycarbonate (RP Series)

### Key Features:

- Ideally suited for mounting printed circuit boards or DIN rail mounted components.
- Material - Polycarbonate (material carries a UL flammability rating of UL94 HB).
- Color is an off white with a light texture.
- Gasketed lid with two piece “tongue & groove” construction provides protection against access of oil, dust and water.
- Rubber gasket is included and must be field installed.
- Lid includes smooth recessed area for membrane, label or silkscreen (see chart below for recess size).
- Designed to meet IP 65.
- Lid is secured with self captivating - M3.5 stainless steel machine screws (included), threaded into integral stainless steel bushings (for repetitive assembly & disassembly). All stainless steel hardware to avoid corrosion caused by dissimilar metals.
- Lid screws are self captivating (lid holes are threaded with the first installation of lid screws).
- Internal features are maximized for mounting options:
  - Internal DIN rail mounting tabs - molded in.
  - Options vary with size.



| Part No. | Units | Length | Width | Height<br>(Includes<br>Lid) | Lid<br>Recess Size |
|----------|-------|--------|-------|-----------------------------|--------------------|
| RP1020   | inch  | 2.56   | 2.36  | 1.57                        | 1.54 x 2.05        |
|          | mm    | 65     | 60    | 40                          | 39 x 52            |
| RP1060   | inch  | 3.35   | 3.15  | 2.17                        | 2.32 x 2.83        |
|          | mm    | 85     | 80    | 55                          | 59 x 72            |
| RP1080   | inch  | 4.13   | 2.95  | 1.57                        | 2.56 x 3.07        |
|          | mm    | 105    | 75    | 40                          | 65 x 78            |
| RP1090   | inch  | 4.13   | 2.95  | 2.17                        | 2.56 x 3.07        |
|          | mm    | 105    | 75    | 55                          | 65 x 78            |
| RP1130   | inch  | 4.92   | 3.35  | 2.17                        | 3.03 x 3.90        |
|          | mm    | 125    | 85    | 55                          | 77 x 99            |
| RP1200   | inch  | 5.71   | 4.13  | 1.77                        | 4.57 x 3.78        |
|          | mm    | 145    | 105   | 45                          | 116 x 96           |
| RP1210   | inch  | 5.71   | 4.13  | 2.56                        | 4.57 x 3.78        |
|          | mm    | 145    | 105   | 65                          | 116 x 96           |
| RP1170   | inch  | 6.5    | 3.35  | 2.17                        | 2.76 x 5.47        |
|          | mm    | 165    | 85    | 55                          | 70 x 139           |
| RP1240   | inch  | 6.5    | 4.92  | 2.95                        | 5.43 x 4.57        |
|          | mm    | 165    | 125   | 75                          | 138 x 116          |
| RP1280   | inch  | 7.32   | 5.75  | 2.95                        | 5.08 x 5.91        |
|          | mm    | 186    | 146   | 75                          | 129 x 150          |
| RP1450   | inch  | 8.66   | 6.5   | 2.36                        | 7.28 x 5.91        |
|          | mm    | 220    | 165   | 60                          | 185 x 150          |
| RP1460   | inch  | 8.66   | 6.5   | 3.35                        | 7.28 x 5.91        |
|          | mm    | 220    | 165   | 85                          | 185 x 150          |

## Watertight - Deep Lid (RP Series)

### Key Features:

- Ideally suited for mounting printed circuit boards or DIN rail mounted components requiring a deep enclosure.
- Choice of two materials - General purpose ABS plastic or Polycarbonate (both materials carry a UL flammability rating of UL94 HB).
- ABS Plastic color is a light gray with a light texture. Also available with a clear polycarbonate lid (see table below).
- Polycarbonate version is available in an off white with a light texture.
- Gasketed lid with two piece “tongue & groove” construction provides protection against access of oil, dust and water.
- Rubber gasket is included and must be field installed.
- Lid includes smooth recessed area for membrane, label or silkscreen (see chart below for recess size).
- Designed to meet IP 65.
- Lid is secured with self capturing - M3.5 stainless steel machine screws (included), threaded into integral stainless steel bushings (for repetitive assembly & disassembly). All stainless steel hardware to avoid corrosion caused by dissimilar metals.
- Lid screws are self capturing (lid holes are threaded with the first installation of lid screws).
- Internal features are maximized for mounting options:
  - Internal DIN rail mounting tabs - molded in.
  - Options vary with size.

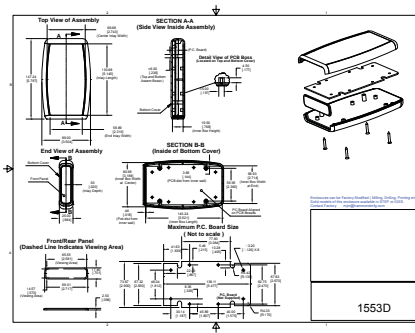
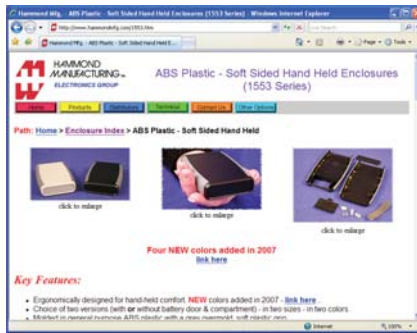


| Part No. ABS | Part No. Polycarb | Part No. ABS with Clear Lid | Units             | Length      | Width       | Height (Includes Lid) | Lid Recess Size          |
|--------------|-------------------|-----------------------------|-------------------|-------------|-------------|-----------------------|--------------------------|
| RP1155       | RP1150            | RP1155C                     | inch<br><i>mm</i> | 4.92<br>125 | 3.35<br>85  | 3.35<br>85            | 2.76 x 3.66<br>70 x 93   |
| RP1185       | RP1180            | RP1185C                     | inch<br><i>mm</i> | 6.5<br>165  | 3.35<br>85  | 3.35<br>85            | 2.76 x 5.28<br>70 x 134  |
| RP1385       | RP1380            | RP1385C                     | inch<br><i>mm</i> | 7.32<br>186 | 5.75<br>146 | 4.33<br>110           | 4.92 x 5.79<br>125 x 147 |

## Hammond on the Web

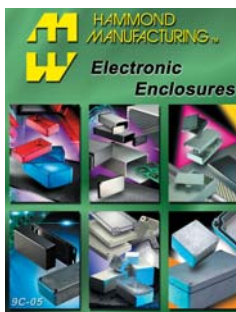
For detailed drawings, CAD files and color photos visit Hammond's website at:

[www.hammondmfg.com](http://www.hammondmfg.com)



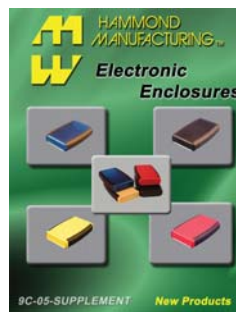
## Additional Hammond Literature

Catalog 9C-05



Electronic Enclosures

Catalog 9C-05SUP



Electronic Enclosures  
Supplement

Brochure RM-1457



RM Series  
1457 Series

Contact one of our offices on the back to order one today!

## Factory Modified Enclosures



- *Machining*
- *Silk Screening*
- *Hot Stamping*
- *Special Colors*
- *Custom Materials*

### Easy to quote and order

- Mark up our PDF drawings downloadable from our website
- Modify our AutoCad files downloadable from our website
- Email us at [modifieds@hammondmfg.com](mailto:modifieds@hammondmfg.com)

Technical references and CAD downloads available at [www.hammondmfg.com](http://www.hammondmfg.com)



# HAMMOND MANUFACTURING™

## CANADA

Hammond Mfg. Co. Ltd.  
394 Edinburgh Road North  
Guelph, Ontario N1H 1E5  
Tel: (519) 822-2960  
or (905) 456-3770  
Fax: (519) 822-0715

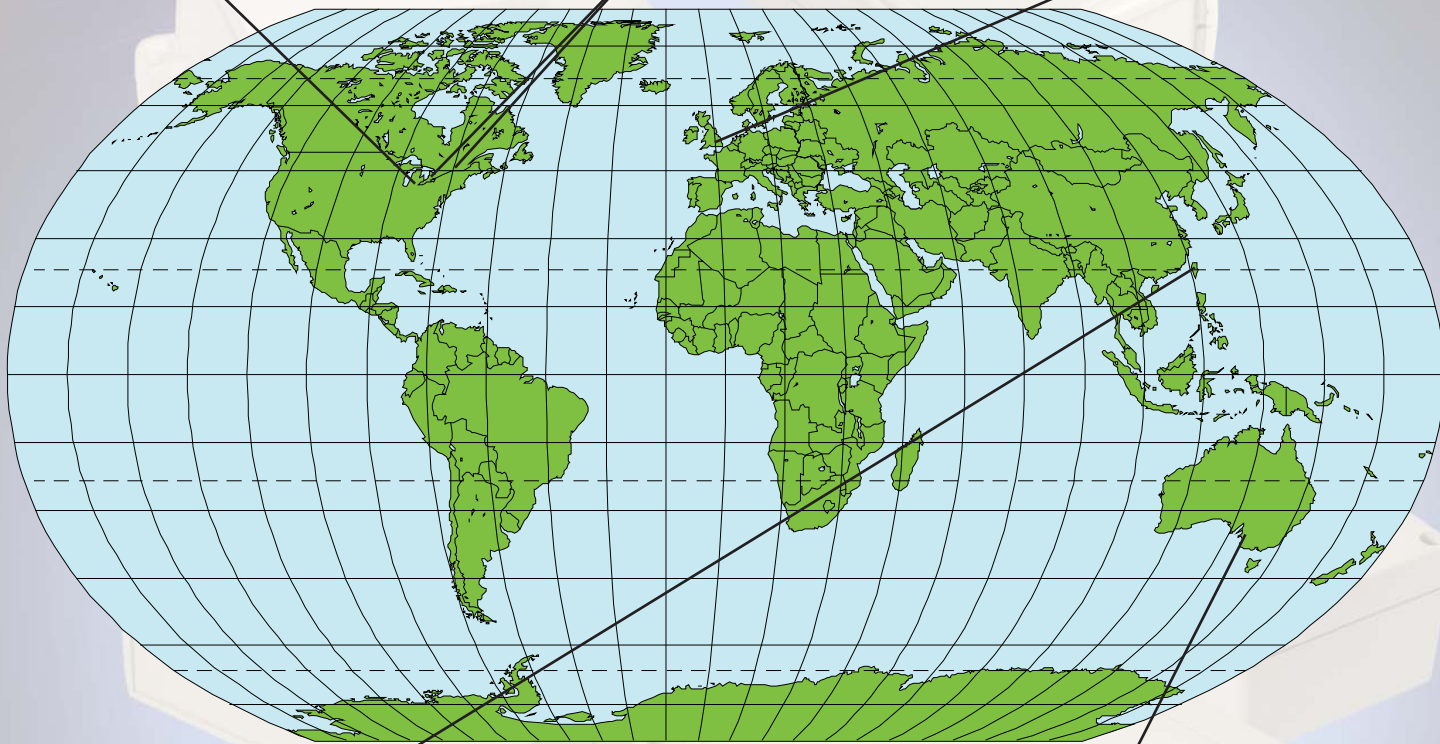
## USA

Hammond Mfg. Co. Inc.  
475 Cayuga Road  
Cheektowaga, NY 14225  
Tel: (716) 630-7030  
Fax: (716) 630-7042

Les Fabrications Hammond  
(Quebec) Inc.  
4240 Seré Street  
St. Laurent, Quebec H4T 1A6  
Tel: (514) 343-9010  
Fax: (514) 343-9941

## Europe

Hammond Electronics Limited  
1 Onslow Close  
Kingsland Business Park  
Basingstoke, Hampshire  
RG24 8QL  
United Kingdom  
Tel: 01256 812812  
Fax: 01256 332249



## Asia

RITEC Enclosures Inc.  
10F., No. 81, Sec. 1, Kuang Fu Road  
San Chung City, Taipei 241  
Taiwan  
Tel: +886 - 2 - 2999 8918  
Fax: +886 - 2 - 2999 8955

## Australia

Hammond Electronics Pty. Ltd.  
ABN 13 099 121 981  
11-13 Port Road  
Queenstown, SA 5014  
Australia  
Tel: 61-8-8240-2244  
Fax: 61-8-8240-2255

[www.hammondmfg.com](http://www.hammondmfg.com)