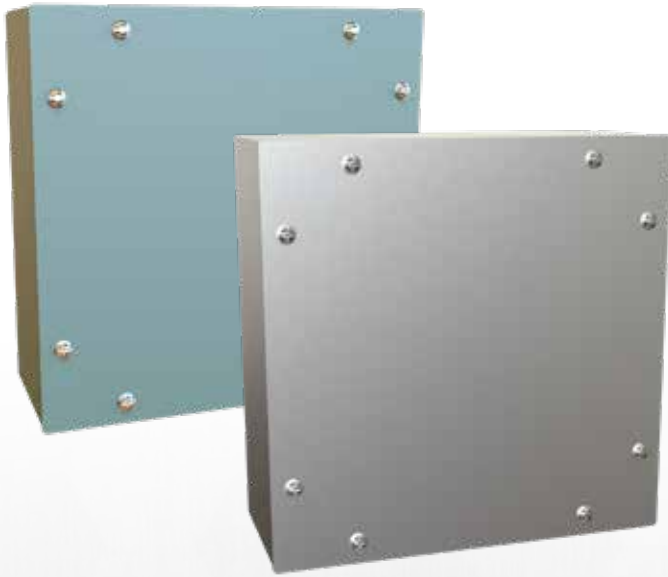




Heavy Duty Screw Cover Junction Boxes

Type 3/12/4 Painted & Type 4X Stainless Steel



Key Product Features

- More durable junction box solutions for industrial or outdoor applications
- Offered in two materials - ANSI 61 Gray, painted steel and brushed 304 stainless steel (for enhanced corrosion resistance)
- Flat cover held in place with stainless steel screws
- Body has fully welded seams with no knockouts or holes
- Seamless poured-in-place gasket

Painted Steel Part #	304 Stainless Steel Part #	H	W	D
C3SC664GY	C4XSC664SS	6	6	4
C3SC864GY	C4XSC864SS	8	6	4
C3SC884GY	C4XSC884SS	8	8	4
C3SC1084GY	C4XSC1084SS	10	8	4
C3SC10104GY	C4XSC10104SS	10	10	4
C3SC12124GY	C4XSC12124SS	12	12	4
C3SC666GY	C4XSC666SS	6	6	6
C3SC886GY	C4XSC886SS	8	8	6
C3SC10106GY	C4XSC10106SS	10	10	6
C3SC12106GY	n/a	12	10	6
C3SC12126GY	C4XSC12126SS	12	12	6
C3SC16126GY	n/a	16	12	6
C3SC16166GY	C4XSC16166SS	16	16	6
C3SC18186GY	C4XSC18186SS	18	18	6
C3SC24246GY	C4XSC24246SS	24	24	6

Painted Steel Part #	304 Stainless Steel Part #	H	W	D
C3SC888GY	n/a	8	8	8
C3SC12128GY	C4XSC12128SS	12	12	8
C3SC16168GY	C4XSC16168SS	16	16	8
C3SC20208GY	n/a	20	20	8
C3SC24208GY	n/a	24	20	8
C3SC24248GY	C4XSC24248SS	24	24	8
C3SC242410GY	C4XSC242410SS	24	24	10
C3SC242412GY	C4XSC242412SS	24	24	12
C3SC303012GY	C4XSC303012SS	30	30	12
C3SC363612GY	C4XSC363612SS	36	36	12

For full technical details and drawings, visit
the Hammond Manufacturing website:

Type 3/12/4 Painted Steel: www.hammondmfg.com/C3SC
Type 4X Stainless Steel: www.hammondmfg.com/C4XSC

For any inquiries regarding electrical enclosures,
contact your Hammond Representative!
USA (716) 630-7030 • CANADA (519) 822-2960

Quality Products. Service Excellence.



Visit: hammondmfg.com

...A library of enclosure specification tools available instantly.

Our comprehensive, user friendly website, details our extensive offering - providing an exceptional tool to gather product information. Our website is mobile friendly and kept up to date with our newest products, to ensure you have the most accurate information. Be sure to visit hammondmfg.com regularly, as it's being continually enhanced to add more useful functionality, and always features our newest product releases.



Broad Product Selection

...Product solutions for virtually any application, at your fingertips

- Stock Industrial Type 12, 4, and 4X enclosures
- UL and CSA product approvals
- Various construction materials - painted mild steel, 304 stainless steel, 316 stainless steel, aluminum, galvanized steel, polycarbonate and fiberglass reinforced polyester
- Sizes ranging from the smallest junction box to the largest multi-door freestanding enclosure

Our Website Features Include:

- CAD drawings available in DXF/STEP/ PDF Formats
- Accessories links
- Similar product and materials suggestions
- Alternate material suggestions
- Product Bulletins
- Advance search for enclosures by size & type
- Multi-competitor cross reference
- Climate Control Sizing Software
- Complete listing of North American distributors
- Online literature downloads and request forms
- Current price lists in Excel format
- Real time in-stock availability and pricing through our Partner Portal (authorized distributors)



For any inquiries regarding electrical enclosures,
contact your Hammond Representative!
USA (716) 630-7030 • CANADA (519) 822-2960