



HAMMOND
MANUFACTURING™

***Hammond Electronics
Asia Inc.***

October 2011

Diecast Aluminum Enclosures	
1590 Series	3
Diecast Aluminum Enclosures	
1550 Series	4
Heavy Duty Watertight Die Cast Enclosures	
1550Z Series	5
Painted Diecast Aluminum Enclosures	
1590 “Stomp” Series.....	6
Diecast Aluminum with P.C. Board Mounting Ribs	
1590 “Ribbed” Series.....	7
Hand Held Instrument - ABS	
1593 Series	8
Miniature General Purpose - ABS	
1551 Series	9
Soft Sided Hand Held - ABS	
1553 Series	10
Soft Sided Hand Held - Colored ABS	
1553 Series	11
Project Enclosures	
RL Series.....	12
Hand-Held ABS Plastic	
RL Series.....	13
ABS Plastic - Hand-Held	
RH Series	14
Watertight ABS Plastic	
RP Series	15
Sealed - ABS Plastic	
RS Series	16
Watertight Polycarbonate	
RP Series	17
Watertight - Deep Lid	
RP Series	18
Instrument ABS Plastic Enclosures	
RM Series.....	19

Diecast Aluminum Enclosures

1590 Series

Features

- Rugged, diecast aluminum alloy (tough - yet easy to machine), electronic instrument enclosure.
- Lap joint construction provides protection against access of dust and splashing water. Also provides for improved EMI/RFI shielding.
- Unpainted version is vibra finished for a smooth surface with no sharp edges.
- Four (or 6 in 1590D, 1590DD & 1590E) 6-32 x 1/2" machine screws secure lid - into factory tapped holes.
- Designed to meet IP54.
- Low side wall draft angle (2 degrees or less) for easy P.C. board mounting.



Part No.	Units	Overall Dimensions			
		Length	Width	Depth (With Lid)	Depth of Lid
1590LLB	inch	1.97	1.97	0.99	0.16
	mm	50	50	71	4.00
1590LB	inch	1.99	1.99	1.22	0.16
	mm	51.00	51.00	31.00	4.00
1590A	inch	3.64	1.52	1.22	0.16
	mm	93.00	39.00	31.00	4.00
1590G	inch	3.94	1.97	0.99	0.16
	mm	100	50	71	4.00
1590B	inch	4.39	2.34	1.22	0.16
	mm	112.00	60.00	31.00	4.00
1590BB	inch	4.67	3.68	1.34	0.16
	mm	119.00	94.00	34.00	4.00
1590C	inch	4.72	3.70	2.26	0.16
	mm	120.00	94.00	57.00	4.00
1590Q	inch	4.70	4.70	1.26	0.16
	mm	120	120	32	4.00
1590U	inch	4.70	4.70	2.33	0.16
	mm	120	120	59	4.00
1590V	inch	4.70	4.70	3.70	0.16
	mm	120	120	94	4.00
1590XX	inch	5.72	4.77	1.55	0.16
	mm	145.00	121.00	38.00	4.00

Part No.	Units	Overall Dimensions			
		Length	Width	Depth (With Lid)	Depth of Lid
1590X	inch	5.72	4.77	2.22	0.16
	mm	145.00	121.00	56.00	4.00
1590P1	inch	6.01	3.24	1.97	0.16
	mm	153	82	50	4.00
1590DD	inch	7.38	4.70	1.46	0.16
	mm	188.00	119.50	37.00	4.00
1590D	inch	7.38	4.70	2.21	0.16
	mm	188.00	120.00	56.00	4.00
1590E	inch	7.38	4.70	3.23	0.16
	mm	188.00	120.00	82.00	4.00
1590CE	inch	4.74	3.95	2.53	0.16
	mm	120	100	64	4.00
1590N1	inch	4.77	2.60	1.55	0.16
	mm	121	66	39	4.00
1590R1	inch	7.55	4.38	2.40	0.16
	mm	192	111	61	4.00
1590DE	inch	7.88	4.73	2.53	0.16
	mm	200	120	64	4.00
1590EE	inch	7.88	4.73	3.33	0.16
	mm	200	120	84	4.00

Diecast Aluminum Enclosures

1550 Series

Features

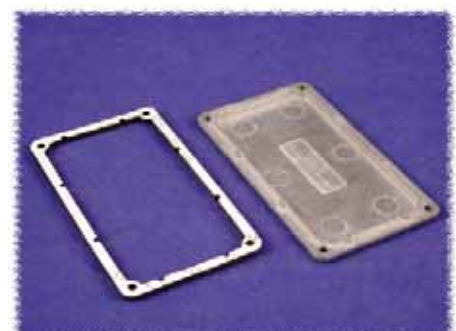
- Rugged, diecast aluminum alloy (tough yet easy to machine), electronic instrument enclosure.
- Lap joint construction protection against access of dust and splashing water. Also provides for improved EMI/RFI shielding.
- Enclosure is vibra finished for a smooth surface with no sharp edges.
- Four M3.5 x 0.6 mm stainless steel, Philips head, machine screws secure lid - into factory tapped holes.
- No internal ribs for easy installation of connectors without interference or additional milling.
- Low side wall draft angle (2 degrees or less) for easy P.C. board mounting.
- Standard version tested to meet IP54
- Watertight version includes pre-cut gasket, and has been designed to meet IP68.

Part Number		Overall Dimensions				
Non Watertight	Watertight	Units	L	W	Depth (With Lid)	Depth of Lid
1550A	1550WA	inch	3.50	1.38	1.16	0.16
		mm	89	35	30	4.10
1550B	1550WB	inch	4.51	2.52	1.16	0.16
		mm	114.5	64	30	4.10
1550C	1550WC	inch	4.56	3.56	2.16	0.16
		mm	115.7	90.5	55	4.10
1550D	1550WD	inch	4.54	2.54	2.16	0.16
		mm	115.3	64.5	55	4.10
1550E	1550WE	inch	6.75	4.75	2.16	0.16
		mm	171.5	120.6	55	4.10
1550F	1550WF	inch	6.75	4.75	4.16	0.16
		mm	171.5	120.6	105.7	4.10
1550G	1550WG	inch	8.75	5.75	2.17	0.16
		mm	222.3	146	55	4.10
1550H	1550WH	inch	8.75	5.75	4.16	0.16
		mm	222.3	146	105.7	4.10
1550J	1550WJ	inch	10.83	6.89	2.56	0.16
		mm	275	175	65	4.10
1550K	1550WK	inch	5.50	4.00	2.99	0.16
		mm	139.7	101.6	76	4.10
1550L	1550WL	inch	6.50	5.00	2.99	0.16
		mm	165	127	76	4.10
1550M	1550WM	inch	4.72	3.94	1.38	0.16
		mm	120	100	35	4.10
1550N	1550WN	inch	9.84	9.84	3.94	0.17
		mm	250	250	100	4.30
1550P	1550WP	inch	3.15	2.17	0.98	0.16
		mm	80	55	25	4.10
1550Q	1550WQ	inch	2.36	2.17	1.18	0.16
		mm	60	55	30	4.10

Non Watertight Version - IP54



Watertight Version - IP68



Heavy Duty Watertight Die Cast Enclosures 1550Z Series

Features

- Rugged, diecast aluminum alloy (tough yet easy to machine), electronic instrument enclosure.
- Two piece “tongue & groove” construction with a one piece silicone rubber gasket provides protection against access of dust and water.
- Ideal for repetitive opening and closing.
- Four recessed stainless steel machine screws secure lid into tapped holes.
- Easy to wall mount using “through box - blind hole” construction, outside of gasket protection.
- Lid screws are self capturing (lid holes are threaded with the first installation of lid screws).
- Tested to meet IP68.
- North American Mark of Safety - cUL & UL.



Part Number	Units	Overall Dimensions			
		L	W	Depth (With Lid)	Depth of Lid
1550Z101	inch	1.97	1.77	1.12	0.24
	mm	50	45	30	6.2
1550Z104	inch	2.52	2.28	1.38	0.20
	mm	64	58	35	5.2
1550Z102	inch	3.54	1.42	1.18	0.20
	mm	90	36	30	5.2
1550Z103	inch	3.85	2.52	1.35	0.36
	mm	98	64	34	9.2
1550Z106	inch	4.53	2.56	1.18	0.20
	mm	115	65	30	5.2
1550Z111	inch	4.53	2.56	2.17	0.20
	mm	115	65	55	5.2
1550Z113	inch	4.53	3.54	2.17	0.20
	mm	115	90	55	5.2
1550Z137	inch	4.75	4.75	4.00	0.81
	mm	121	121	102	20.5
1550Z107	inch	4.90	3.14	1.59	0.61
	mm	125	80	40	15.6
1550Z108	inch	4.90	3.14	2.26	0.61
	mm	125	80	57	15.6
1550Z115	inch	5.83	4.25	2.95	0.40
	mm	148	108	75	10.2
1550Z109	inch	5.91	2.52	1.45	0.40
	mm	150	63	37	10.2
1550Z139	inch	6.25	6.25	4.00	0.81
	mm	159	159	102	20.5
1550Z116	inch	6.29	3.93	2.37	0.79
	mm	160	100	60	20
1550Z117	inch	6.29	3.93	3.13	0.79
	mm	160	100	81	20
1550Z120	inch	6.73	4.76	2.17	0.40
	mm	171	121	55	10.2
1550Z124	inch	8.82	5.83	2.17	0.20
	mm	222	146	55	5
1550Z220	inch	8.82	5.83	3.25	1.28
	mm	222	146	82	32.5



Painted Diecast Aluminum Enclosures

1590 “Stomp” Series



Features

- Rugged, diecast aluminum alloy (tough - yet easy to machine), electronic instrument enclosure.
- This stock “Stomp Box” version is our popular 1590B & 1590BB & 1590XX enclosure - powder painted - to save stomp box manufacturers and experimenters time & money.
- Painted “Stomp Box” versions are coated with a smooth gloss polyester powder paint for a lasting finish, even after machining.
- Smooth paint allows for easy adhesion of labels and/or silk screens.
- Paint colors are matched to standard RAL colors (see table below).
- Lap joint construction provides protection against access of dust and splashing water. Also provides for improved EMI/RFI shielding.
- Unpainted & textured black version is also available & in many other sizes and styles - please see our 1590 series.
- Designed to meet IP54 (see gasket kit accessory below to meet IP66).
- Low side wall draft angle (2 degrees or less) for easy P.C. board mounting.
- Replacement screws - nickel plated, 6-32 x 1/2” - 1590MS100 - Package of 100. For an even funkier look - order our black replacement screws, 6-32 x 1/2” - 1590MS50BK - Package of 50

Part Number	Color	RAL Number	Units	Length	Width	Enclosure Depth (Less Lid)
1590BCB	Cobalt Blue	RAL 5013				
1590BGR	Green	RAL 6024	Inches	4.39	2.34	1.06
1590BLG	Light Gray	RAL 7035				
1590BOR	Orange	RAL 2009	mm	112	60	27
1590BRD	Red	RAL 3011				
1590BBCB	Cobalt Blue	RAL 5013				
1590BBGR	Green	RAL 6024	Inches	4.67	3.68	1.18
1590BBLG	Light Gray	RAL 7035				
1590BBOR	Orange	RAL 2009	mm	119	94	30
1590BBRD	Red	RAL 3011				
1590XXCB	Cobalt Blue	RAL 5013				
1590XXGR	Green	RAL 6024	Inches	5.72	4.77	1.39
1590XXLG	Light Gray	RAL 7035				
1590XXOR	Orange	RAL 2009	mm	145	121	35
1590XXRD	Red	RAL 3011				

Diecast Aluminum with P.C. Board Mounting Ribs

1590 "Ribbed" Series



Features

- Rugged, diecast aluminum alloy (tough yet easy to machine), electronic instrument enclosure.
- Integral card guides cast into all four (4) sides - accepts 1.5 mm (0.062") thick P.C. cards.
- Lap joint construction provides protection against access of dust and splashing water also provides for improved EMI/RFI shielding.
- Unpainted version is vibra finished for a smooth surface with no sharp edges.
- Painted version is painted with tough - satin black polyester powder paint for a lasting finish, even after machining. Black screws are included to enhance assembled appearance.
- Four machine screws secure lid - into tapped holes.
- Designed to meet IP54.

Part Number	Units	Length	Width	Enclosure Depth (Less Lid)	Apx. Draft (Degrees)
1590MM	Inches	1.97	1.97	1.06	2
	mm	50	50	27	
1590L	Inches	3.96	1.98	0.83	2
	mm	101	50	21	
1590M	Inches	4.48	2.49	1.06	2
	mm	112	62	27	
1590N	Inches	4.75	2.61	1.42	2
	mm	120	66	36	
1590PP	Inches	4.76	3.74	2.24	2
	mm	121	95	57	
1590P	Inches	6.01	3.24	1.81	2
	mm	152	82	46	
1590R	Inches	7.55	4.38	2.24	2
	mm	192	112	57	

Modified Enclosures



- *Machining*
- *Silk Screening*
- *Hot Stamping*
- *Special Colors*
- *Custom Materials*

Easy to quote and order

- Mark up our PDF drawings downloadable from our website
- Modify our AutoCad files downloadable from our website
- Email us at modifieds@hammondmfg.com

Hand Held Instrument - ABS

1593 Series

Features

- Electronic instrument enclosures, ideally suited for mounting printed circuit boards.
- Ergonomically designed for a comfortable fit into the user's hand.
- Recessed top for membrane display or pad.
- Units with battery door use our long life "three snap" door.
- Lap joint construction provides protection against dust accumulation and splashing water.
- Molded in black general purpose ABS plastic with a satin texture.
- Unit is secured with self tapping screws.



Part Number	Color	Removable Panels	Battery Door	Units	Overall Dimensions		
					L	W	H
1593DBK	Black	2	No	inch	4.5	1.4	1
1593DGY	Grey			mm	114	36	25
1593JBK	Black	0	No	inch	2.6	2.6	1.1
1593JGY	Grey			mm	66	66	28
1593KBK	Black	2	No	inch	2.6	2.6	1.1
1593KGY	Grey			mm	66	66	28
1593LBK	Black	2	No	inch	3.6	2.6	1.1
1593LGY	Grey			mm	92	66	28
1593NBK	Black	2	No	inch	4.3	2.9	1
1593NGY	Grey			mm	110	75	25
1593PBK	Black	1	Yes	inch	3.6	2.6	1.1
1593PGY	Grey			mm	92	66	28
1593QBK	Black	1	Yes	inch	4.4	2.6	1.1
1593QGY	Grey			mm	112	66	28
1593SBK	Black	1	Yes	inch	3.6	2.6	0.83
1593SGY	Grey			mm	92	66	21
1593TBK	Black	1	Yes	inch	4.4	2.6	0.83
1593TGY	Grey			mm	112	66	21
1593YBK	Black	1	Yes	inch	5.5	2.6	1.1
1593YGY	Grey			mm	140	66	28
1593XBK	Black	2	No	inch	5.5	2.6	1.1
1593XGY	Grey			mm	140	66	28



Optional Belt/Pocket Clip

- Molded from tough nylon.
- Includes 2 nylon screws (insulated to avoid internal interference).
- Mounting template included.

Part Number	Color
1599CLIPBK	Black
1599CLIPGY	Grey



DIN Clip

- Designed for mounting enclosures to DIN rails
- Includes hardware (quantity 4 of a #6 X 1/4" self tapping, phillips head screw) & drilling template
- Center to center hole spacing is 1.18" (30mm)
- Material is a rugged glass filled, black nylon (UL94-V0 flammability rating)
- Units are 1.8" (45.7mm) long, 0.4" (10.1mm) wide - overall
- Sold in packages of 2

Part No.	1427DINCLIP
----------	-------------

Miniature General Purpose - ABS 1551 Series

Features

- Ideally suited for mounting small printed circuit boards or used as potting boxes.
- Molded in black general purpose ABS plastic.
- Satin texture finish.
- Complete with lid and two self tapping screws.
- Screws are color matched to enclosure (black plated).
- 2 P.C. board standoffs molded into interior.
- Lap joint construction provides protection against access of dust and splashing water.
- Designed to meet IP54.



w/o Flange

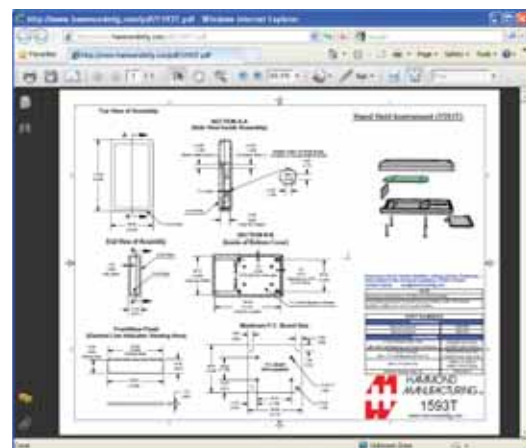


with Flange

Part Number		Units	Overall Dimensions		
w/o Flange	with Flange		L	W	H
1551GBK	1551GFLBK	inch mm	1.97 50	1.38 35	0.67 17
1551HBK	1551HFLBK	inch mm	2.36 60	1.38 35	0.67 17
1551KBK	1551KFLBK	inch mm	3.15 80	1.57 40	0.67 17
1551MBK	1551MFLBK	inch mm	1.38 35	1.38 35	0.79 20
1551LBK	1551LFLBK	inch mm	3.15 80	1.57 40	0.59 15
1551JBK	1551JFLBK	inch mm	2.36 60	1.38 35	0.59 15
1551FBK	1551FFLBK	inch mm	1.97 50	1.38 35	0.59 15
1551NBK	1551NFLBK	inch mm	1.38 35	1.38 35	0.59 15

For detailed drawings, CAD files, catalog requests and downloads please visit Hammond's website at:

www.hammondmfg.com



Soft Sided Hand Held - ABS

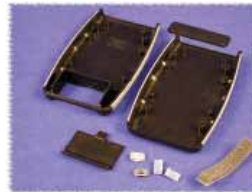
1553 Series

Features

- Ergonomically designed for hand-held comfort.
- Choice of two versions (with or without battery door & compartment) - in two sizes - in two colors.
- Molded in general purpose ABS plastic with a grey or black overmold, soft plastic grip.
- Top cover is recessed for membrane display or key-pad.
- P.C. board standoffs are molded into case (see drawings or photos for more details).
- Includes removable front panel (for easy modifications) and assembly hardware.
- Battery door & compartment version includes 4 battery clips (for 2 - AA batteries) and a 9 volt (PP3) battery clip.



w/o Battery Door



with Battery Door

Part Number	Color	Battery Door	Units	Overall Dimensions			Max PCB Size*	
				L	W	H	L	W
1553AABK	Black	No	Inches	2.95	1.97	0.67	2.73	1.65
1553AAGY	Grey		mm	75.00	50.08	17	69.26	41.94
1553ABK	Black	No	Inches	3.94	2.41	0.67	3.73	1.90
1553AGY	Grey		mm	100.00	61.00	17.00	95.00	48.00
1553BBK	Black	No	Inches	4.62	3.11	0.95	4.30	2.40
1553BGY	Grey		mm	117.00	79.00	24.00	109.00	61.00
1553CBK	Black	No	Inches	4.62	3.11	1.299	4.30	2.40
1553CGY	Grey		mm	117.00	79.00	33.00	109.00	61.00
1553DBK	Black	No	Inches	5.80	3.50	0.98	5.48	2.65
1553DGY	Grey		mm	147.00	89.00	24.00	139.00	67.00
1553BBKBAT	Black	Yes	Inches	4.62	3.11	0.95	3.08	2.40
1553BGYBAT	Grey		mm	117.00	79.00	24.00	78.00	61.00
1553CBKBAT	Black	Yes	Inches	4.62	3.11	1.299	4.30	2.40
1553CGYBAT	Grey		mm	117.00	79.00	33.00	109.00	61.00
1553DBKBAT	Black	Yes	Inches	5.80	3.50	0.98	4.20	2.65
1553DGYBAT	Grey		mm	147.00	89.00	24.00	107.00	67.00

*NOTE: P.C. board dimensions listed are maximum possible and not square - please consult drawings for exact details.

Soft Sided Hand Held - Colored ABS

1553 Series

Features

- Ergonomically designed for hand-held comfort.
- Choice of two versions (with or without battery door & compartment) - in two sizes.
- Choice of four added colors:
 - black
 - translucent blue (translucent to blue, white and near white LEDs, readouts & displays)
 - red
 - "safety" yellow
- For more color options see our original 1553 series.
- Molded in general purpose ABS plastic with a black over-mold, soft plastic grip.
- Top cover is recessed for membrane display or keypad.
- P.C. board standoffs are molded into case (see drawings or photos for more details).
- Includes removable front panel (for easy modifications) and assembly hardware.
- Battery door & compartment version includes 4 battery clips (for 2 - AA batteries) and a 9 volt (PP3) battery clip.



Part Number	Color	Side grip color	Battery Door	Units	Overall Dimensions			Max PCB Size	
					L	W	H	L	W
1553BBKBK	Black			Inches	4.62	3.11	0.95	4.3	2.4
1553BRDBK	Red	Black	No						
1553BYLBK	Yellow			mm	117	79	24	109	61
1553BTBUBK	Transparent Blue								
1553DBKBK	Black			Inches	5.8	3.5	0.98	5.48	2.65
1553DRDBK	Red	Black	No						
1553DYLBK	Yellow			mm	147	89	24	139	67
1553DTBUBK	Transparent Blue								
1553BBKBKBAT	Black			Inches	4.62	3.11	0.95	3.08	2.4
1553BRDBKBAT	Red	Black	Yes						
1553BYLBKBAT	Yellow			mm	117	79	24	78	61
1553BTBUBKBAT	Transparent Blue								
1553DBKBKBAT	Black			Inches	5.8	3.5	0.98	4.2	2.65
1553DRDBKBAT	Red	Black	Yes						
1553DYLBKBAT	Yellow			mm	147	89	24	107	67
1553DTBUBKBAT	Transparent Blue								



Project Enclosures

RL Series

Features

- Designed to house P.C. boards - for hand-held use or wall mount.
- Molded in light grey - general purpose ABS plastic with a light texture.
- Two part construction. Both halves include smooth recessed area for membrane, label or silkscreen (see chart below for recess size).
- P.C. board standoffs are molded into both halves of the enclosure.
- Designed to meet IP54.
- All sizes also available in a flanged lid version.
- Includes four - M3 assembly screws.



Part Number	Part Number (With Flanged Lid)	Units	Length	Width	Enclosure Depth (With Lid)	Lid Recess Size	Bottom Recess Size	P.C.B. Mounting Dimensions	Wall Mount Dimensions (Flanged Lid)
RL6105	RL6105-F	inch mm	3.15 80	2.36 60	1.18 30	2.13 x 2.05 54 x 52	2.13 x 2.05 54 x 52	2.52 x 1.18 64 x 30	3.62 92
RL6115	RL6115-F	inch mm	3.15 80	2.36 60	1.57 40	2.13 x 2.05 54 x 52	2.13 x 2.05 54 x 52	2.52 x 1.18 64 x 30	3.62 92
RL6215	RL6215-F	inch mm	4.92 125	3.15 80	1.38 35	3.78 x 2.76 96 x 70	3.78 x 2.76 96 x 70	4.21 x 1.57 107 x 40	5.39 137
RL6225	RL6225-F	inch mm	4.92 125	3.15 80	1.97 50	3.78 x 2.76 96 x 70	3.78 x 2.76 96 x 70	4.21 x 1.57 107 x 40	5.39 137
RL6335	RL6335-F	inch mm	4.92 125	3.94 100	2.36 60	3.78 x 3.46 96 x 88	3.78 x 3.46 96 x 88	4.17 x 2.56 106 x 65	5.39 137
RL6365	RL6365-F	inch mm	4.92 125	3.94 100	3.54 90	3.78 x 3.46 96 x 88	3.78 x 3.46 96 x 88	4.17 x 2.56 106 x 65	5.39 137
RL6435	RL6435-F	inch mm	5.91 150	3.94 100	2.36 60	4.72 x 3.54 120 x 90	4.72 x 3.54 120 x 90	5.20 x 2.36 132 x 60	6.38 162
RL6465	RL6465-F	inch mm	5.91 150	3.94 100	3.54 90	4.72 x 3.54 120 x 90	4.72 x 3.54 120 x 90	5.20 x 2.36 132 x 60	6.38 162
RL6555	RL6555-F	inch mm	6.89 175	4.92 125	2.76 70	5.59 x 4.53 142 x 115	5.59 x 4.53 140 x 112	6.06 x 2.76 154 x 70	7.36 187
RL6585	RL6585-F	inch mm	6.89 175	4.92 125	3.94 100	5.59 x 4.53 142 x 115	5.59 x 4.41 140 x 112	6.06 x 2.76 154 x 70	7.36 187
RL6655	RL6655-F	inch mm	7.87 200	5.91 150	2.76 70	6.50 x 5.31 165 x 135	6.50 x 5.31 165 x 135	7.01 x 3.94 178 x 100	6.5 216
RL6685	RL6685-F	inch mm	7.87 200	5.91 150	3.94 100	6.50 x 5.31 165 x 135	6.50 x 5.31 165 x 135	7.01 x 3.94 178 x 100	6.5 216

Hand-Held ABS Plastic RL Series

Features

- Designed to house P.C. boards - for hand-held use.
- Molded in light grey - general purpose ABS plastic with a light texture (material carries a UL flammability rating of UL94 HB).
- Two part - snap action - clam shell construction. Both halves include smooth recessed area for membrane, label or silk-screen.
- P.C. board standoffs are molded into both halves of the enclosure. Four short M3 screws included.
- P.C. board guides molded into top half.
- Designed to meet IP54.
- Includes four - M3 assembly screws.



Part Number	Color	Units	Length	Width	Enclosure Depth (With Lid)
RL6015	Grey	inch <i>mm</i>	4.09 104	2.56 65	1.57 40
RL6035	Grey	inch <i>mm</i>	5.67 144	2.56 65	1.57 40
RL6055	Grey	inch <i>mm</i>	7.01 178	4.13 105	1.57 40
RL6065	Grey	inch <i>mm</i>	8.07 205	4.13 105	1.57 40

ABS Plastic - Hand-Held

RH Series

Features

- Electronic instrument enclosures, ideally suited for mounting printed circuit boards.
- Ergonomically designed for a comfortable fit into the user's hand.
- Lap joint construction provides protection against dust accumulation and splashing water.
- Removeable front panel for easy modifications.
- Molded in a light grey general purpose ABS plastic with a light texture (material carries a UL flammability rating of UL94 HB).
- Assembled with M3 Philips machine screws, threaded into integral brass bushings. Perfect for applications when repetitive assembly and disassembly are required (except for the two smallest sizes). The RH3115 and the RH3135 use self tapping M2.6 screws.
- Both top and bottom halves contain P.C. board standoffs molded in.
- The two largest sizes (RH3185 & RH3195) include four self adhesive rubber feet for desk top use.



Standard

Part Number	Units	Length	Width	Enclosure Depth (assembled)
RH3115	inch	3.94	2.36	0.98
	mm	100	60	25
RH3135	inch	4.72	2.76	0.98
	mm	120	70	25
RH3155	inch	6.5	3.15	1.26
	mm	165	80	32
RH3165	inch	6.5	3.94	1.26
	mm	165	100	32
RH3185	inch	7.28	5.31	1.57
	mm	185	135	40
RH3195	inch	7.48	3.94	1.57
	mm	190	100	40



With Battery Door

Part Number	Part Number with Gaskets	Color	Units	Length	Width	Enclosure Depth (assembled)
RH3015	RH3005*	Grey	inch	5.12	2.68	0.98
			mm	130	68	25
RH3055	RH3045*	Grey	inch	6.50	3.35	1.18
			mm	165	85	30

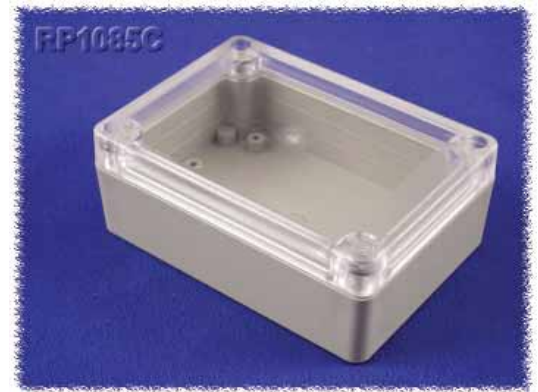
* Designed to meet IP 65



Watertight ABS Plastic RP Series

Features

- Ideally suited for mounting printed circuit boards or DIN rail mounted components.
- Material - General purpose ABS plastic (material carries a UL flammability rating of UL94 HB).
- Color is a light gray with a light texture. Also available with a clear polycarbonate lid (see table below).
- Gasketed lid with two piece "tongue & groove" construction provides protection against access of oil, dust and water.
- Rubber gasket is included and must be field installed.
- Lid includes smooth recessed area for membrane, label or silkscreen (see chart below for recess size).
- Designed to meet IP 65.
- Lid is secured with self captivating - M3.5 stainless steel machine screws (included), threaded into integral stainless steel bushings (for repetitive assembly & disassembly). All stainless steel hardware to avoid corrosion caused by dissimilar metals.
- Lid screws are self captivating (lid holes are threaded with the first installation of lid screws).
- Internal features are maximized for mounting options:
 - Internal DIN rail mounting tabs - molded in.
 - Options vary with size.



Part No.	Part No. ABS with Clear Lid	Units	Length	Width	Height (Includes Lid)	Lid Recess Size
RP1025	RP1025C	inch mm	2.56 65	2.36 60	1.57 40	1.54 x 2.05 39 x 52
RP1065	RP1065C	inch mm	3.35 85	3.15 80	2.17 55	2.32 x 2.83 59 x 72
RP1085	RP1085C	inch mm	4.13 105	2.95 75	1.57 40	2.56 x 3.07 65 x 78
RP1095	RP1095C	inch mm	4.13 105	2.95 75	2.17 55	2.56 x 3.07 65 x 78
RP1135	RP1135C	inch mm	4.92 125	3.35 85	2.17 55	3.03 x 3.90 77 x 99
RP1205	RP1205C	inch mm	5.71 145	4.13 105	1.77 45	4.57 x 3.78 116 x 96

Part No.	Part No. ABS with Clear Lid	Units	Length	Width	Height (Includes Lid)	Lid Recess Size
RP1215	RP1215C	inch mm	5.71 145	4.13 105	2.56 65	4.57 x 3.78 116 x 96
RP1175	RP1175C	inch mm	6.5 165	3.35 85	2.17 55	2.76 x 5.47 70 x 139
RP1245	RP1245C	inch mm	6.5 165	4.92 125	2.95 75	5.43 x 4.57 138 x 116
RP1285	RP1285C	inch mm	7.32 186	5.75 146	2.95 75	5.08 x 5.91 129 x 150
RP1455	RP1455C	inch mm	8.66 220	6.5 165	2.36 60	7.28 x 5.91 185 x 150
RP1465	RP1465C	inch mm	8.66 220	6.5 165	3.35 85	7.28 x 5.91 185 x 150

Sealed - ABS Plastic RS Series

Features

- Designed to house P.C. boards - sealed from dust and water (not for outdoor use).
- Molded in light grey - general purpose ABS plastic with a light texture (material carries a UL flammability rating of UL94 HB).
- Two part - styled lid construction. Top half includes smooth recessed area for membrane, label or silkscreen.
- P.C. board standoffs are molded into the bottom (two smallest sizes) and molded into both halves of the enclosure (two largest sizes). Four short M3 self tapping screws included.
- Gasketed lid with two piece "tongue & groove" construction provides protection against access of oil, dust and water.
- Designed to meet IP65.
- Includes four - M4 assembly screws (see table below for type).
- Lid screws are self capturing (lid holes are threaded with the first installation of lid screws).



Part Number	Color	Assembly Method	Lid Gasket	Units	Length	Width	Enclosure Depth (With Lid)
RS5105S	Grey	Four - Self Tapping	Installed	inch	4.13	4.13	2.17
		Stainless Steel Screws		mm	105	105	55
RS5305S	Grey	Four - Self Tapping	Installed	inch	6.5	4.13	3.07
		Stainless Steel Screws		mm	165	105	78
RS5705	Grey	Four - Stainless Steel Machine Screws	Kit (Included)	inch	9.84	7.87	3.54
		(into Stainless Steel Inserts)		mm	250	200	90
RS5805	Grey	Four - Stainless Steel Machine Screws	Kit (Included)	inch	9.84	7.87	5.12
		(into Stainless Steel Inserts)		mm	250	200	130

Watertight Polycarbonate RP Series

Features

- Ideally suited for mounting printed circuit boards or DIN rail mounted components.
- Material - Polycarbonate (material carries a UL flammability rating of UL94 HB).
- Color is an off white with a light texture.
- Gasketed lid with two piece “tongue & groove” construction provides protection against access of oil, dust and water.
- Rubber gasket is included and must be field installed.
- Lid includes smooth recessed area for membrane, label or silk-screen (see chart below for recess size).
- Designed to meet IP 65.
- Lid is secured with self captivating - M3.5 stainless steel machine screws (included), threaded into integral stainless steel bushings (for repetitive assembly & disassembly). All stainless steel hardware to avoid corrosion caused by dissimilar metals.
- Lid screws are self captivating (lid holes are threaded with the first installation of lid screws).
- Internal features are maximized for mounting options:
 - Internal DIN rail mounting tabs - molded in.
 - Options vary with size.



Part No.	Units	Length	Width	Height (Includes Lid)	Lid Recess Size
RP1020	inch	2.56	2.36	1.57	1.54 x 2.05
	mm	65	60	40	39 x 52
RP1060	inch	3.35	3.15	2.17	2.32 x 2.83
	mm	85	80	55	59 x 72
RP1080	inch	4.13	2.95	1.57	2.56 x 3.07
	mm	105	75	40	65 x 78
RP1090	inch	4.13	2.95	2.17	2.56 x 3.07
	mm	105	75	55	65 x 78
RP1130	inch	4.92	3.35	2.17	3.03 x 3.90
	mm	125	85	55	77 x 99
RP1200	inch	5.71	4.13	1.77	4.57 x 3.78
	mm	145	105	45	116 x 96
RP1210	inch	5.71	4.13	2.56	4.57 x 3.78
	mm	145	105	65	116 x 96
RP1170	inch	6.5	3.35	2.17	2.76 x 5.47
	mm	165	85	55	70 x 139
RP1240	inch	6.5	4.92	2.95	5.43 x 4.57
	mm	165	125	75	138 x 116
RP1280	inch	7.32	5.75	2.95	5.08 x 5.91
	mm	186	146	75	129 x 150
RP1450	inch	8.66	6.5	2.36	7.28 x 5.91
	mm	220	165	60	185 x 150
RP1460	inch	8.66	6.5	3.35	7.28 x 5.91
	mm	220	165	85	185 x 150

Watertight - Deep Lid RP Series

Features

- Ideally suited for mounting printed circuit boards or DIN rail mounted components requiring a deep enclosure.
- Choice of two materials - General purpose ABS plastic or Polycarbonate (both materials carry a UL flammability rating of UL94 HB).
- ABS Plastic color is a light gray with a light texture. Also available with a clear polycarbonate lid (see table below).
- Polycarbonate version is available in an off white with a light texture.
- Gasketed lid with two piece “tongue & groove” construction provides protection against access of oil, dust and water.
- Rubber gasket is included and must be field installed.
- Lid includes smooth recessed area for membrane, label or silkscreen (see chart below for recess size).
- Designed to meet IP 65.
- Lid is secured with self captivated - M3.5 stainless steel machine screws (included), threaded into integral stainless steel bushings (for repetitive assembly & disassembly). All stainless steel hardware to avoid corrosion caused by dissimilar metals.
- Lid screws are self captivated (lid holes are threaded with the first installation of lid screws).
- Internal features are maximized for mounting options:
 - Internal DIN rail mounting tabs - molded in.
 - Options vary with size.



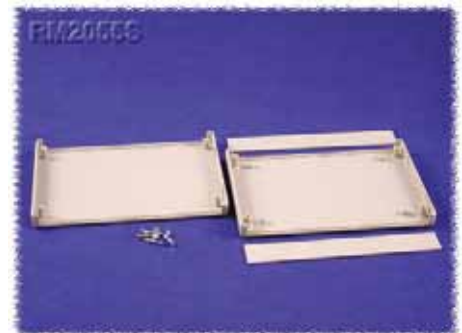
Part No. ABS	Part No. Polycarb	Part No. ABS with Clear Lid	Units	Length	Width	Height (Includes Lid)	Lid Recess Size
RP1155	RP1150	RP1155C	inch <i>mm</i>	4.92 125	3.35 85	3.35 85	2.76 x 3.66 70 x 93
RP1185	RP1180	RP1185C	inch <i>mm</i>	6.5 165	3.35 85	3.35 85	2.76 x 5.28 70 x 134
RP1385	RP1380	RP1385C	inch <i>mm</i>	7.32 186	5.75 146	4.33 110	4.92 x 5.79 125 x 147

Instrument ABS Plastic Enclosures

RM Series

Features

- Designed to house P.C. boards - for instrument use.
- Molded in light grey - general purpose ABS plastic with a light texture (front & rear panels are smooth). Material carries a UL flammability rating of UL94 HB.
- Two part - clam shell construction. Bottom half includes molded in standoffs for easy P.C. board installation. Larger enclosures also include P.C. board standoffs on the top half. Four short M3 screws included
- Front & rear panels are interchangeable and easily removable for modifications.
- Tongue and groove construction provides protection against dust & water. Designed to meet IP43.
- Includes two (or four) - assembly screws (depending on size).
- All units except the RM2015S and RM2055S are secured with M3 Philips machine screws, threaded into integral brass bushings. Perfect for applications when repetitive assembly and disassembly are required. The RM2015S and RM2055S use self tapping Philips screws.
- Options include replacement IR translucent or aluminum panels.



Part Number	Color	Units	Length	Width	Enclosure Depth (Assembled)
RM2015S	Grey	inch <i>mm</i>	5.12 130	3.94 100	1.18 30
RM2015M	Grey	inch <i>mm</i>	5.12 130	3.94 100	1.97 50
RM2015L	Grey	inch <i>mm</i>	5.12 130	3.94 100	2.76 70
RM2055S	Grey	inch <i>mm</i>	7.48 190	5.51 140	1.18 30
RM2055M	Grey	inch <i>mm</i>	7.48 190	5.51 140	1.97 50
RM2055L	Grey	inch <i>mm</i>	7.48 190	5.51 140	2.76 70
RM2095S	Grey	inch <i>mm</i>	9.84 250	7.09 180	1.97 50
RM2095M	Grey	inch <i>mm</i>	9.84 250	7.09 180	2.95 75
RM2095L	Grey	inch <i>mm</i>	9.84 250	7.09 180	3.94 100



HAMMOND MANUFACTURING™

USA

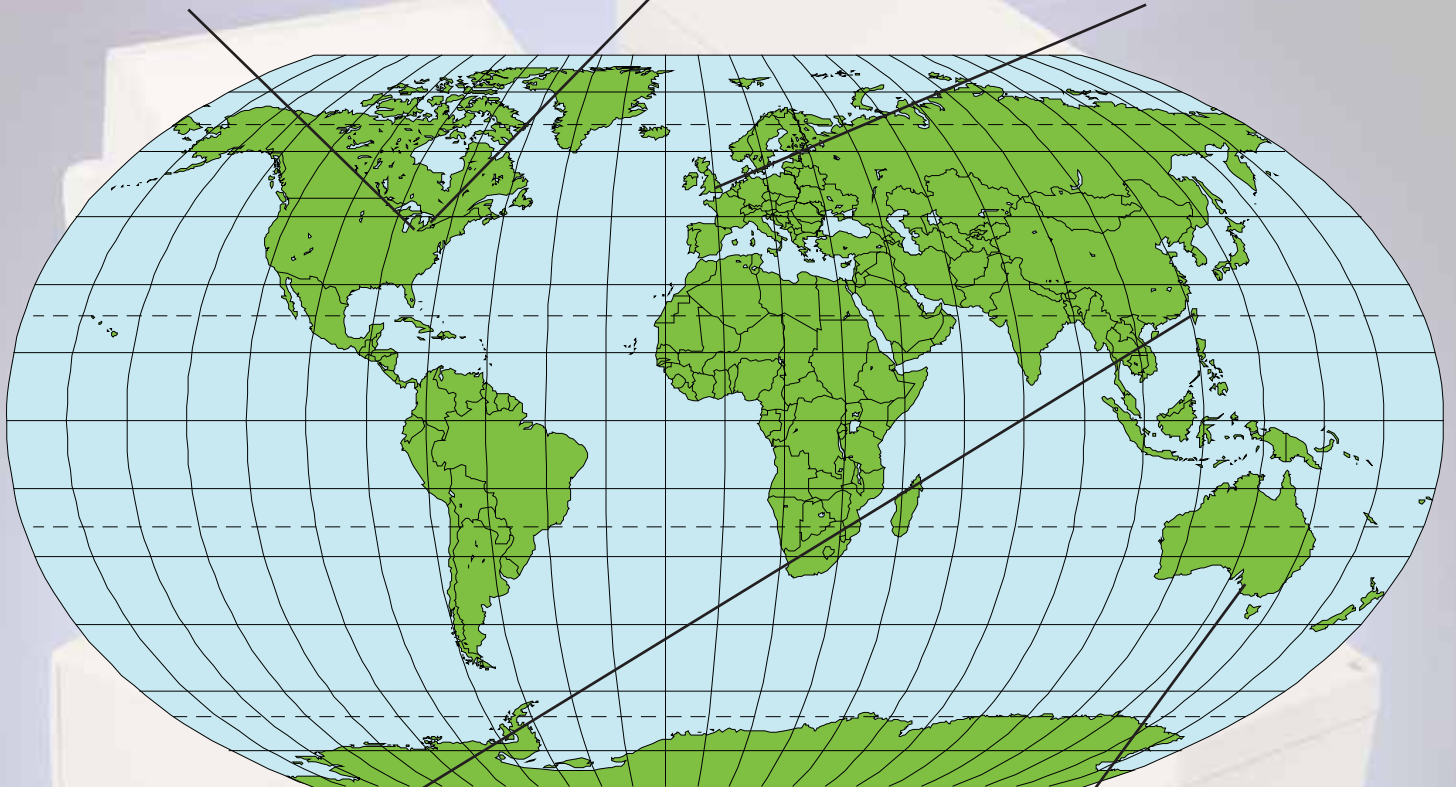
Hammond Mfg. Co. Inc.
475 Cayuga Road
Cheektowaga, NY 14225
Tel: +1 716 630 7030
Fax: +1 716 630 7042

CANADA

Hammond Mfg. Co. Ltd.
394 Edinburgh Road North
Guelph, Ontario N1H 1E5
Tel: +1 519 822 2960
Fax: +1 519 822 0715

Europe

Hammond Electronics Limited
1 Onslow Close
Kingsland Business Park
Basingstoke, Hampshire
RG24 8QL
United Kingdom
Tel: +44 1256 812812
Fax: +44 1256 332249



Asia-Pacific

Hammond Electronics Asia Inc.
10F., No. 81, Sec. 1, Kuang Fu Road
San Chung City, Taipei 241
Taiwan
Tel: +886 2 2999 8918
Fax: +886 2 2999 8955

Australia

Hammond Electronics Pty. Ltd.
ABN 13 099 121 981
11-13 Port Road
Queenstown, SA 5014
Australia
Tel: +61 8 8240 2244
Fax: +61 8 8240 2255

www.hammondmfg.com
asia@hammondmfg.com