



# INDUSTRIAL WATERTIGHT ENCLOSURES

PERFECT FOR SMALLER APPLICATIONS

TYPE 4/4X  US

ALUMINUM

GLASS REINFORCED POLYESTER

POLYCARBONATE

## Type 4X / 6P Diecast Aluminum Enclosures

## 1590Z Series



Scan here for  
more detailed  
product  
information!

### Key Features:

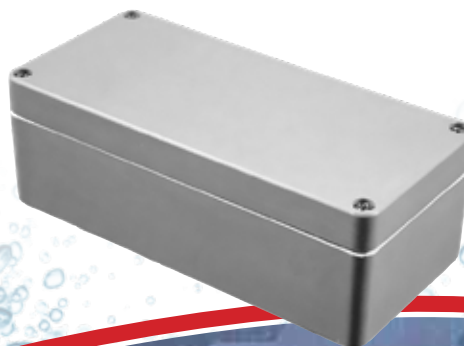
- Min size - 1.98"L x 1.77"W x 1.20"D Max size - 15.75"L x 9.06"W x 7.09"D
- 16ga galvanized steel inner panels are available for most sizes, and are sold separately.
- Available unfinished or powder coated in textured black or smooth gray.
- Rugged, diecast aluminum alloy (tough yet easy to machine), electronic instrument enclosure available in unfinished, powder coated or smooth gray.
- Four recessed, self captivating stainless steel machine screws secure lid into tapped holes.
- Easy to wall mount using "through box - blind hole" construction, outside of gasket protection.
- Designed to meet IP68. North American Mark of Safety.
- Impact rating of IK08 per IEC62262

## Type 4, 4X Glass Reinforced Polyester Enclosures

## 1590ZGRP Series

### Key Features:

- Min size - 3.17"L x 2.97"W x 2.17"D Max size - 23.62"L x 9.84"W x 6.30"D
- Gray, smooth finish. Internal mounting shelf & bonding / mounting nuts molded in.
- Easy wall mounting via "through box - blind hole" construction, outside of the gasket protection.
- Optional 16 gauge, galvanized steel inner panels available.
- Heavy duty, thick wall design, lid contains self captivated stainless steel screws.
- File #E65324 and IP66 Rated, impact rating of IK08 per IEC62262
- Heat resistance 100-120 degree C, cold -40 degree C.



Scan here for more  
detailed product  
information!



# Type 4/4X, 6/6P Polycarbonate Enclosures

**Water-Tight with  
Multiple Mounting  
Features**

## Key Features:

- Ideally suited for mounting printed circuit boards. Aluminum inner panels also available separately.
- Uv stabilized for outdoor use and carries a UL94-5VA flammability rating.
- Lid is secured with included M4 stainless steel machine screws.
- Wall-mounting holes are located outside of the gasket channel - Same wall mounting holes can be used to install a wall mounting bracket, part number 1554FT or to install an accessory foot kit.

## 1554 Series

- Min size - 2.60"L x 2.60"W x 1.60"D    Max size - 11.81"L x 9.45"W x 4.72"D
- Flat Lid version.
- Available with gray, clear, or smoked lid.



Scan here for  
more detailed  
product  
information!



Scan here for more detailed  
product information!

## 1555 Series

- Min size - 2.60"L x 2.60"W x 1.60"D    Max size - 11.81"L x 9.45"W x 4.72"D
- Styled Lid version.
- Smooth recessed surface on lid for a membrane keypad or label, standoffs molded in the interior of the lid.
- Designed for #6 self tapping screws and a more modern "styled" look v.s. our traditional flat lid.



## 1555F Series

- Min size - 2.56"L x 2.56"W x 1.67"D    Max size - 9.45"L x 6.34"W x 2.40"D
- Flanged Lid version.
- Designed for wall mounting. Interior is secure as lid screws are behind the lid. Can be made more secure if wall mounted with security screws (tamper resistant screws).
- Satin texture finish with smooth recessed surface on lid for a membrane keypad or label.
- Standoffs molded in the interior of the lid & enclosure - designed for #4 x 1/4" self tapping screws (our part number 1555TS100).
- Base features robust mounting flanges capable of withstanding abuse.



Scan here for  
more detailed  
product  
information!



Scan here for  
more detailed  
product  
information!



## 1557 Series

- Min size - 3.2"L x 3.2"W x 1.8"H    Max size - 7.9L x 7.87"W x 2.76"H
- Can be used in a tabletop configuration or two different wall-mount configurations.
- Available in black or gray.

**hammondmfg.com**

