



INDUSTRIAL GRADE POWER STRIPS

HEAVY DUTY & EXTREMELY DURABLE



INDUSTRIAL POWER STRIP LINEUP

1584 Series

15 Amp

1584-S Series

15 Amp with Surge Protection

1589 Series

20 Amp

1584H Series

Hospital Grade

1581 Series

IEC Outlets

1581-DP Series

IEC Outlets - Double Pole

1580 Series

Compact Power Block

1580-X Series

Switch for each receptacle

Key Product Features

- All metal housing - tough extruded aluminum case with a black powder paint coated steel cover.
- Superior build quality with rugged wiring and superior circuit protection.
- Heavy duty cord wire 14/3 (SJT type for extreme temperatures).
- Made in North America Quality.

**CLICK HERE
FOR MORE
DETAILED
INFORMATION**



Various options by series

- 15A/125V resettable circuit breaker - single or double pole.
- Plugs: 5-15P Straight Blade, L5-15P Locking Type which prevents accidental plug removal, IEC style.
- Surge protection rated at 1080 Joules.
- Cord lengths of 6' and 15'.
- 90 degree rotated outlet models.
- CSA Hospital Grade approved models.

For any inquiries on our extensive product selection -
contact your Hammond Representative!

USA: (716) 630-7030

CANADA: ON/West - (519) 822-2960 | QC/Atlantic - (450) 975-1884

**Built to meet the rugged requirements
of daily Industrial & Commercial use**





HAMMOND®

Thousands of enclosures to suit your needs

Quality Products



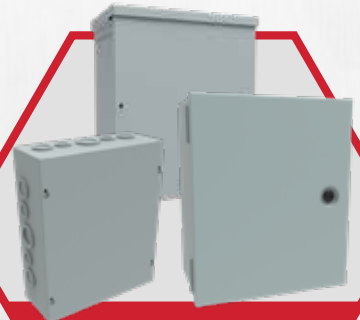
Service Excellence



**INDUSTRIAL
ENCLOSURES**



**CORROSION
RESISTANT
ENCLOSURES**



**COMMERCIAL
ENCLOSURES**



**SMALL
ENCLOSURES**

Visit: hammondmfg.com

*...A library of enclosure specification tools,
available instantly.*

For any inquiries on our extensive product selection - contact your Hammond Representative!

USA: (716) 630-7030 • CANADA: ON/West - (519) 822-2960 | QC/Atlantic - (450) 975-1884