



Specifier Handbook

**A Consultant's Guide for
Choosing the Right
Enclosure**



Table of Contents

Introduction	3
Intended Use of Electrical Enclosures	3
What is a Standards Organization	3
Standards Organizations	4
North American Standards	5
Hammond Enclosure Ratings	5
European Standards	5
Dual Standards	5
NEMA Type Designation	6
Protection Rating - Quick Selection Guide.....	7
Industry and the Products They Use.....	7
Corrosion Protection - Mild Steel/Powder Coat	8
Corrosion Resistance of Various Enclosure Materials	8
Suggested Applications for Corrosion Resistant Enclosures	8
Pre-Treatment and Paint Process	9
Powder Coating Reference Chart	9
Two Design Styles	10
Traditional & Euro/Contemporary Design.....	10
Features & Benefits of Enclosure Types	11
Writing the Enclosure Specification	
Specifying the Manufacturer	12
Generic Description Templates	12
Detailed Description Templates	
Small Wallmounts	14
Medium/Large Wallmounts	15
Two Door Enclosures (Wallmount & Floormount).....	16
Large Heavy Duty Single and Multi Door Free Standing Enclosures	17
Industrial Type 4X Wallmounts - Non-Metallic.....	18
Commercial Type 1	19
Commercial Type 3R.....	19
Modifications Services	20
Why have Hammond Modify your Enclosure?	20
www.hamcfg.com	
Information at Your Finger Tips.....	21
Contact Us	22
Warranty Information	22

Introduction

This guide is intended to assist in the preparation of specifications for electrical enclosures. We hope it is easy to follow and gives you the opportunity to upgrade sections that may have been dormant for some time.

With many processes, materials and designs changing we sometimes find the old mixed with the new, resulting in product descriptions that cannot be certified or go beyond the current standards in place.

For further assistance please feel free to contact our manufacturing facility in Guelph, Ontario. Our contact numbers are located on the back cover of this publication.

Intended Use of Electrical Enclosures

Electrical enclosures are designed for commercial and industrial electrical applications and as such should be selected, transported, handled, installed, and re-fabricated by qualified professional electricians. These products are not intended for household applications or use by the general public. All applications of these products should be in accordance with proper inspections, test approvals, warnings, notices, and instructions as indicated by Consumer Product Safety Regulations and all other applicable local, state, provincial, and federal laws.

Hammond Manufacturing supplies enclosures built to the 3rd party specifications (i.e. UL, CSA). Hammond offers no guarantee or warranty as to the applicability of our products outside these specifications. If you have any concerns about the appropriate enclosure selection for your application, please contact Hammond for advice regarding the variables in your particular situation.

What is a Standards Organization?

- Standards organizations create rating measurements for the performance of many different products.
- There are many standards organizations throughout the world, however those most commonly recognized are North American and European organizations.
- Electrical enclosures are rated by organizations like NEMA, CSA, UL and IEC which identify an enclosure's ability to provide protection from dust, dripping water, hose directed water and more.

While these standards are all intended to guide the user to make the right choice of product, there are some important differences between them.

Standards Organizations



www.nema.org

NEMA

National Electrical Manufacturers' Association

- 1300 North 17th Street Rosslyn, VA 22209
- NEMA Standards Publication No. 250 enclosures for Electrical Equipment (1000 Maximum)
- NEMA Standards Publication No. ICS6 enclosures for Industrial Controls and Systems



www.ul.com

UL

Underwriters' Laboratories Inc.

- 333 Pfingsten Road, Northbrook, IL 60062
- UL 50 Cabinets and Boxes
- UL 508 Industrial Control Equipment
- UL 870 Wireways, Auxiliary Gutter, and Associated Fittings



www.csa.ca

CSA

CSA International

- 178 Rexdale Boulevard, Etobicoke (Toronto), Ontario, Canada M9W 1R3
- CSA Standard C22.2, No 0 General Requirements - Canadian Electrical Code, Part II
- CSA Standard C22.2, No 0.4 Bonding and Grounding of Electrical Equipment (Protective Equipment)
- CSA Standard C22.2, No. 14 Industrial Control Equipment for Use in Ordinary (Non-Hazardous) Locations
- CSA Standard C22.2, No. 40 Cutout, Junction, and Pull Boxes
- CSA Standard C22.2, No. 26 Construction and Test of Wireways, and Auxiliary Gutters, and Associated Fittings.
- CSA Standard C22.2, No. 94-M91 Special Purpose Enclosures



www.amtonline.org

JIC

Joint Industry Council

c/o AMT - The Association for Manufacturing Engineering

- 7901 Westpark Drive, McLean, VA 22101
- EMP-1 Electrical Standards for Mass Production Equipment
- EGP-1 Electrical Standards for General Purpose Machine Tools
- These standards have been replaced by NFPA-79



www.eia.org

EIA

Electronic Industries Association

- 2500 Wilson Blvd, Arlington, VA 22201
- EIA RS-310-D Cabinets, Racks, Panels, and Associated Equipment



www.iec.ch

IEC

International Electrotechnical Commission

- 3 Rue de Varemb, Geneva, Switzerland
- IEC 60529 Classification of Degrees of Protection Provided by Enclosures



www.cemarking.net

CE

Conformite Europeene

- European Commission



www.ansi.org

ANSI

American National Standards Institute

- 1819 L Street NW Washington, DC 20036

North American Standards

In North America, NEMA, UL and CSA are the most commonly recognized standards organizations.

They are *almost* identical in their rating and testing of enclosures.

UL and CSA

- Provide “certification labels” to be permanently attached inside the enclosures.
- Require that enclosures be tested in an approved lab in order to prove their performance.
- Inspect manufacturers to ensure they use approved materials and build to tested product designs.

NEMA, EEMAC and JIC

- Do not provide “certification labels” for enclosures
- Do not provide testing services or require enclosures to be tested.
- Leave compliance and testing to the discretion of the manufacturer.

JIC Ratings

- JIC or Joint Industrial Commission ratings are standards which (in brief) specify minimum allowable material thickness for various enclosure sizes.

Hammond Enclosure Ratings

In general, Hammond Enclosures are...

- Listed by **UL**
- Certified by **CSA**
- Comply with **NEMA**
- Comply with **EEMAC**
- Comply with **JIC**
- Comply with **IEC**

European Standards

IEC

In Europe, IEC ratings are the most commonly recognized standards for enclosures.

- IEC ratings are similar to NEMA, but the pass or fail requirements are different. (see NEMA to IEC Cross Reference Chart on page 7).
- IEC does not include ratings for enclosures in conditions of corrosion, rust or oil.
- IEC does not provide testing, so testing and compliance is left up to the manufacturer. In Europe, TUV and VDE are two popular testing agencies that manufacturers use.

CE

- CE is a European Union (EU) symbol, which indicates that the product complies with the EU directives or standards for that product.

CE *does not apply to empty enclosures* because enclosures are components of a final assembly. Testing and compliance to EU directives is the responsibility of the final equipment manufacturer.

Dual Standards

UL and CSA have markings available that indicate approvals meet standards of their “non-home” country.

- The cUL mark indicates the product has been tested to meet Canadian Standards by the UL organization.
- The cCSAus mark indicates the product has been tested to meet USA standards by CSA.

NEMA Type Designation

	1	3/3R	4	4X	12/13
Application	Commercial Junction Box Switch Box Pull Box Service & Utility Box	Commercial Weather Proof Meter Cabinet Utility Box	Industrial/ Watertight Electrical Hydraulic or Pneumatic Controls Junction/Terminal Wiring Enclosures Operator Interface/ Consoles	Industrial/ Watertight Corrosion Resistant Electrical Hydraulic or Pneumatic Controls Junction/Terminal Wiring Enclosures Operator Interface/ Consoles with Corrosion Resistant Properties	Industrial Oil & Dust Tight Electrical Hydraulic or Pneumatic Controls Junction/Terminal Wiring Enclosures Operator Interface/ Consoles
Hammond Product Series	N1J N1A CSKO CS CHKO 1416 1439 1420 N1W	C3R EJ 1414N4 EN4SD	EJ 1414N4 EN4SD 1418N4 1422N4	EJ...SS 1414N4SS 304/316 EN4SD...SS 304/316 1418N4SS 304/316 1422N4SS 304 PJU P JW PHW PW PB PJFS 1554	EJ 1414 EN4SD 1418 1422 1436 1438 2UD 2UHD Series 2000 Consoles IME
National Electrical Manufacturers Association (NEMA Standard 250)	Enclosures constructed for indoor use to provide a degree of protection to personnel against incidental contact with the enclosed equipment to provide a degree of protection against falling dirt.	Enclosures constructed for either indoor or outdoor use to provide a degree of protection to personnel against incidental contact with enclosed equipment to provide a degree of protection against falling dirt, rain, sleet, snow and windblown dust and that will be undamaged by the external formation of ice on the enclosure.	Enclosures constructed for either indoor or outdoor use to provide a degree of protection to personnel against incidental contact with the enclosed equipment: to provide a degree of protection against falling dirt, rain, sleet, snow, windblown dust, splashing water, hose directed water, and hose-directed water; and that will be undamaged by the external formation of ice on the enclosure.	Enclosures constructed for either indoor or outdoor use to provide a degree of protection to personnel against incidental contact with the enclosed equipment; to provide a degree of protection against falling dirt, rain, sleet, snow, windblown dust, splashing water, hose-directed water, and corrosion; and that will be undamaged by the external formation of ice on the enclosure.	Enclosures constructed (without knockouts) for indoor use to provide a degree of protection to personnel against incidental contact with the enclosed equipment; to provide a degree of protection against falling dirt; against circulating dust, lint and fiber flyings; and against dripping and light splashing of liquids.
Underwriters Laboratories Inc. (UL 50 and UL 508)	Indoor use primarily to provide a degree of protection against limited amount of falling dirt.	Outdoor use primarily to provide a degree of protection against rain, sleet, windblown dust, and damage from external ice formation.	Indoor or outdoor use primarily to provide a degree of protection against windblown dust, and rain, splashing water, hose-directed water; and damage from external ice formation.	Indoor or outdoor use primarily to provide a degree of protection against corrosion, windblown dust and rain, splashing water, hose-directed water; and damage from external ice formation.	Indoor use primarily to provide a degree of protection against circulating dust, falling dirt, and dripping non-corrosive liquids.
Canadian Standards Association (Standard C22.2, Nos. 14, 40 and 94)	General purpose enclosure in ordinary locations.	An enclosure for either indoor or outdoor use, constructed so as to provide a degree of protection against rain, snow, and windblown dust; undamaged by the external formation of ice on the enclosure.	An enclosure for either indoor or outdoor use, constructed so as to provide a degree of protection against rain, snow, windblown dust, splashing and hose-directed water; undamaged by the external formation of ice on the enclosure.	An enclosure for either indoor or outdoor use, constructed so as to provide a degree of protection against rain, snow, windblown dust, splashing and hose-directed water; undamaged by the external formation of ice on the enclosure; resists corrosion.	An enclosure for indoor use, constructed so as to provide a degree of protection against circulating and settling dust and lint, fibre flyings; dripping and light splashing of non-corrosive liquids; not provided with knockouts.

Protection Rating - Quick Selection Guide

Provides a degree of protection against:	Type 1	Type 3R	Type 12	Type 13	Type 4	Type 4X
Contact w/ Enclosed Equipment	✓	✓	✓	✓	✓	✓
Falling Dirt	✓	✓	✓	✓	✓	✓
Falling & Lightly Splashing water	✗	✓	✓	✓	✓	✓
Dust	✗	✗	✓	✓	✓	✓
Oil & Coolant	✗	✗	✗	✓	✗	✗
Sleet & Ice	✗	✓	✗	✗	✗	✗
Splashing Water & Hose-Down	✗	✗	✗	✗	✓	✓
Corrosives	✗	✗	✗	✗	✗	✓
NEMA to IEC Cross Reference*	IP20	IP22	IP54	IP54	IP66	IP66

* This cross reference is an approximation of NEMA and IEC classifications for reference only. Please consult the appropriate JIC agencies for requirements and test qualifications for complete information.

Industry and the Products they use

The following is a list of those industries with the enclosures most commonly used by them.

Industry	Examples of Products Used
Utilities, Municipalities (water/waste water)	Industrial Enclosures, Non Metallic NEMA 12 & 4X
Saw Mills, Pulp & Paper, Mining	Industrial Disconnect Freestanding, Corrosion Resistant
Farm, Irrigation Systems	Corrosion Resistant, Non Metallic NEMA 4X
Transportation Industries	Industrial Enclosures, Aluminum NEMA 12 & 4
Marine, Naval, Canadian Forces	Industrial, Freestanding NEMA 4X & 4, Non Metallic & Stainless Steel
General Industries	Industrial Modular Operator Interface
Process Industries (oil, chemical, food processing)	Industrial Corrosion Resistant, 316 Stainless Steel



Corrosion Protection - Mild Steel/Powder Coat

Users of older Hammond Manufacturing catalogs will have noticed a change to the ratings noted for Type 4 painted mild steel enclosures. Previously, Hammond catalogs have shown that these enclosures also carried the Type 4X designation, but this is no longer noted in the catalog. There has been NO CHANGE WHATSOEVER to the quality of the Hammond paint finish. Hammond has removed the 4X approval from the catalog only to avoid misapplication of painted steel enclosures. The testing criteria for Type 4X is not as rigorous as many users may assume.

It is important for users to understand the NEMA 4/4X rating. In response to concern about the costs of corrosion, the Underwriters' Laboratory (UL) and the National Electrical Manufacturers' Association (NEMA) have developed a rating system for electrical enclosures, stipulating that certain minimum conditions of corrosion resistance be met.

Material tested to UL1332 (type 4 protective coating) is prerequisite to a type 4X salt spray test. The NEMA 4X rating is applied to material that has met, under laboratory conditions, a six hundred hour salt spray with no worse pitting than that exhibited on a Type 304 Stainless sample run at the same time. This rating, however, does not test for corrosion resistance beyond this, or with chemicals other than salt.

Corrosion Resistance of Various Enclosure Materials*

		Suitability		
		Limited	Satisfactory	High
Material Type	Acids	Aluminium	Fiberglass Steel - Powder Paint	Stainless Steel Type 316 Stainless Steel Type 304
	Alkalies	Steel - Powder Paint Aluminium	Fiberglass	Stainless Steel Type 316 Stainless Steel Type 304
	Solvents			Stainless Steel Type 316 Stainless Steel Type 304 Fiberglass Aluminium Steel Powder Painted

Acids: Hydrochloric acid, nitric acid, sulphuric acid, acetic acid, magnesium, chloride, sea water

Alkalies: Sodium hydroxide, potassium hydroxide, calcium hydroxide, ammonia, pyridine, hydroxylamine, methylamine

Solvents: Acetone, ethyl alcohol, lacquer thinner, methylene chloride, mineral spirits, turpentine, toluene, unleaded gasoline, xylene

* This chart provides a quick reference but does not address material concentration levels or other environmental impacts. For more detailed information,

Suggested Applications for Corrosion Resistant Enclosures

Material Type	Hammond NEMA Rating	Suggested Application
Stainless Steel Type 304	4X	Indoor/outdoor applications. Ideal for hose-down and wet areas (eg. food processing, water treatment, dairies, breweries, etc.)
Stainless Steel Type 316	4X	Indoor/outdoor applications. Ideal for most environments, especially marine.
Aluminum	4	Indoor/outdoor applications. Ideal for environments containing solvents, petrochemicals, some acids and most sulfates and nitrates. Light weight provides for easier handling.
Fiberglass Reinforced Polyester	4X	Indoor/outdoor applications. Ideal for continually wet, cold or salty environments. Also useful in solvent or chemical laden areas. Strong resistance to heat, dilute acids and bases, impact, fire and outdoor exposure.

Pre-Treatment and Paint Process

Hammond offers a number of standard colors including ASA 61 gray, RAL 7035 and panel white. The ultra durable powder paint is applied to a multi-staged washing, rinsing and phosphating undercoating. Hammond standard finishes can be re-painted and detailed recoating information is published in catalogs and also included with insert sheets shipped with the product.

Hammond has established, documented, implemented, and maintained a quality management system and has continually improved its effectiveness in accordance with the requirements of the ISO 9001:2000 International Standard.

Process	Function
Wash & Rinsing	Cleaning solution aids rinsing agents, prepares surface for conversion coatings
Phosphate Coating	Corrosion protection agent plus surface prep for superior paint adhesion
Powder Coating	Electrostatically applied for uniform coverage on all surfaces edges and recessed areas
Bake Cycle	Baked at 400°F



Wash, Rinsing



Phosphate Coating Line



Powder Painting



Baking

Powder Coating Reference Chart

The majority of enclosure suppliers, including Hammond, utilize polyester powder paint in their manufacturing process.

Properties	Polyester TGIC*	Hybrid Polyester	Polyurethane	Epoxy
Outdoor Weathering	Excellent	Fair	Good	Fair
Flexibility	Excellent	Good	Good	Good
Adhesion	Excellent	Excellent	Excellent	Excellent
Chemical Resistance	Good	Good	Good	Good/Excellent
Solvent Resistance	Good	Good	Good	Excellent
Hardness - Scratch Resistance	Good	Good	Good	Excellent

*Hammond Powder Coating

The performance of the various paints listed above can change and is dependent on the variety and effects of the different acids and solvents used.

Two Design Styles

The application or use normally decides the style. For example, if frequent opening is required, the new 1/4 turn contemporary design is faster and easier than removing the compression clamps. If the application demands heavy equipment mounted to the doors or large cutouts that weaken the door structure, a heavy duty traditional style is recommended. Hammond offers a variety of both Traditional and Euro/Contemporary designs with various NEMA ratings, material types and features.

Traditional Design

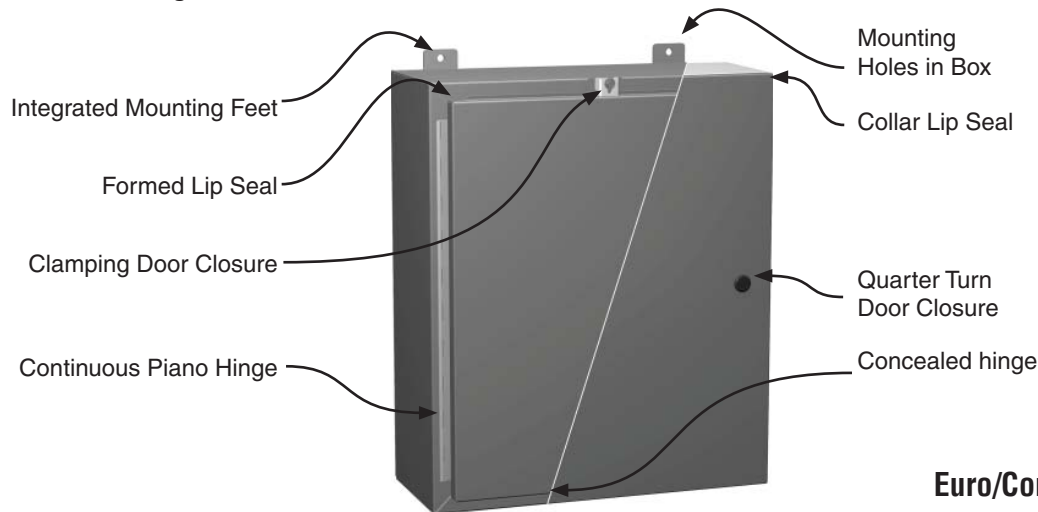
Traditional design is generally heavy duty or severe environment conditions.

Euro or Contemporary Design

Euro/Contemporary design is generally used for appearance, ease of entry or for use with modular accessories.

1418 Series

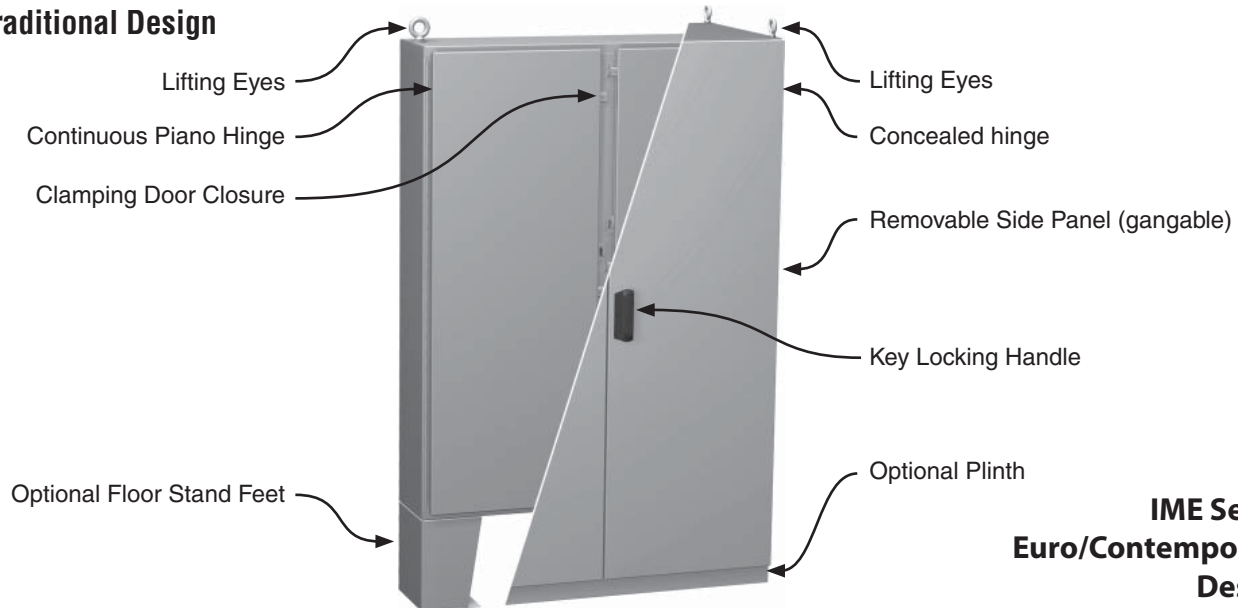
Traditional Design



Eclipse Series Euro/Contemporary Design

1422 Series

Traditional Design



IME Series Euro/Contemporary Design

Features and Benefits of Enclosure Types

Features	Traditional	Euro/Contemporary
Enclosure Types	Wallmounts, Floormounts, Freestanding	Wallmounts, Floormount, Modular
NEMA Rating	Type 12, 4 & 4X	Type 12, 4 & 4X
Material Type	Mild Steel, SS, Non-metallic	Mild Steel, SS, Non-metallic
Finish	Mild Steel ASA 61 Gray exterior White interior Stainless Steel - brushed Non-Metallic - Gray	Mild Steel ASA 61 Gray exterior RAL 7035 interior/exterior Stainless Steel - brushed Non-Metallic - Medium Gray
Hinges	Continuous piano hinge Advantage - greater strength	Concealed Hinge Advantage - easily removable
Door Closure	Clamps, screws or handle Advantage - maximum surface area	Quarter Turn - 2 or 3 Point handle Advantage - easily accessible entry
Padlocking	Comes standard on enclosure	Accessory Padlock Adaptor available
Mounting Options	Integrated Mounting Feet	Holes through box or optional feet
Lip Construction	Flat or formed lip seal	Collar lip seal
Inner Panel	White inner panel included	White or galvanized inner panel available as an accessory.*

* Eclipse Junior Series includes a galvanized inner panel. IME Series includes white inner panel.

Traditional Style



1422 Series

1414N4PHSS
Series

1418N4SS
Series

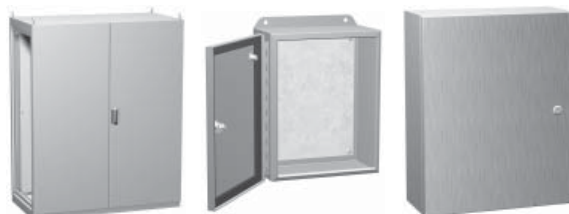


1418
Freestanding
Series



UHD Disconnect
Series

Euro/Contemporary Style



IME Series

Eclipse Junior

Eclipse Stainless
Steel Series



PJU Series



IFMD Series

Writing the Enclosure Specification

This section is designed to provide specification writing guidelines.
The following pages contain:

Step #1 - Specifying the Manufacturer page 12

Describes why it is important to specify manufacturers.

Step #2 - Generic Description page 13

The generic description templates lay out the basic features generally noted on an enclosure specification.

Step #3 - Detailed Description..... page 14

The detailed description templates illustrate the specific product details the designer expects.
Traditional and contemporary details are documented for reference.

Modification Information..... page 20

When customers require very specific designs, many manufacturers, including Hammond, offer modification services of their standard product.

Specifying Manufacturer

Specifying catalog numbers ensure certain features are maintained, or at least illustrated, for those quoting and supplying the product. This also establishes the quality grade from one of the manufacturers being named that could be transferred through to other pre-qualified manufacturers who you deem of equal stature.

Acceptable Manufacturers are:

1. Hammond Manufacturing
2. ...
3. ...

Generic Description Templates

1. Commercial NEMA Type 1 Enclosures - Junction Boxes, Pull Boxes, Splitter Boxes and Troughs

Junction, pull and switch boxes for general purpose, indoor commercial use:

- Must carry CSA label and meet NEMA/EEMAC classification
- Formed and spot welded from 12, 14 or 16 gauge steel
- Screw cover or hinged cover
- Finished in ASA 61 gray powder coating

Splitter boxes and troughs for indoor distribution of up to 600 amp service:

- Must carry CSA, UL or cUL label and meet NEMA/EEMAC classification
- Accommodates either 3 or 4 wires
- Formed and spot welded from 14 or 16 gauge steel, including factory installed splitter blocks
- Finished in ASA 61 gray powder coating

Generic Description Templates...cont'd

2. Commercial Outdoor NEMA Type 3R - Enclosures

General purpose outdoor enclosures are intended for surface mounting and will be of the following minimum standard:

- Must carry CSA, UL or cUL label and meet NEMA/EEMAC Type 4X classification (as required)
- Formed and welded from 12, 14 or 16 gauge steel (preferably galvanized steel)
- Finished in ASA 61 powder coating

3. Industrial NEMA Type 12, 4, 4X - Enclosures and Cabinets

Mild Steel Construction

Enclosures are intended for surface mounting and will be of the following minimum standard:

- Must carry CSA, UL or cUL label and meet NEMA/EEMAC Type 12 or 4 classification (as required)
- General construction shall be of sheet steel with all welds to be continuously finished smooth, free of all burrs, scale and imperfections
- Shall be stiffened to prevent any deformation or bowing during installation and after components are mounted
- All doors are to be formed flush fitting with all welds ground smooth
- Latching as specified with permanent gasket installed
- Supply print pocket for documentation
- Internal mounting panel

Stainless Steel Construction

Enclosures are intended for surface mounting and will be of the following minimum standard:

- Must carry CSA, UL or cUL label and meet NEMA/EEMAC Type 4X classification (as required)
- Unless otherwise specified material to be type 304 or 316 with a brushed finish, depending on application, with all hardware of the same or higher grade
- General construction shall be of sheet steel with all welds to be continuously finished smooth, free of all burrs, scale and imperfections
- Shall be stiffened to prevent any deformation or bowing during installation and after components are mounted
- All doors are to be formed flush fitting with all welds ground smooth, latching as specified with permanent gasket installed
- Supply print pocket for documentation
- Internal mounting panel

Fiberglass Re-inforced Polyester Construction

Enclosures are intended for surface mounting and will be of the following minimum standard:

- Must carry CSA, UL or cUL label and meet NEMA/EEMAC Type 4X classification (as required)
- Manufactured of fiberglass-reinforced polyester with all stainless steel hardware and padlocking provision
- Internal mounting panels will be supported by reinforced fittings

Detailed Description Templates

Small Wallmounts

Size Range - 4x4x3 inches (100x100x75mm) - 16x14x10 inches (400x355x250mm)

Manufacturer shall construct from 14 or 16 gauge sheet steel. All welds are to be continuous, finished smooth and free of all burrs, scales and imperfections. Body shall have integrated mounting feet with ground studs and rear mounting panel. Door shall be removable and have a permanently secured gasket with bonding studs.

	Traditional	Contemporary/Euro
Material & Finish	Mild steel finish in ASA 61 grey inside and out Stainless steel 304 or 316 brushed finish	Mild steel finish in ASA 61 grey inside and out Stainless steel 304 or 316 brushed finish
Ratings	NEMA 12 NEMA 4 NEMA 4X	NEMA 12 NEMA 4 NEMA 4X
Construction Details	Compression clamps or screws Flat lip seal	1/4 turn latch Collar lip seal
Hammond	1414PH Series 1414SC Series 1414 Series	Eclipse Junior Series (EJ)

Spec Tips:

- Traditional series for most severe conditions.
- Euro/Contemporary dual rating NEMA 12/4 offer great application flexibility

Accessories common for both styles:

- Terminal kits, Breather kits, Thermostats, Heaters

Additional accessories for Euro Style:

- Key and pad lock kits, galvanized inner panels



1414N4PH Series



1414SC Series



Eclipse Junior

Detailed Description Templates

Medium/Large Wallmounts - Single Door and Safety Disconnect

Size Range - 12x12x6 inches (300x300x150mm) - 60x36x20 inches (1530x915x500mm)

Manufacturer shall construct from 14-16 gauge sheet steel. All welds are to be continuous, finished smooth and free of all burrs, scales and imperfections. A ground stud shall be provided in the enclosure with a rear mounting panel. Doors shall be removable and have permanently secured gaskets with bonding studs.

	Traditional	Contemporary/Euro
Material & Finish	Mild steel finish in ANSI 61 grey outside, white inside Stainless steel 304 or 316 brushed finish	Mild steel - RAL 7035 or ANSI 61 grey inside and out Stainless steel 304 or 316 brushed finish
Ratings	NEMA 12 NEMA 4 NEMA 4X	NEMA 12 NEMA 4 NEMA 4X
Construction Details	Compression clamps or handles Piano hinge with removable pin Formed lip seal White inner panel Pad lock hasp Integrated mounting feet Gasket retainers	1/4 turn latch handles Concealed hinge and pin Collar lip seal White or galvanized inner panel Optional pad lock adaptor Optional mounting feet
Hammond	1418 Series 1418N4 Series 1418N4SS Series 1447S Disconnect Series 1447SN4 Disconnect Series 1447SN4SS Disconnect Series	Eclipse Series Eclipse Stainless Steel Series Eclipse Disconnect Series

Spec Tips:

- Traditional series offer greatest strength and weight capacity for the most severe conditions
- Euro/Contemporary offers more options like latching and handle combinations and dual NEMA 12/4 ratings.

Options:

- Material thickness upgrade on doors primarily
- Add stainless steel hinging to Type 12 enclosures
- 2 and 3 point latching systems
- Factory installed accessories

Accessories common for both styles:

- Door stop kits, Window kits, Air conditioners, Heaters, Filter fans, Thermostats, Literature pockets, Light kits, Drip shields

Additional accessories for Euro Style:

- Swing frames, Swing panels, Gland plates, DIN rail kits, Key, handle & pad lock accessories



1418J Series



Eclipse Series



1418N4 Series



1447S Disconnect Series

Detailed Description Templates

Two Door Enclosures (Wallmounts and Floor mounts)

Size Range - 24x42x8 inches (600x1060x200mm) - 72x72x24 inches (1820x1820x600mm)

Manufacturer shall construct from 12 - 14 gauge sheet steel. All welds to be continuous, finished smooth and free of all burrs, scales and imperfections. A ground stud shall be provided in the enclosure with rear mounting panel. Doors shall be removable and have permanently secured gaskets with bonding studs.

	Traditional	Contemporary/Euro
Material & Finish	Mild steel - ASA 61 grey outside, white inside Stainless steel 304 or 316 brushed finish	Mild steel - RAL 7035 or ASA 61 grey inside and out
Ratings	NEMA 12 NEMA 4 NEMA 4X	NEMA 12 NEMA 4
Construction Details	On NEMA 12 - 3 point key handle Piano hinge with removable pin Formed lip seal White inner panel Integrated mounting feet Lifting eyes (large units only)	On NEMA 12/4 - 3 point key handle Stainless Steel concealed hinge and pin Collar lip seal White or galvanized inner panel Optional mounting feet
Hammond	1422 Series (Wall or floor mount) 1422N4 Series (Wall or floor mount) 2UD Disconnect Series (Wall or floor mount) 2UDCP Disconnect Series (Wall or floor mount)	Eclipse Two Door Series (Wall mount)

Spec Tips:

- Traditional units support greater panel and door loads, especially in freestanding applications.
- Euro offers more options like latching and handle combinations along with dual NEMA 12/4 ratings

Options:

- Material thickness upgrade on doors primarily
- Add stainless steel hinges to type 12
- Change in handle type, key and pad lock options
- Factory installed accessories

Accessories common for both styles:

- Door stop kits, Window kits, Air conditioners, Heaters, Filter fans, Thermostats, Literature pockets, Light kits, Drip shields

Additional accessories for Euro Style:

- Gland plates, DIN rail kits, Pad lock accessories



1422 Floormount Series



1422 Wallmount Series



Eclipse Two Door Series



2UDCP Disconnect Series

Detailed Description Templates

Large Heavy Duty Single and Multi Door Free Standing Enclosures

Size Range 60x24x18 inches (1520x600x450mm) - 90x72x36 inches (2280x1820x910mm)

Manufacturer shall construct frame from 10-14 gauge sheet steel. All welds to be continuous, finished smooth and free from all burrs, scales and imperfections. A ground stud shall be provided in the enclosure with rear mounting panel. Doors shall be removable and have permanently secured gaskets with bonding studs.

	Traditional	Contemporary/Euro
Material & Finish	Mild steel - ASA 61 grey outside, white inside Stainless steel 304 or 316 brushed finish	Mild steel - RAL 7035 inside and out
Ratings	NEMA 12 NEMA 4 NEMA 4X	NEMA 12
Construction Details	On NEMA 12 - 3 point key handle Piano hinge with removable pin White inner panel Lifting eyes On NEMA 4 - Compression clamps Removable center post Pad lock hasp	3 point key handle Concealed hinge with removable pin White or galvanized inner panel Lifting eyes Not available
Hammond	1418 Series 1422MD UHD Disconnect Series UHDM Disconnect Series	IME Series IMET Series IPC Series IMFD Disconnect Series

Spec Tips:

- Traditional units support greatest weight and can be lifted into position without extra support.
- Euro provides 360 degree accessibility to internal construction plus easy modular sections for expansions.

Options:

- Material thickness upgrade on doors primarily
- Add stainless steel hinges
- Change in handle type, key and pad lock options
- Factory installed accessories

Accessories common for both styles:

- Door stop kits, Window kits, Air conditioners, Heaters, Filter fans, Thermostats, Literature pockets, Light kits, Drip shields, Disconnect adapter kits, Depth mounting panels

Additional accessories for Euro Style:

- Swing frames, Swing panels, Gland plates, DIN rail kits, Pad lock accessories



1418 Freestanding Series



UHD Disconnect Series



IME Series



IPC Series

Industrial Type 4X Wallmounts - Non-Metallic

Small Wallmounts

Size range 4x4x3 (100x100x75mm) - 16x14x10 (400x355x250mm)

	Traditional	Contemporary/Euro
Construction Details	Fiberglass Reinforced Polyester Exterior mounting feet Exterior mounting feet Latch, twist or Screw Cover Continuous piano hinge, removable pin Unpainted aluminum, fiberglass or white inner panel available	Fiberglass Reinforced Polyester Exterior mounting feet Screw Cover Optional non-metallic hinge Unpainted aluminum, fiberglass or white inner panel available
Finish	Gray	RAL 7032 or RAL 7035
Hammond	PJ Series	PB Series PJU Series

Medium/Large Wallmounts

Size range 12x12x6 (300x300x150mm) - 72x30x24 (1820x760x600mm)

	Traditional	Contemporary/Euro
Construction Details	Fiberglass Reinforced Polyester Exterior mounting feet Exterior mounting feet Compression clamps (twist type) Padlock provision\ Continuous piano hinge, removable pin White inner panel available	Fiberglass Reinforced Polyester Exterior mounting feet 1/4 turn latch Padlock adaptor available Concealed hinge, removable pin White or aluminum inner panel available
Finish	Gray	RAL 7032
Hammond	PJ Series PHW Series	PB Series PW Series



PJU - Clear Cover



PJU Series



PJ Series



PB Series



PHW Series



PW Series

Commercial Type 1

	Junction Box		Panel Enclosures	Splitter Box/Trough	Meter Cabinets
	Screw Cover	Hinge Cover			
Construction	Mild Steel 14, 16 ga.	Mild Steel 14,16 ga.	Mild Steel 14,16 ga.	Mild Steel 14,16 ga.	Mild Steel 14,16 ga.
Covers	Flat keyhole slots	Formed with 1/4 turn slot	Formed with 1/4 turn slot	Formed with screws provision for sealing wire	Padlocking Hasp
Conduit Entry	With/without K/Os	With K/Os	No K/Os	With K/Os	
Finish	ASA 61 Inside/out	ASA 61 Inside/out	ASA 61 Inside/out	ASA 61 Inside/out	ASA 61 Inside/out
Hammond	CSKO (with K/Os) CS (no K/Os)	CHKO	N1J 1420 N1A	CSB (box) CST (trough)	CMC



CSKO Series



CSB Series



CMC Series



N1J Series

Commercial Type 3R

	Junction Box Screw Cover	Panel Enclosures	
		Latched Hinge Cover	Screw Hinged Cover
Construction	Mild Steel 14,16 ga. (Galvanized preferred), overhanging rain hood	Mild Steel 14,16 ga. (Galvanized preferred), overhanging rain hood	Mild Steel 14,16 ga. (Galvanized preferred), overhanging rain hood
Covers	Formed with screw cover and padlocking hasp	Hinged, formed with padlockable flip hatch	Hinged, formed with screw cover and padlocking hasp
Conduit Entry	With K/Os	With K/Os	No K/Os
Finish	ASA 61 Inside/out	ASA 61 Inside/out	ASA 61 Inside/out
Hammond	C3R...SC	C3R...HCR	C3R...HCR



SC Series



HCR Latch



HCR Screw

Modification Services

When a standard enclosure isn't exactly what you need, Hammond can modify our designs for the ideal enclosure solution. Should you need some assistance specifying your enclosure, our experienced sales and design professionals will share their expertise to help determine which enclosure would best fit your needs. Why have Hammond modify your enclosure?



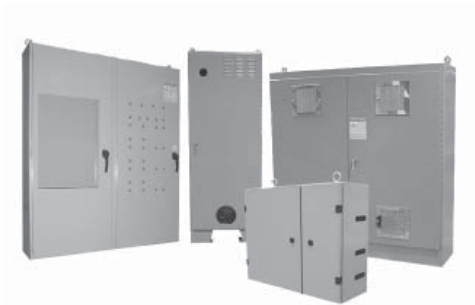
Wallmount Enclosures



Modular Freestanding Enclosures



*19" Rack Cabinets
Standard and Type 12*



Large Box Enclosures



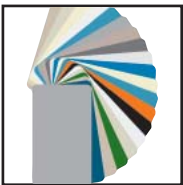
Modular Consoles

There are two good reasons - **quality** and **cost**.

Hammond is a name trusted for enclosure quality for many years. Our highly accurate laser work centers and CNC punches can guarantee the exact location and dimensions of your holes and cutouts. Our ultra-durable powder paint can be color matched to your specifications ensuring a factory quality paint finish every time.

Consider the true costs of modifying enclosures at your factory. When you add up prep time, layout, drilling, tapping, cutting, paint touch up, assembly and the extra product handling, you'll see the value in getting an enclosure from Hammond that's ready to load up.

Common Modifications



Paints

- Standard Colors
- Custom Colors



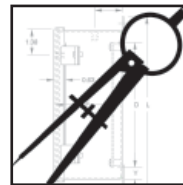
Holes & Cutouts

- Knockouts
- Punches



Mounting

- Studs
- Tapped Holes
- Mounting Struts



Construction Changes

- Dimension Changes
- Stiffeners



Accessories

- Windows
- Shelves
- Climate Control

Visit our Website - www.hammfg.com

Information at your finger tips

The web provides yet another option in collection product information. Our website is kept current and is being continually enhanced to add more useful functionality.

Information Available Online:

- Searchable Product Database
- Spec Sheet Downloads
- New Product Announcements
- Climate Control Sizing Downloads
- Engineer Drawing Downloads
- & more...

A new, simpler way to browse our website.

- Larger headings
- Larger and clearer images
- New E5 Catalog PDF Pages
- Updated Accessories pages
- New easy-to-read table format
- One-click access to DXF drawings

Contact Us:

For assistance on active projects, please contact your local specialist listed below.

CANADA:

WEST:

Jerry Grootveld
Tel: (604) 986-1446
Fax: (604) 986-6835
jgrootveld@hammfg.com

ONTARIO & ATLANTIC:

Bill Soule
Tel: (519) 822-2960 ext. 259
Fax: (519) 822-0715
bsoule@hammfg.com

QUEBEC:

Alain Perrault
Tel: (514) 343-9010
Fax: (514) 343-9941
aperrault@hammfg.com

USA:

NATIONAL:

Damon Accurso
Tel: (716) 630-7030
Fax: (716) 630-7042
daccurso@hammfg.com

GENERAL INQUIRIES:

For general questions in regards to Hammond products or requirements, please contact us at:

Email: sales@hammfg.com Tel: (519) 822-2960

Warranty Information

Hammond Product Warranty

All goods sold by HAMMOND MANUFACTURING COMPANY INC, are warranted to be free from defects in material and workmanship for a period of one year from date of shipment. This express warranty is in lieu of and excludes all other warranties whether expired or implied by operation of law or otherwise, including any warranty on the merchantability or fitness for a particular purpose. Defective goods may be returned to HAMMOND MANUFACTURING COMPANY INC. After inspection by the Company and upon receipt of definite shipping instructions, goods so returned will be replaced or repaired without charge, provided however, that HAMMOND MANUFACTURING COMPANY INC, shall not be liable for loss, damage or expense directly or indirectly resulting from the use of the product or from any other cause, the exclusive remedy against HAMMOND MANUFACTURING COMPANY INC, being to require the replacement or repair of defective products.

Note: By this warranty, HAMMOND MANUFACTURING COMPANY INC, is not obligated where products have been subject to careless handling, improper application, or faulty installation, and any obligation, guarantee or liability whatsoever except as stated above is hereby expressly disclaimed.



CANADA:
 Hammond Manufacturing Company Limited
 394 Edinburgh Road North
 Guelph , ON N1H 1E5
 Tel: (519) 822-2960
 Fax: (519) 822-7289

Les Fabrications Hammond (Quebec) Inc.
 4240 Rue Seré
 St. Laurent, Quebec H4T 1A6
 Tel: (514) 343-9010
 Fax: (514) 343-9941

USA:
 Hammond Manufacturing Company Inc.
 475 Cayuga Rd.
 Cheektowaga, NY 14225
 Tel: (716) 630-7030
 Fax: (716) 630-7042

UNITED KINGDOM:
 Hammond Electronics Limited
 1 Onslow Close
 Kingsland Business Park
 Basingstoke, Hampshire, RG24 8QL
 Tel: +44 1256 812812
 Fax: +44 1256 332249

AUSTRALIA:
 Hammond Electronics Pty. Limited
 11-13 Port Road
 Queenstown, SA 5014
 ABN 13 099 121 981
 Tel: +61 8 8240 2244
 Fax: +61 8 8240 2255

Want more information on Hammond Products?



Industrial & Commercial
 Electrical Enclosures

Industrial & Commercial
 Electrical Enclosures



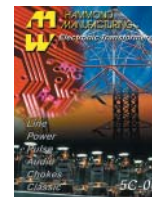
Electronic
 Racks & Cases



Power Bars &
 Surge Suppressors



Small Electronic
 Enclosures



Electronic
 Transformers

Fax to: For USA Requests:
 Hammond Manufacturing
 (716) 630-7042

For Canadian & International Requests:
 Hammond Manufacturing
 (519) 822-0715

Website: www.hammf.com

e-mail: sales@hammf.com

Please send me these catalogs:		Price Lists	
Catalog Name	Qty	USA	CDN
E5 Industrial & Commercial Electrical Enclosures			
Electronic Racks & Cases			
Small Electronic Enclosures			
Outlet Strips & Surge Suppressors			
Electronic Transformers			
Other — Please note if there are other products you are interested in:			

Name: _____

Company: _____

Street Address: _____

City, State/Province: _____

Zip/Postal Code: _____

E-mail address: _____

Telephone Number: () _____

Fax Number: () _____