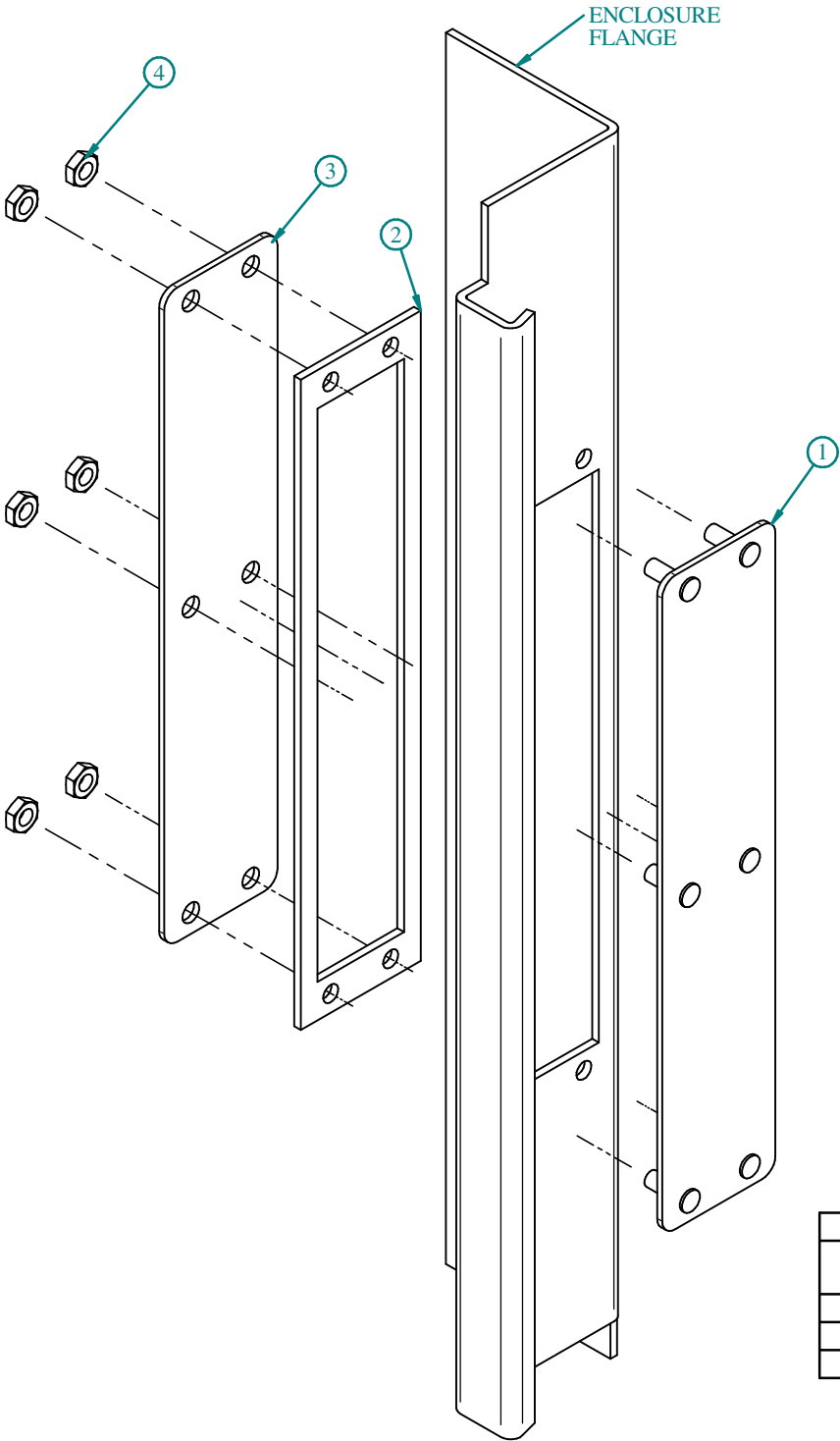


BPAK BLANK ADAPTOR PLATE

BUL10042
REV. B

ASSEMBLY INSTRUCTIONS FOR BPAK UNIVERSAL DISCONNECT



ASSEMBLY SEQUENCE

1.
INSERT FRONT PLATE WITH 1/4 - 20 STUDS INTO
DISCONNECT OPENING ON OUTSIDE FLANGE.



PLACE GASKET PLATE OVER STUDS ON INSIDE
OF DISCONNECT OPENING. GASKET MUST
PRESS AGAINST ENCLOSURE.

PLACE BACK PLATE OVER STUDS INSIDE.

TIGHTEN DOWN WITH 1/4 - 20 HEX NUTS ON
STUDS.

4.

	PARTS LIST	QTY.
1	FRONT PLATE C/W 1/4 - 20 STUDS (6)	1
2	GASKET PLATE	1
3	BACK PLATE	1
4	1/4 - 20 HEX NUT	6

TOOL BOX 	7/16 Open End Wrench 
--	--

**HAMMOND
MANUFACTURING™
ENCLOSURES**