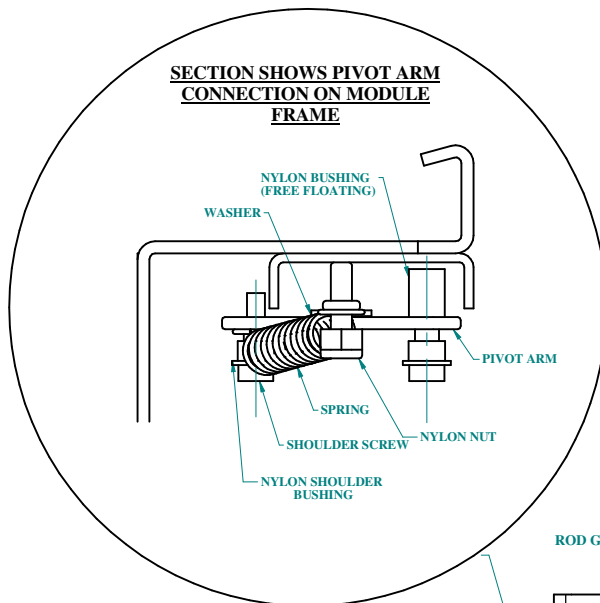


UHDM 2 DOOR MASTER - SERIES

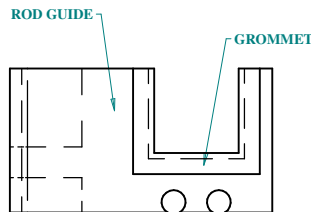
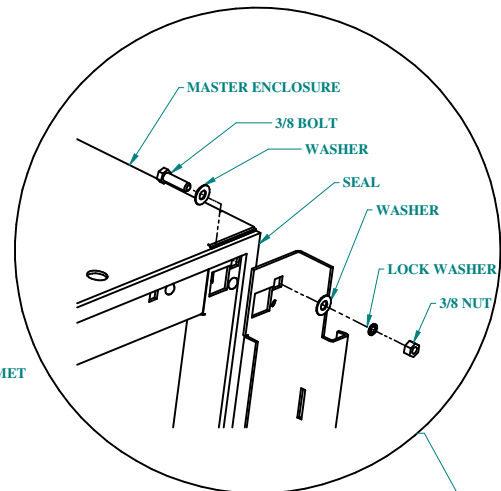
BUL10096
REV. C

ASSEMBLY INSTRUCTIONS FOR CONNECTING INTERLOCK INSTALLATION

SECTION SHOWS PIVOT ARM CONNECTION ON MODULE FRAME



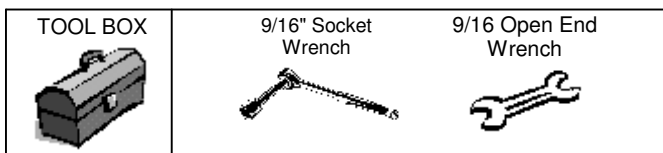
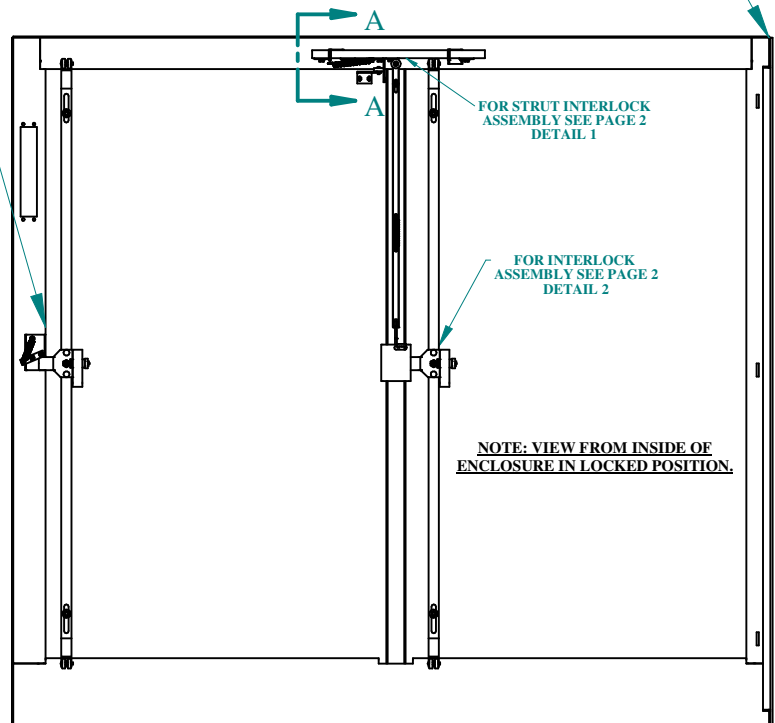
VIEW OF JOINING HARDWARE AND SEAL BETWEEN THE MODULES. SEE STEP D



SECTION A-A

NOTE FOR CONNECTING:

- POSITION THE MODULAR SECTIONS WITH THE MASTER MODULE ON THE RIGHT. SLAVE MODULES ARE MOUNTED IN ANY SEQUENCE (SINGLE OR DOUBLE DOOR) TO THE LEFT.
- SHIM UNDER THE MODULES FOR UNEVEN FLOOR AS REQUIRED TO ALIGN THE MATING HOLES.
- IF USED POSITION THE BARRIER PLATE SUCH THAT THE GASKET IS SEALING BOTH SIDES OF THE PLATE. *NOTE: THE BARRIER PLATE WILL COMPLETELY SEAL BETWEEN THE SECTION. THE MODULES THAT ARE BEYOND THE BARRIER MUST BE INTERLOCKED WITH THE MASTER DISCONNECT SWITCH. ALSO A CLEARANCE HOLE MUST BE MADE IN THE BARRIER FOR THE TRANSFER BAR TO BE INSERTED. USE MATING HOLE IN THE ENCLOSURE AS A TEMPLATE FOR THE SIZE AND LOCATION OF THE HOLE.
- BOLT BOTH MODULES TOGETHER USING A 3/8 CAPSCREW, TWO FLAT WASHERS, LOCK WASHERS AND A NUT ON EACH HOLE. TIGHTEN NUT TO A TORQUE OF 100 IN-LBS AS SHOWN ABOVE.
- SEAL OFF THE END OF THE LAST SLAVE UNIT WITH A FLAT END PLATE, OR A FORMED END COVER USING WASHER AND LOCKNUTS. TIGHTEN NUTS TO A TORQUE OF 50 IN-LBS.
- USING THE BONDING STUDS (PROVIDED INSIDE ALL OPENINGS AND ALL DOORS) TO ENSURE CONTINUITY OF THE GROUND BETWEEN ALL THE POINTS IN THE ENCLOSURE. ALSO A BONDING WIRE MUST BE USED BETWEEN THESE STUDS.



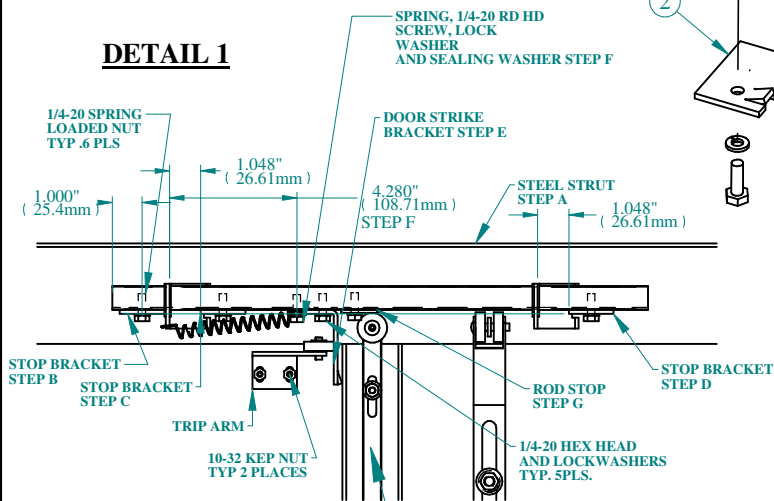
**HAMMOND
MANUFACTURING™
ENCLOSURES**

UHDM 2 DOOR MASTER - SERIES

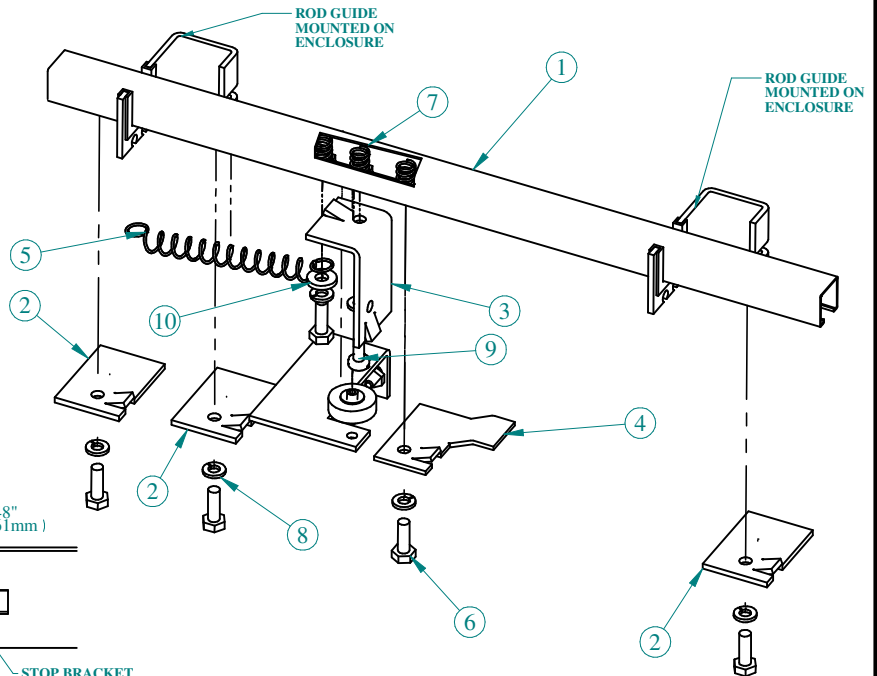
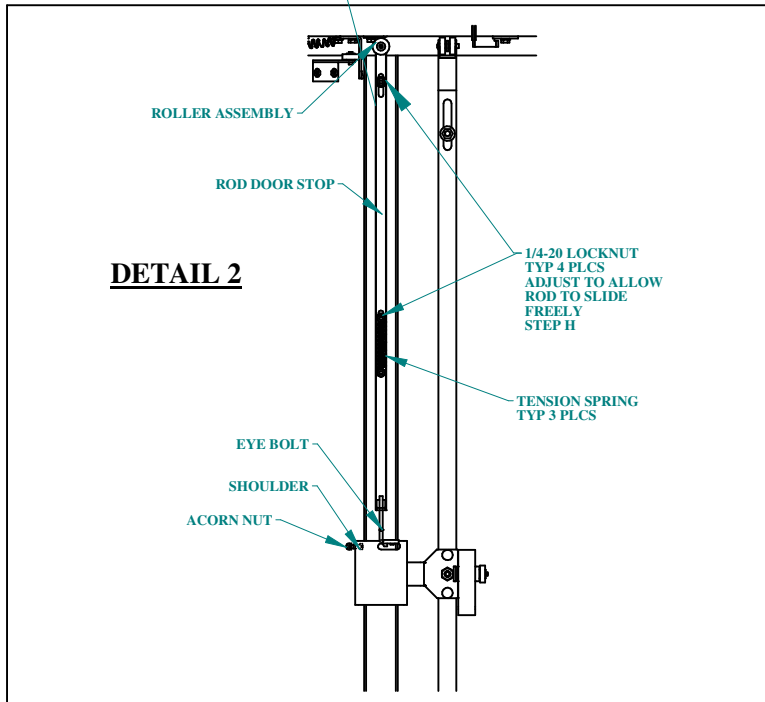
BUL10096
REV. C

ASSEMBLY INSTRUCTIONS FOR CONNECTING INTERLOCK INSTALLATION

DETAIL 1



DETAIL 2



INSTRUCTIONS:

- POSITION THE STEEL STRUT SO THAT IT IS CENTERED BETWEEN THE 2 CHANNEL SUPPORTS (DETAIL 1) AND ASSEMBLY SHOWN ABOVE.
- INSTALL STOP BRACKET TO STEEL STRUT, 1.00 IN FROM THE LEFT END AS INDICATED. USE 1/4-20 HEX SCREW, SPRING NUT AND LOCK WASHER.
- FASTEN SECOND STOP BRACKET 1.00 IN OVER FROM ROD GUIDE AS SHOWN. USE 1/4-20 HARDWARE.
- FASTEN THIRD STOP BRACKET 1.00 IN OVER FROM RIGHT HAND OF THE ROD GUIDE AS SHOWN. USE 1/4-20 HARDWARE.
- WITH THE MASTER DOOR FULLY CLOSED, OVER TIGHTEN THE SECOND AND THIRD STOP BRACKETS AGAINST THE ROD GUIDE. THEN INSTALL THE DOOR STRIKE BRACKET, TIGHTEN AGAINST THE TRIP ARM. USE 1/4-20 HARDWARE.
- FASTEN THE SPRING AS SHOWN. SLIP ONE END OVER THE HOOK ON THE ROD GUIDE AND FASTEN THE OTHER END TO THE STRUT. USE 1/4-20 RH SCREW, SPRING NUT, LOCK WASHER AND SEALING WASHER.
- FASTEN THE INTERLOCK ROD STOP AS SHOWN USING 1/4-20 SCREW, WASHER AND SPRING NUT.
- ADJUST THE LENGTH OF THE ROLLER ON THE ROD DOOR STOP ASSEMBLY TO ALLOW A PROPERLY FUNCTIONING INTERLOCK.

PART #	QTY.	DESCRIPTION
1	1	STEEL STRUT
2	3	STOP BRACKET
3	1	DOOR STRIKE BRACKET
4	1	INTERLOCK ROD STOP
5	1	SPRING
6	5	1/4-20 HEX HD SCREW
7	5	1/4-20 SPRING NUT
8	6	1/4 LOCK WASHER
9	1	1/4-20 RD HD SCREW
10	1	1/4 SEALING WASHER

TOOL BOX



1/4 Slot Head
Screw Driver



3/8, 7/16" Socket
Wrench



HAMMOND
MANUFACTURING™
ENCLOSURES