

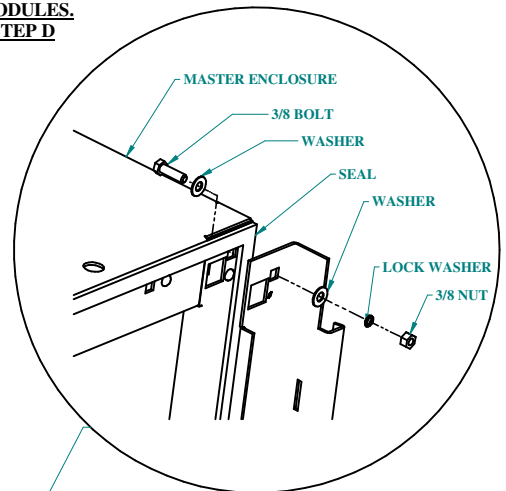
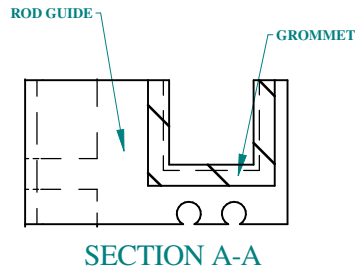
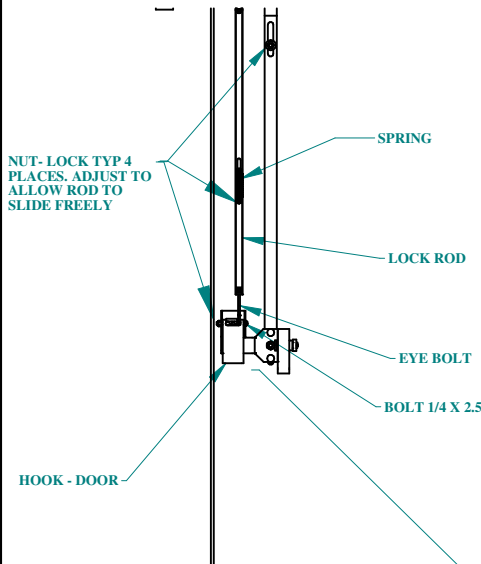
UHDM 1 DOOR SLAVE - SERIES

BUL10097

REV. C

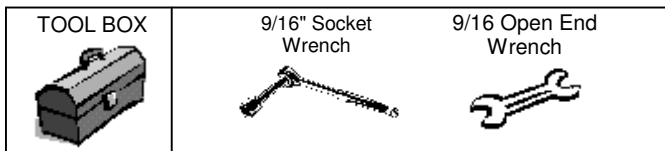
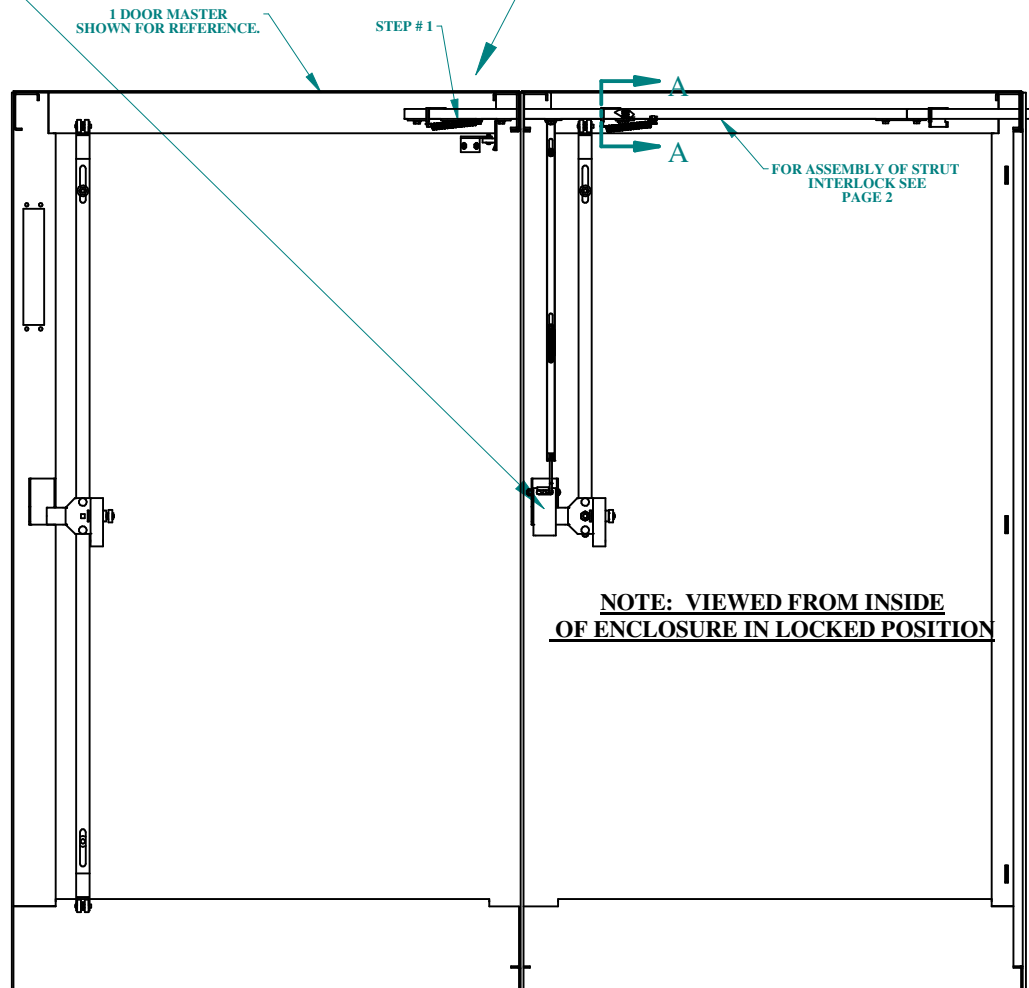
ASSEMBLY INSTRUCTIONS FOR CONNECTING INTERLOCK INSTALLATION UHDM 1 DOOR SLAVE

VIEW OF JOINING HARDWARE AND SEAL BETWEEN
THE MODULES.
SEE STEP D



NOTE CONNECTING:

- (A) POSITION THE MODULAR SECTIONS WITH THE MASTER MODULE ON THE RIGHT. SLAVE MODULES ARE MOUNTED IN ANY SEQUENCE(SINGLE OR DOUBLE DOOR) TO THE LEFT.
- (B) SHIM UNDER MODULES FOR UNEVEN FLOOR AS REQUIRED TO ALIGN MATING HOLES.
- (C) IF USED POSITION THE BARRIER PLATE SUCH THAT THE GASKET IS SEALING BOTH SIDES OF THE PLATE.* NOTE: THE BARRIER PLATE WILL COMPLETELY SEAL BETWEEN BOTH SECTIONS. IF THE MODULES ARE BEYOND THE BARRIER THEN IT MUST BE INTERLOCKED WITH THE MASTER DISCONNECT SWITCH, A CLEARANCE HOLE MUST BE MADE IN THE BARRIER FOR THE TRANSFER BAR TO BE INSERTED. USE THE MATING HOLE IN THE ENCLOSURE AS A TEMPLATE FOR THE SIZE AND LOCATION OF THE HOLE.
- (D) BOLT BOTH MODULES TOGETHER USING A 3/8 CAPSCREW, TWO FLAT WASHERS, LOCK WASHERS AND A NUT ON EACH HOLE. TIGHTEN TO A TORQUE OF 100 IN-LBS AS SHOWN ABOVE.
- (E) SEAL OFF THE END OF THE LAST SLAVE UNIT WITH A FLAT END PLATE, OR A FORMED END COVER USING A WASHER AND LOCKNUTS. TIGHTEN NUTS TO A TORQUE OF 50 IN-LBS.
- (F) USING BONDING STUDS (PROVIDED INSIDE ALL OPENINGS AND ALL DOORS) TO ENSURE CONTINUITY OF THE GROUND BETWEEN ALL THE POINTS IN THE ENCLOSURE. A BONDING WIRE MUST BE USED BETWEEN THESE SUTDS.



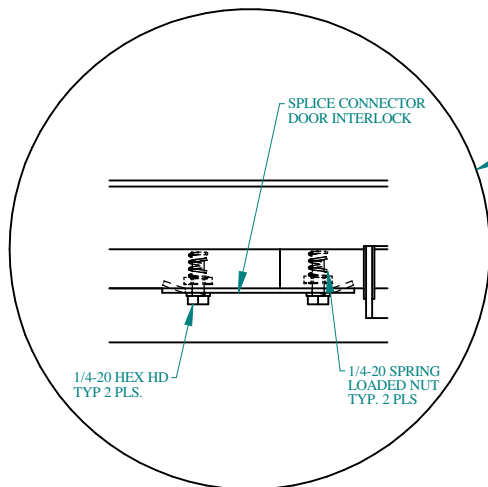
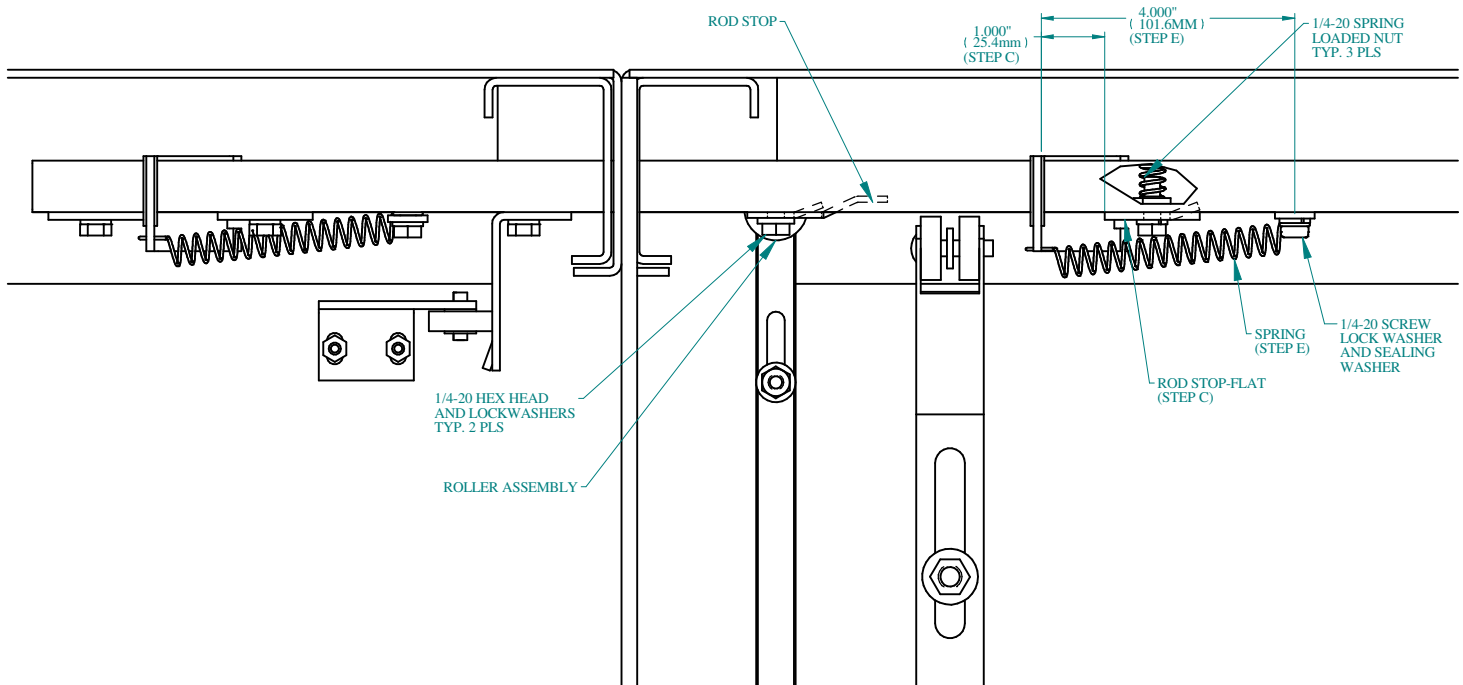
**HAMMOND
MANUFACTURING™
ENCLOSURES**

UHDM 1 DOOR SLAVE- SERIES

BUL10097

REV. C

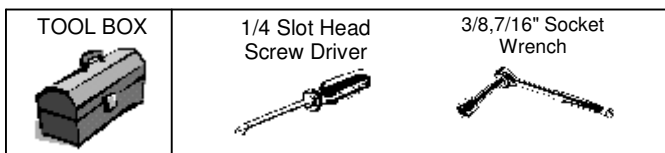
ASSEMBLY INSTRUCTIONS FOR CONNECTING INTERLOCK INSTALLATION UHDM 1 DOOR SLAVE



NOTE: (STEP B)
REQUIRED ONLY WHEN 1 DOOR
SLAVE
CONNECTED TO A 2 DOOR MASTER
OR
CONNECTED IN LINE WITH ANOTHER

NOTE: INTERLOCK

- (A) FOLLOW THE INSTRUCTIONS ENCLOSED IN THE MASTER UNIT TO WHICH THIS UNIT IS ATTACHED BEFORE ANY OF THE INSTALLATION WORK ON THE INTERLOCK IS STARTED.
- (B) IF THE ENCLOSURE IS ATTACHED TO A 2 DOOR MASTER OR ANOTHER SLAVE UNIT PULL THE STEEL STRUT FORWARD AND USE A SPLICE CONNECTOR AS SHOWN TO ATTACH IT ACCORDINGLY. IF SPLICE IS NOT REQUIRED DISCARD IT AND USE THE APPROPRIATE HARDWARE THAT BELONGS TO IT.
- (C) MAKE SURE THE MASTER DOOR ON THE MASTER UNIT IS FULLY CLOSED. WHEN CLOSED INSTALL ROD STOP-FLAT 1.00" OVER FROM THE ROD GUIDE AS SHOWN ABOVE.
- (D) NEXT, INSTALL THE ROD STOP OVER THE ROLLER ASSEMBLY AND THEN LOCK THE ROD WITH THE DOOR HOOK IN THE DEPRESSED POSITION.
- (E) INSTALL THE SPRING AS SHOWN ABOVE.
- (F) CYCLE THE UNIT TO ENSURE SLAVE DOOR CANNOT BE OPENED WITH MASTER DOOR IN THE LOCKED POSITION.



HAMMOND
MANUFACTURING™
ENCLOSURES