

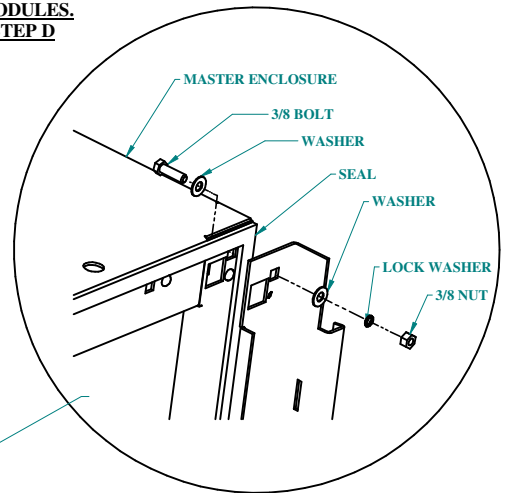
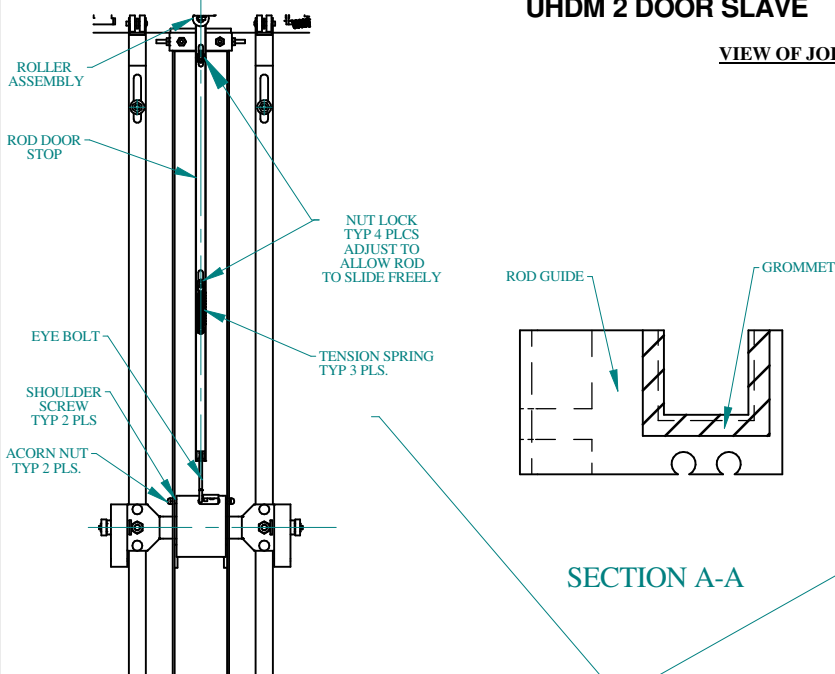
# UHDM 2 DOOR SLAVE - SERIES

BUL10098

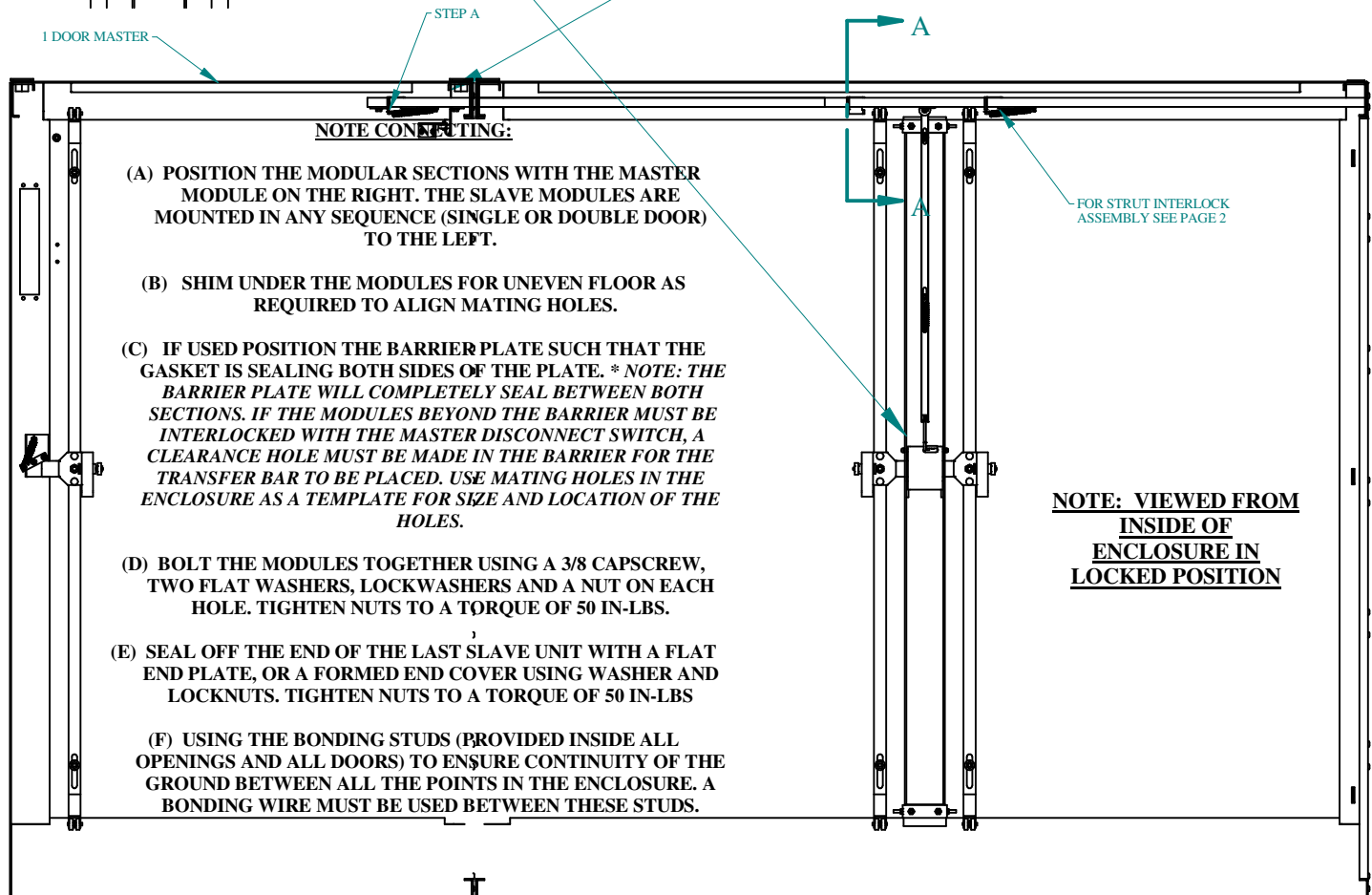
REV. C

## ASSEMBLY INSTRUCTIONS FOR CONNECTING INTERLOCK INSTALLATION UHDM 2 DOOR SLAVE

VIEW OF JOINING HARDWARE AND SEAL BETWEEN  
THE MODULES.  
SEE STEP D



### SECTION A-A



- (A) POSITION THE MODULAR SECTIONS WITH THE MASTER MODULE ON THE RIGHT. THE SLAVE MODULES ARE MOUNTED IN ANY SEQUENCE (SINGLE OR DOUBLE DOOR) TO THE LEFT.
- (B) SHIM UNDER THE MODULES FOR UNEVEN FLOOR AS REQUIRED TO ALIGN MATING HOLES.
- (C) IF USED POSITION THE BARRIER PLATE SUCH THAT THE GASKET IS SEALING BOTH SIDES OF THE PLATE. \* NOTE: THE BARRIER PLATE WILL COMPLETELY SEAL BETWEEN BOTH SECTIONS. IF THE MODULES BEYOND THE BARRIER MUST BE INTERLOCKED WITH THE MASTER DISCONNECT SWITCH, A CLEARANCE HOLE MUST BE MADE IN THE BARRIER FOR THE TRANSFER BAR TO BE PLACED. USE MATING HOLES IN THE ENCLOSURE AS A TEMPLATE FOR SIZE AND LOCATION OF THE HOLES.
- (D) BOLT THE MODULES TOGETHER USING A 3/8 CAPSCREW, TWO FLAT WASHERS, LOCKWASHERS AND A NUT ON EACH HOLE. TIGHTEN NUTS TO A TORQUE OF 50 IN-LBS.
- (E) SEAL OFF THE END OF THE LAST SLAVE UNIT WITH A FLAT END PLATE, OR A FORMED END COVER USING WASHER AND LOCKNUTS. TIGHTEN NUTS TO A TORQUE OF 50 IN-LBS
- (F) USING THE BONDING STUDS (PROVIDED INSIDE ALL OPENINGS AND ALL DOORS) TO ENSURE CONTINUITY OF THE GROUND BETWEEN ALL THE POINTS IN THE ENCLOSURE. A BONDING WIRE MUST BE USED BETWEEN THESE STUDS.

### TOOL BOX



9/16" Socket  
Wrench



9/16 Open End  
Wrench



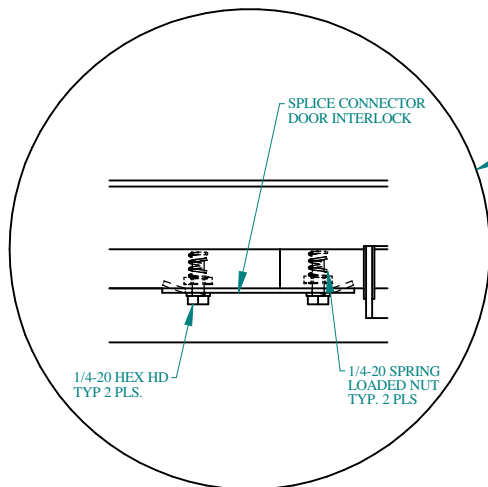
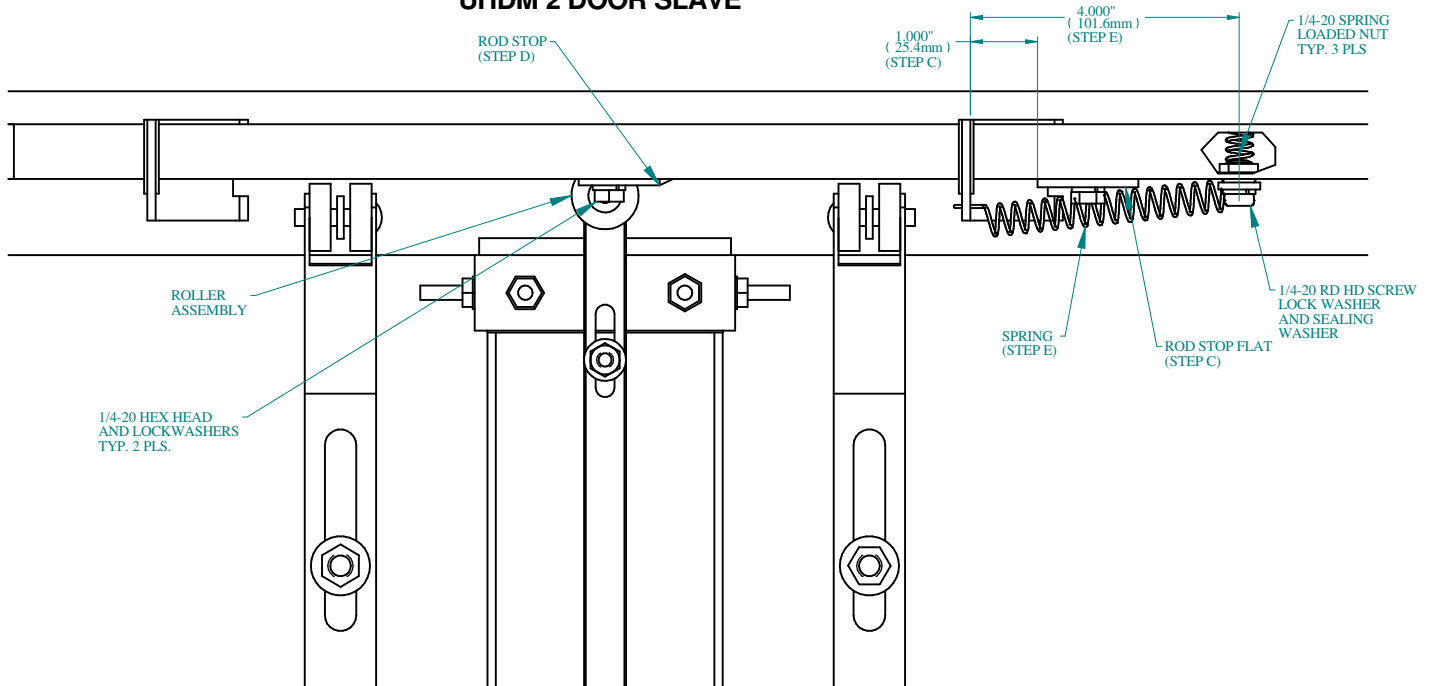
**HAMMOND  
MANUFACTURING™  
ENCLOSURES**

# UHDM 2 DOOR SLAVE- SERIES

BUL10098

REV. C

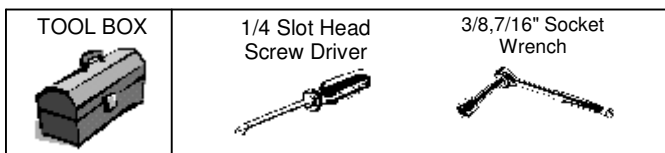
## ASSEMBLY INSTRUCTIONS FOR CONNECTING INTERLOCK INSTALLATION UHDM 2 DOOR SLAVE



**NOTE: (STEP B)**  
**REQUIRED ONLY WHEN 1 DOOR**  
**SLAVE**  
**CONNECTED TO A 2 DOOR MASTER**  
**OR**  
**CONNECTED IN LINE WITH ANOTHER**

### NOTE : INTERLOCK

- (A) FOLLOW THE INSTRUCTIONS ENCLOSED IN THE MASTER UNIT TO WHICH THIS UNIT IS ATTACHED TO BEFORE ANY INSTALLATION WORK ON THE INTERLOCK IS STARTED.
- (B) IF THE ENCLOSURE IS ATTACHED TO A 2 DOOR MASTER OR ANOTHER SLAVE UNIT PULL THE STEEL STRUT FORWARD AND USE A SPLICE CONNECTOR SHOWN TO ATTACH ACCORDINGLY. IF THE SPLICE IS NOT REQUIRED DISCARD IT AND THE APPROPRIATE HARDWARE.
- (C) WITH THE MASTER DOOR ON THE MASTER UNIT FULLY CLOSED. INSTALL THE ROD STOP FLAT 1.00" OVER FROM THE ROD GUIDE AS SHOWN ABOVE.
- (D) NEXT, INSTALL THE ROD STOP OVER THE ROLLER ASSEMBLY AND LOCK THE ROD WITH THE DOOR TO HOOK IN THE DEPRESSED POSITION.
- (E) INSTALL SPRING AS SHOWN ABOVE.
- (F) CYCLE THE UNIT TO ENSURE THAT THE SLAVE DOOR CANNOT BE OPENED WITH THE MASTER DOOR IN THE LOCKED POSITION.



**HAMMOND**  
**MANUFACTURING™**  
**ENCLOSURES**