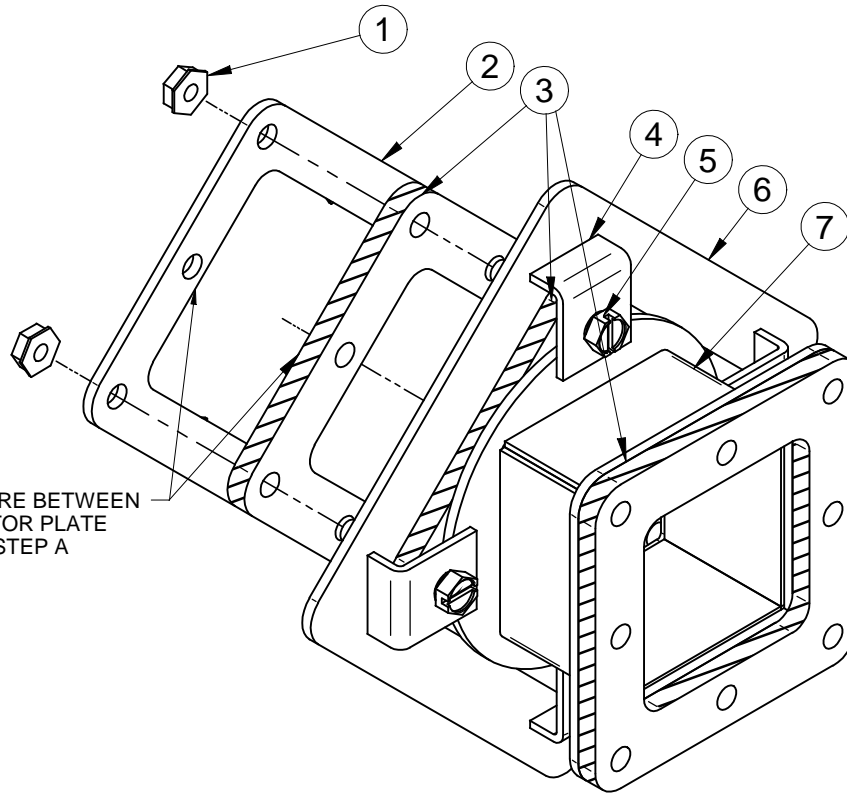


1487V - SERIES

BUL10117

REV. B

ASSEMBLY INSTRUCTIONS FOR 1487V SERIES SQUIVEL NIPPLE



CUTOUT IN THE ENCLOSURE BETWEEN
GASKET AND CONNECTOR PLATE
FOR 1487V1 SEE STEP A

ASSEMBLY INSTRUCTIONS

- A) FOR 1485V1 BOX ENTRY SERIES USE CONNECTOR PLATE (PART 2) AS A TEMPLATE. MARK, CUT CUTOUT HOLE AND DRILL .281" (7.1mm) DIA. HOLES. THIS IS TO BE DONE AT DESIRED POSITION IN ENCLOSURE.
- B) FOR 1485V2 STANDARD ENTRY. DISCARD CONNECTOR PLATE (PART 3) AND IGNORE STEP A.
- C) CONNECT THE 1485V1 KIT TO ENCLOSURE USING 1/4 - 20 SCREWS AND NUTS (PARTS 5 & 1) THROUGH CLAMP (PART 4), ADAPTER PLATE (PART 2), GASKET (PART 3), AND ENCLOSURE. DO NOT TIGHTEN COMPLETELY UNTIL STEP D IS COMPLETE. IF 1485V2 IS USED SEE STEP D.
- D) CONNECT THE BODY (PART 7) TO THE FLANGE ON THE MATING WIREWAY USING 1/4 - 20 X .75 HEX HD. SCREWS AND 1/4 - 20 KEP NUTS (PARTS 5 & 1) PROVIDED. IF 1485V2 IS USED IGNORE STEP C AND ASSEMBLE USING 1/4 - 20 HARDWARE THROUGH CLAMP (PART 4), ADAPTER PLATE (PART 2), GASKET (PART 3) AND MATING WIREWAY.
- E) ONCE THE SWIVEL BODY AND ADAPTER PLATES ARE ALIGNED TO MATING COMPONENTS. TIGHTEN THE CLAMPS DOWN TO FIX THE POSITION OF THE SQUIVEL ASSEMBLY.

PART #	QTY.	DESCRIPTION
1	5 OR 8	1/4 - 20 KEP NUT
2	1	CONNECTOR PLATE (1485V1)
3	3	SOLID FLANGE GASKET
4	4	CLAMPS
5	4 OR 7	1/4 - 20 X 3/4 HEX CAP SCREW
6	1	ADAPTER PLATE
7	1	1485 V SWIVEL NIPPLE BODY

