

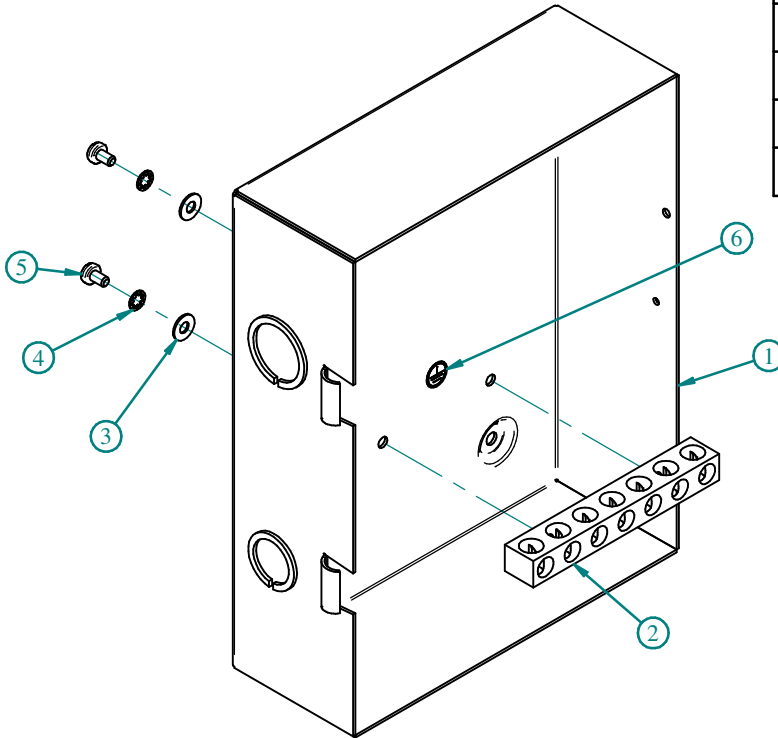
# CGK225 SERIES

BUL10289

REV. B

## ASSEMBLY INSTRUCTIONS FOR CGK225 - GROUND HARDWARE KIT

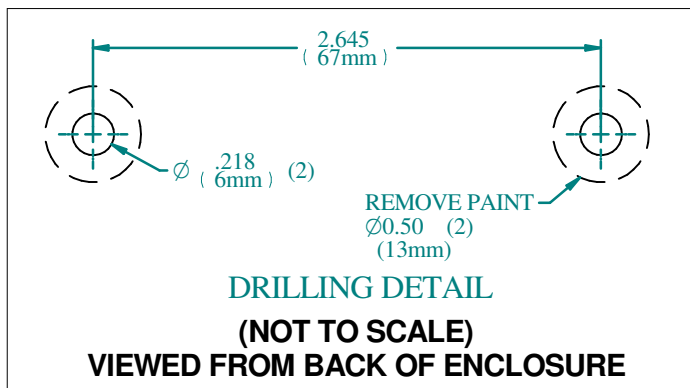
ITEM #	DESCRIPTION	QTY.
1	ENCLOSURE - BODY	1
2	GROUND LUG - 2/0-14 X (7) AL/CU	1
3	WASHER FLAT #10 ZP SAE	2
4	WASHER #10 ZP INTERNAL STAR	2
5	SCREW - 10-32X5/16 PH/SL PAN TYPE F ZP	2
6	GRD. SYMBOL LABEL	1



EXPLODED - ISOMETRIC VIEW

### ASSEMBLY INSTRUCTIONS

- Locate lug in desired location.
- Measure, mark, and drill body as per drilling detail. Drill (2) 0.218 (6mm) dia. holes.
- Remove paint from around 0.218 (6mm) dia. holes to allow for proper conductivity.
- Install lug using 10-32 hardware as shown in the ISOMETRIC VIEW.
- Install grounding label as shown. (ITEM #6)



**HAMMOND  
MANUFACTURING™**  
**ENCLOSURES**  
[www.hammondmfg.com](http://www.hammondmfg.com)

