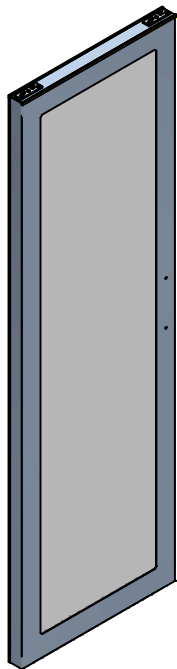
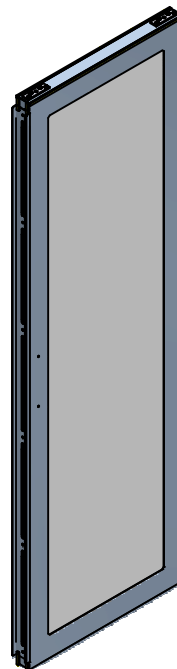


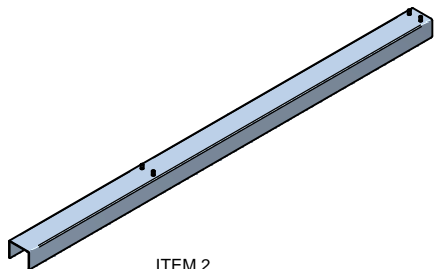
PARTS LIST



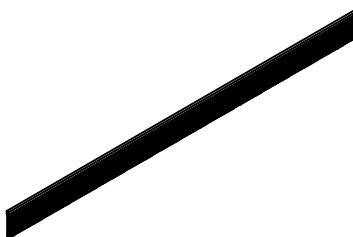
ITEM 1A
SLIDING DOOR ASSEMBLY (LH)
QTY 1



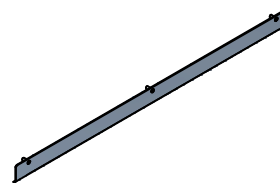
ITEM 1B
SLIDING DOOR ASSEMBLY (RH)
QTY 1



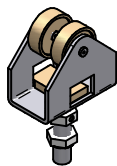
ITEM 2
DOOR GUIDE BRACKET
QTY 2



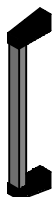
ITEM 3
BRUSH GASKET
QTY 2



ITEM 4
BRUSH GASKET CLAMP
QTY 2



ITEM 6
HANGER ASSEMBLY
QTY 4



ITEM 7
DOOR HANDLE
QTY 2



ITEM 8
M4 x 10 SCREW
QTY 4



ITEM 9
FENDER WASHER
QTY 4



ITEM 10
10-32 KEP NUT
QTY 8



ITEM 11
10-32 NYLON LOCK NUT
QTY 6

TOOL BOX



Flat Head
Screw Driver



9/16 Open
Ended Wrench



X 2

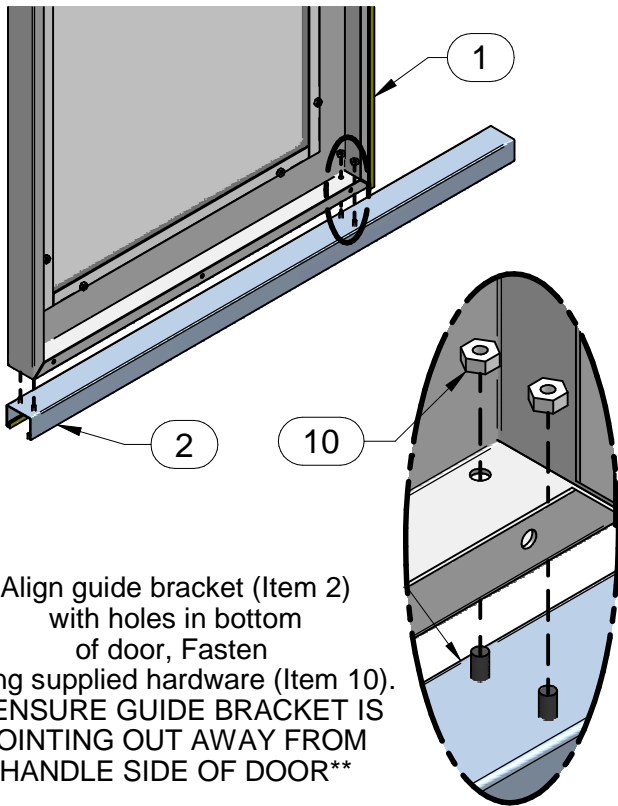
3/8 Socket
Driver



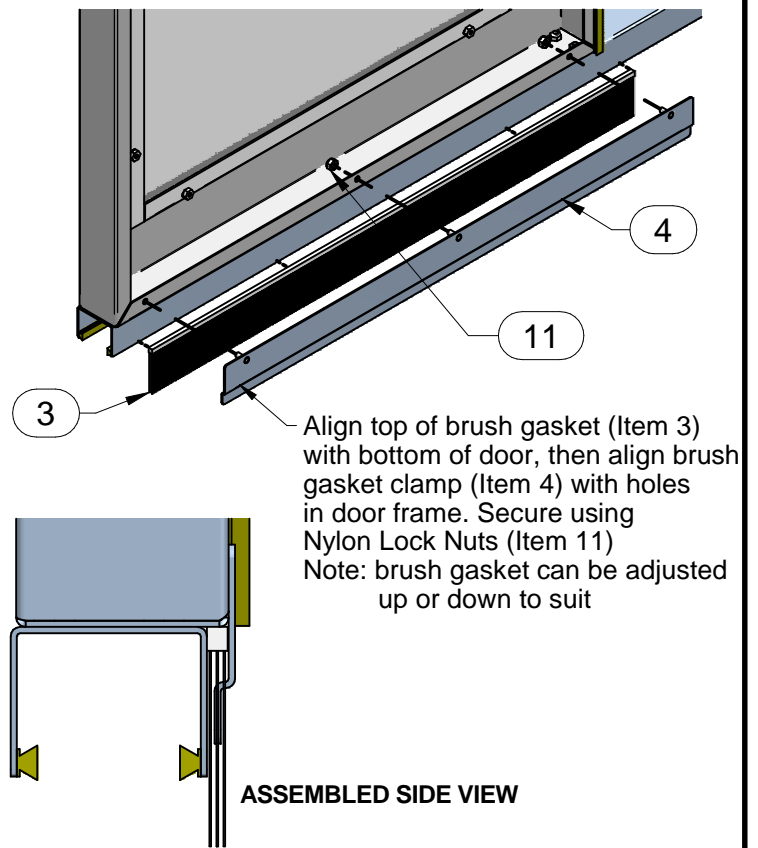
**HAMMOND
MANUFACTURING™**
ELECTRONICS GROUP

visit our website @ www.hammondmfg.com

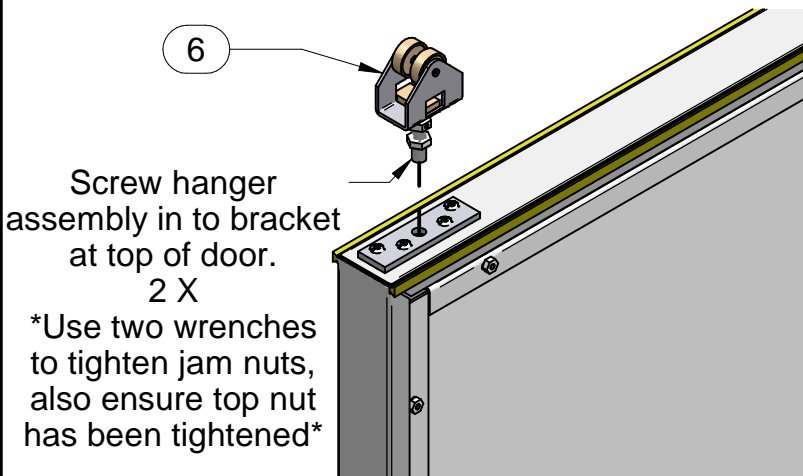
STEP 1: ASSEMBLE GUIDE BRACKET



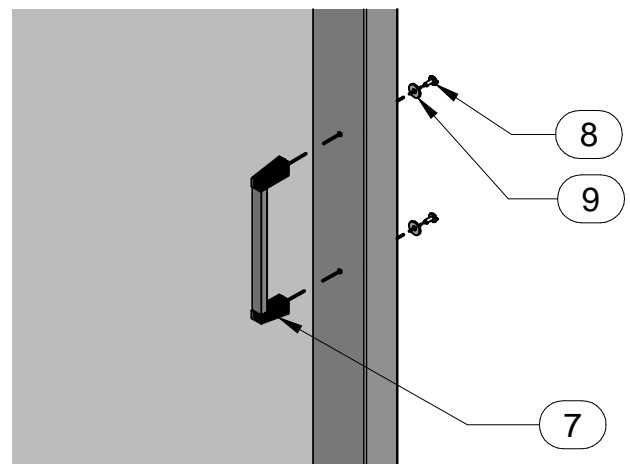
STEP 2: ATTACH BRUSH GASKET



STEP 3: ATTACH HANGER ASSEMBLY

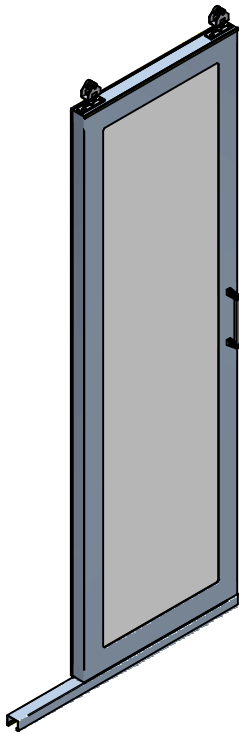


STEP 4: INSTALL DOOR HANDLE

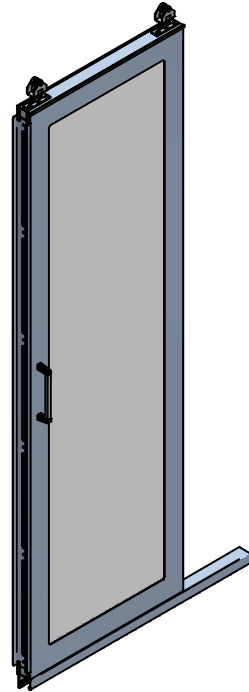


REPEAT FOR OTHER DOOR



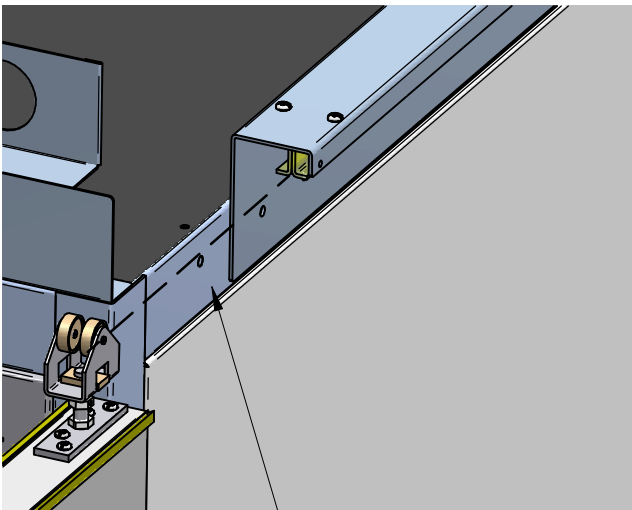


*DOORS FULLY
ASSEMBLED:*

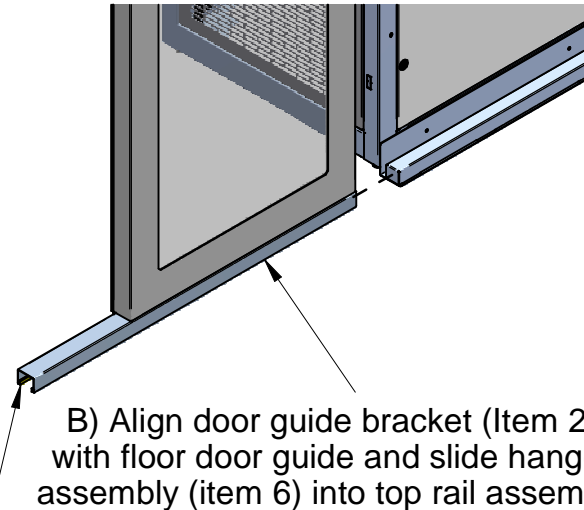


**DOOR ASSEMBLY COMPLETE.
HANG DOORS ON TOP DOOR GUIDE**

**STEP 5:
INSERT CENTRE STOP
AND HANG DOORS (BOTH SIDES)**



**A) Insert centre door stop
(Included with Rail Assembly)
and slide to middle of rail.
DO NOT TIGHTEN**



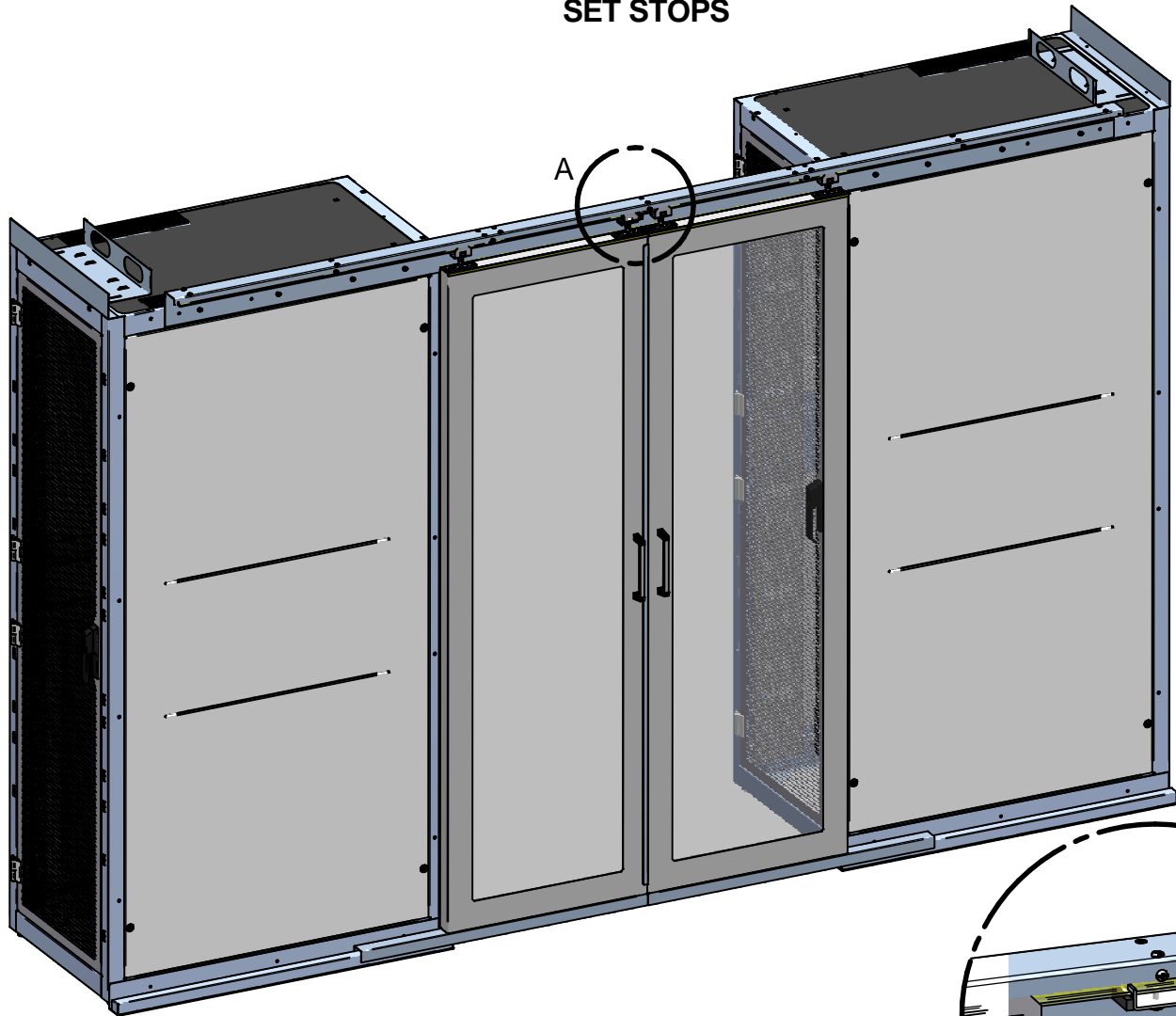
**B) Align door guide bracket (Item 2)
with floor door guide and slide hanger
assembly (item 6) into top rail assembly**

Bottom guide
facing away from
aisle. Both doors
Note: left door shown

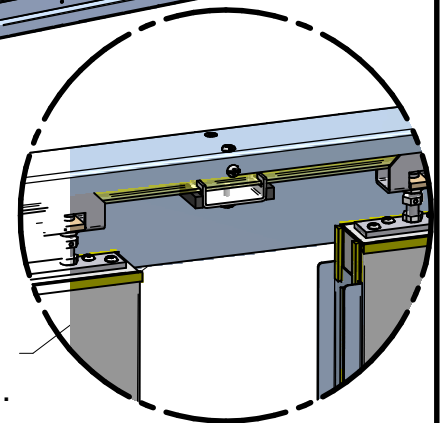
C) Repeat both sides and CENTER DOORS.



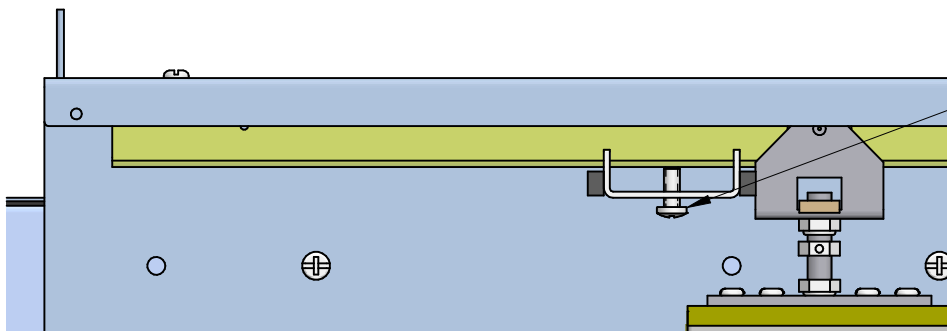
STEP 6: SET STOPS



A) Align centre door stop in middle position and tighten.



DETAIL A



B) Move doors to desired open position. Slide on end stops against door hangers and tighten end stops.

REFER TO BUL10462 TO COMPLETE INSTALL OF COVER PLATE AND END CAPS

