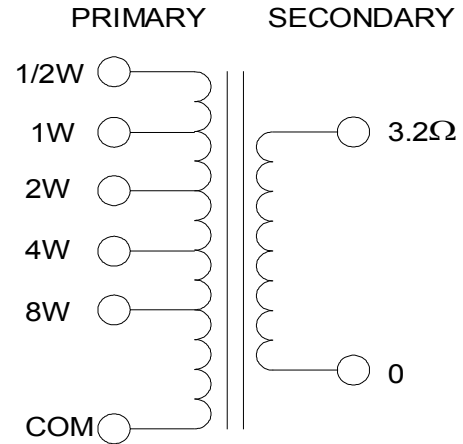


# 117E8

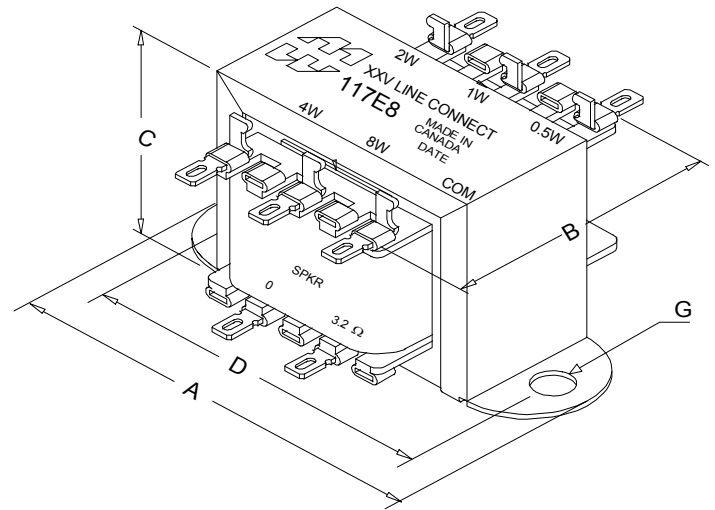
## 70 V LINE AUDIO TRANSFORMER

- Couple 3.2ohm speakers to 70volt line outputs of amplifiers.
- Up to 5 power tap levels available
- Primary taps marked in watts (no calculation necessary), to match speaker power.
- Frequency response 100Hz. to 10Khz. (1 db. reference @1 KHz.)
- Distortion is less than 2% @ 100 Hz. at maximum power.
- All models have solder lugs, also suitable for slip on jumper connections.
- Total power requirements of speakers should not exceed the rated power of each transformer or rated power of the amplifier.



## ELECTRICAL SPECIFICATIONS

Characteristics	Typical
System Voltage	70V
Power Rating	8 Watts
Insertion Loss	<2dB
<b>DCR</b>	
COM - ½ W	144Ω TYP
Input	0.16Ω TYP
<b>INDUCTANCE/IMPEDANCE</b>	
	@1.0 KHZ, 1V OC
COM - ½W	6.10H / 36.8KΩ
COM - 1W	3.16H / 18.8KΩ
COM-2W	1.65H / 9.79KΩ
COM-4W	900mH / 5.21KΩ
COM-8W	490mH / 2.78KΩ
Input	4.84mH / 21.8Ω
<b>LEAKAGE INDUCTANCE</b>	
	@1.0 KHZ, 1V SC
½W / 8W	290mH / 77mH
Dielectric Strength	500VRMS
Temperature Range	-40 To 105°C



Dimensions	
A	3.250" ±0.063
B	1.75" REF.
C	2.00" MAX.
D	2.813" ±0.063
G	0.187" ±0.015

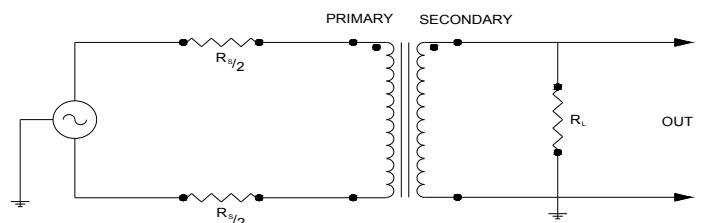
## TEST CONDITIONS:

Measurement instruments:  
 Hp4192a impedance analyzer Keithley 2002 DVM  
 D scope series iii audio analyzer Hp3456a DVM

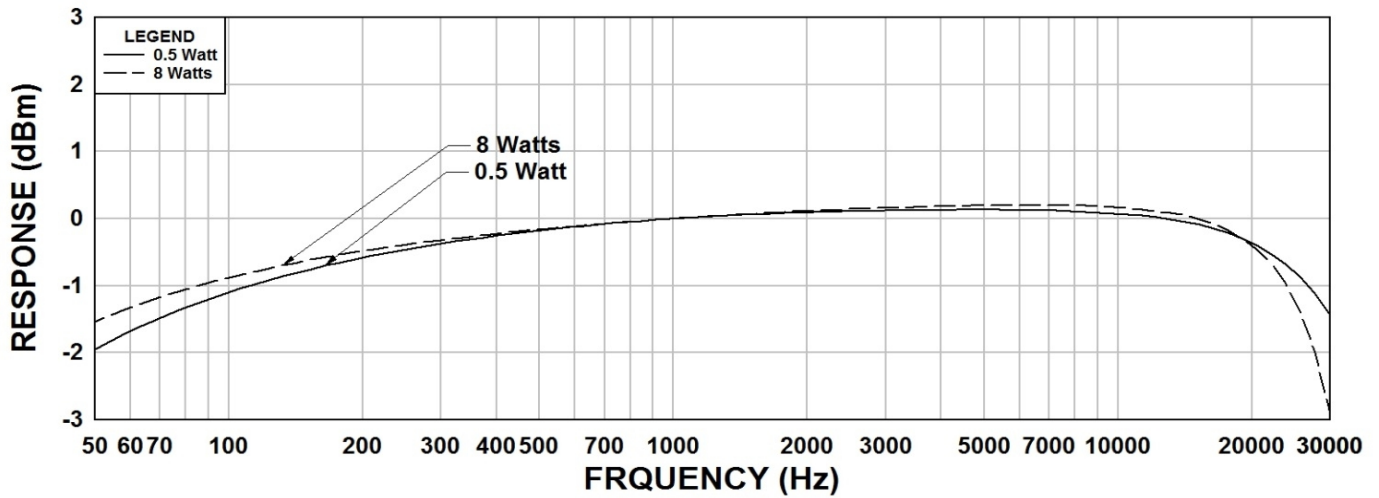
\* All graphs input level 27dBm.

\*\*The results are typical and are subject to normal manufacturing and electrical tolerances.

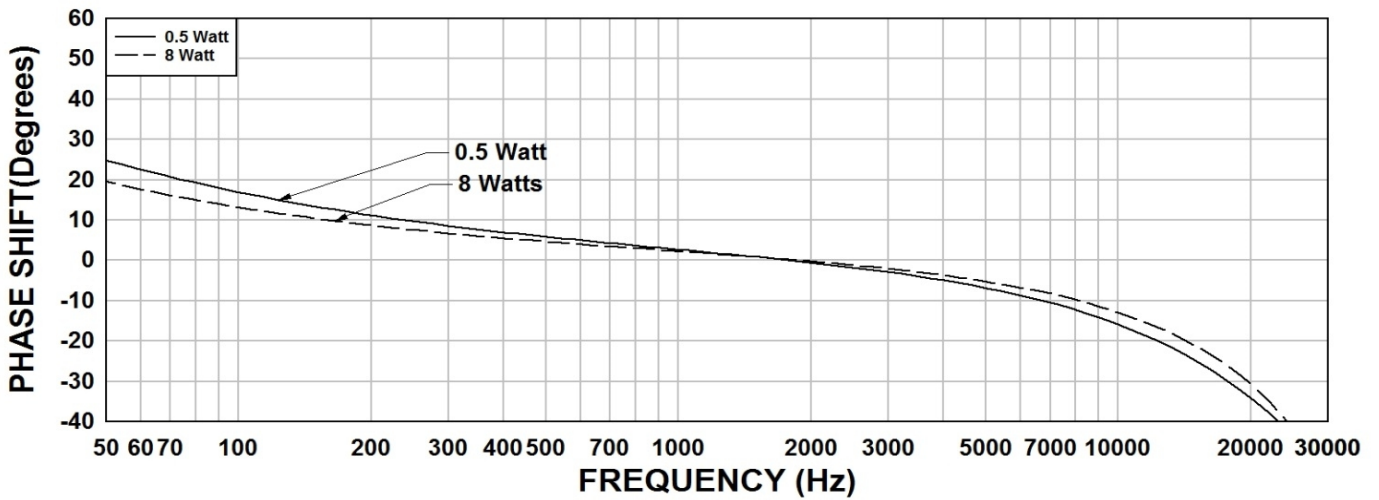
## TYPICAL TEST CIRCUIT



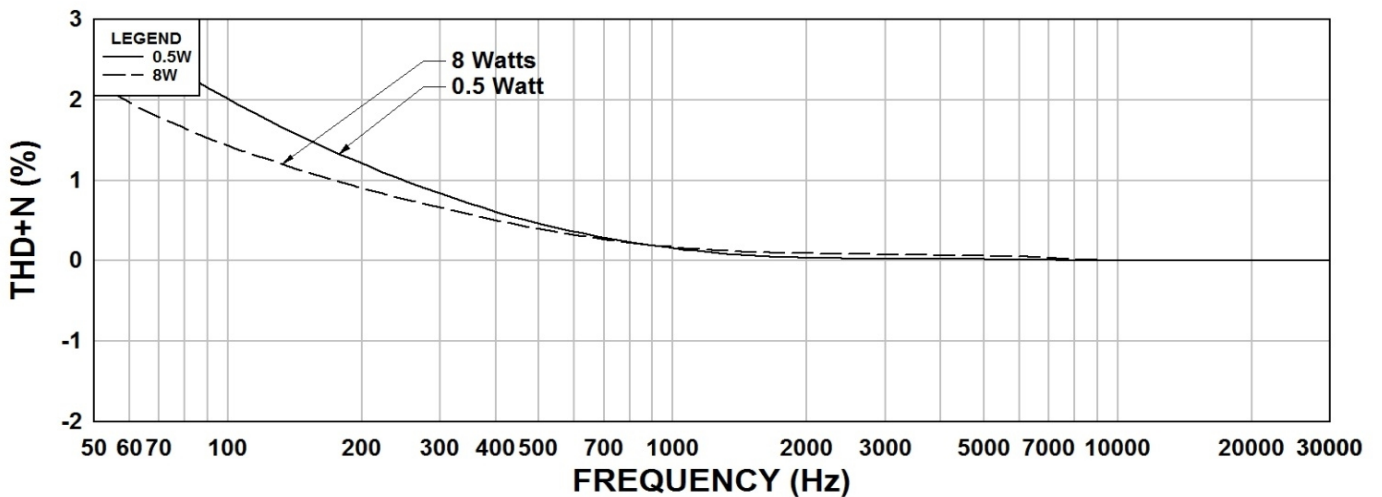
### 117E8 Frequency Response 0.5W & 8W



### 117E8 PHASE SHIFT 0.5W & 8W



### 117E8 THD+N 0.5W & 8W



This drawing and the information in it is the property of Hammond Manufacturing. It may not be reproduced, transmitted or used in any manner whatsoever without the written permission of Hammond Manufacturing. Data subject to change without notice.