

117F4

70 V LINE AUDIO TRANSFORMER

- Couple 8ohm speakers to 70volt line outputs of amplifiers.
- Up to 5 power tap levels available
- Primary taps marked in watts (no calculation necessary), to match speaker power.
- Frequency response 100Hz. to 10Khz. (1 db. reference @1 KHz.)
- Distortion is less than 1.25% @ 100 Hz. at maximum power.
- All models have solder lugs, also suitable for slip on jumper connections.
- Total power requirements of speakers should not exceed the rated power of each transformer or rated power of the amplifier.

ELECTRICAL SPECIFICATIONS

Characteristics	Typical
System Voltage	70V
Power Rating	4 Watts
Insertion Loss	<2dB
DCR	
COM - ¼ W	336Ω TYP
Input	0.40Ω TYP
INDUCTANCE/IMPEDANCE	
@1.0 KHz, 1V OC	
COM - ¼W	7.30H / 42.6KΩ
COM - ½W	3.92H / 22.4KΩ
COM-1W	2.132H / 11.80KΩ
COM-2W	1.189H / 6.29KΩ
COM-4W	674.2mH / 3.39KΩ
Input	8.50mH / 32.30Ω
LEAKAGE INDUCTANCE	
@1.0 KHz, 1V SC	
¼W/ 4W	653.4mH / 200mH
Dielectric Strength	500VRMS
Temperature Range	-40 To 105°C

TEST CONDITIONS

Measurement instruments:

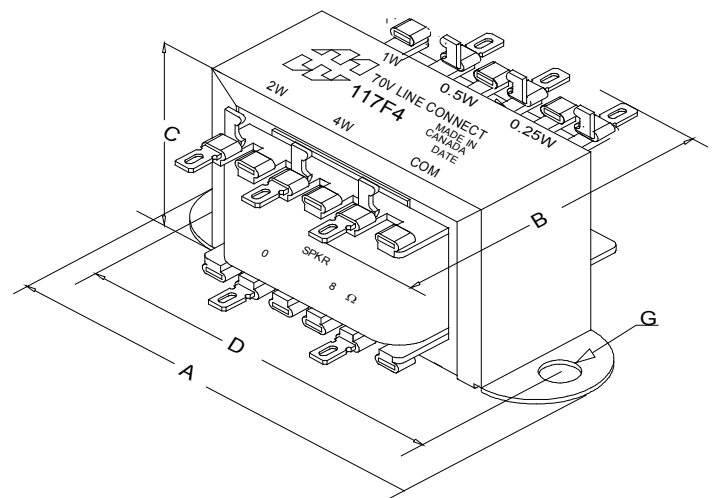
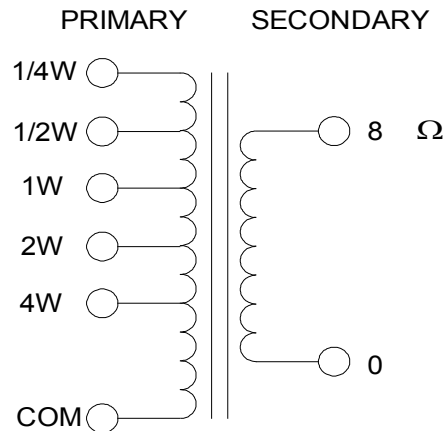
D scope series iii audio analyzer
Wayne Kerr 3255B with a 3265B

Keithley 2010 DVM

Hp4192a impedance analyzer

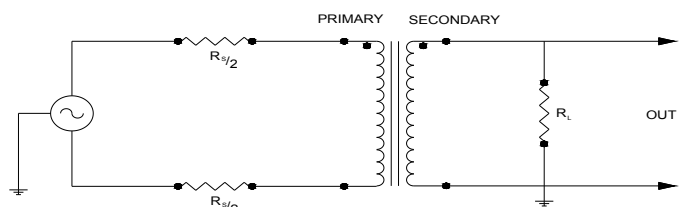
* All graphs input level 27dBm @1.0KHz reference.

**The results are typical and are subject to normal manufacturing and electrical tolerances.

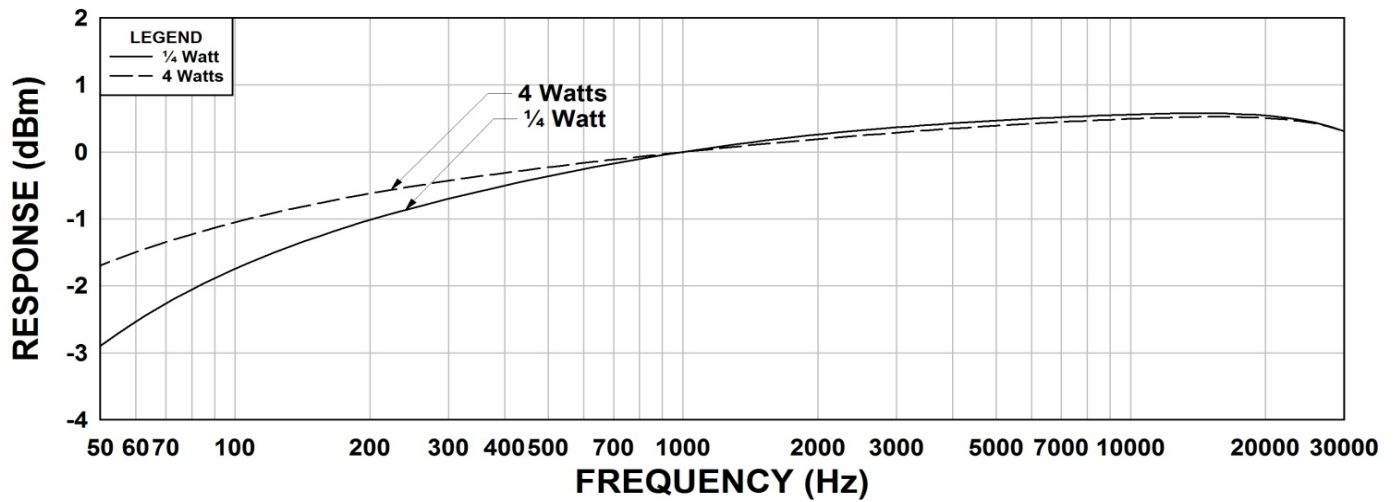


Dimensions			
A	2.813" ±0.063	D	2.38" ±0.063
B	1.875" ±0.125	G	0.187" ±0.015
C	1.69" MAX.		

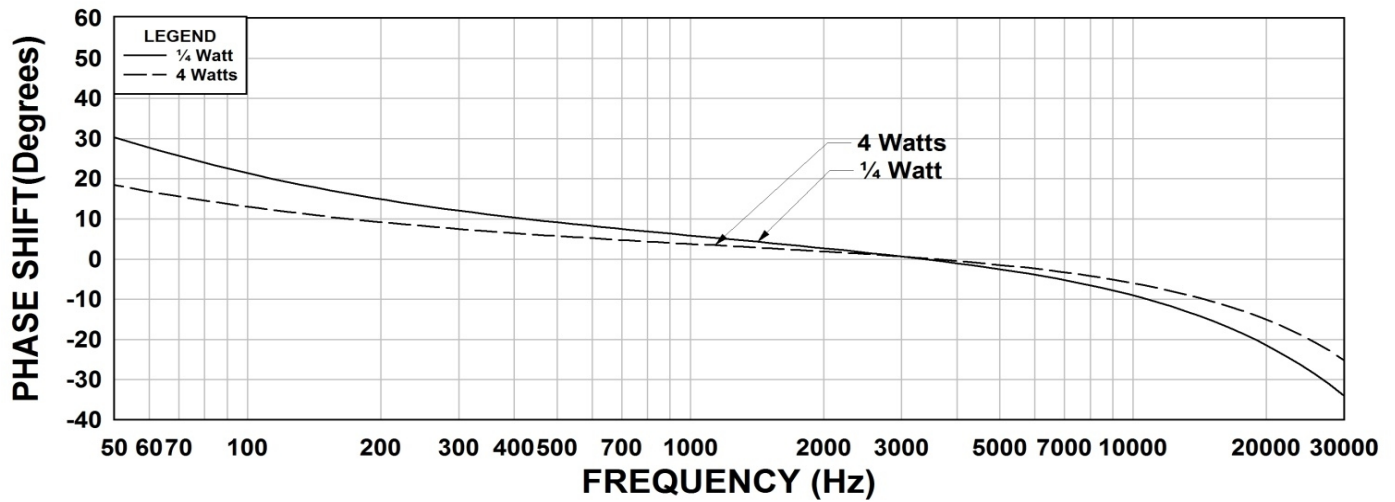
TYPICAL TEST CIRCUIT



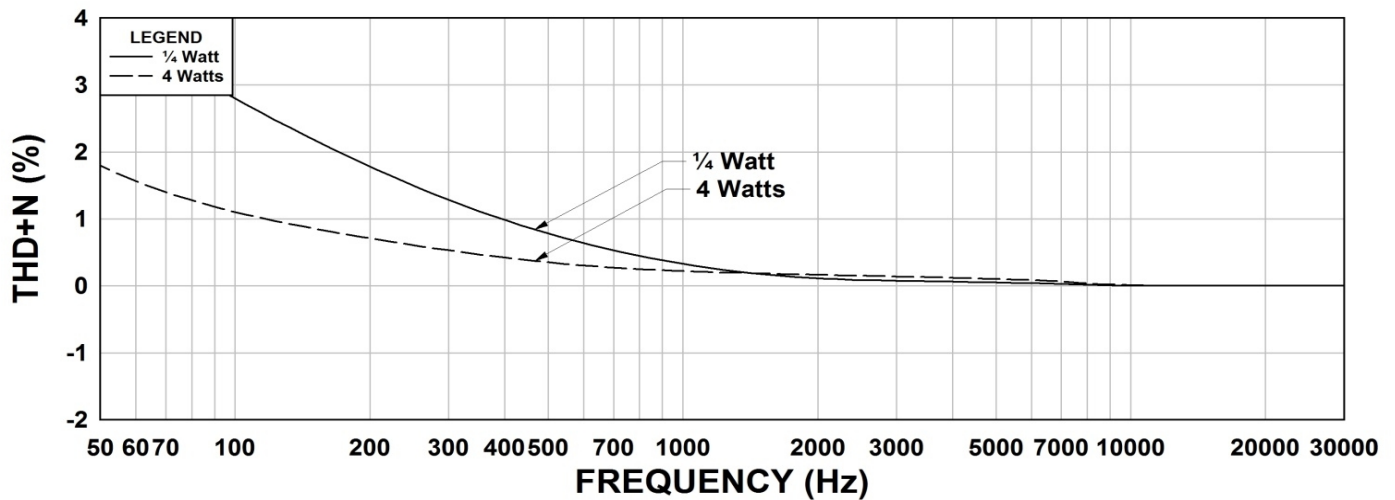
117F4 Frequency Response ¼W & 4W



117F4 Phase Shift ¼W & 4W



117F4 THD+N ¼W & 4W



This drawing and the information in it is the property of Hammond Manufacturing. It may not be reproduced, transmitted or used in any manner whatsoever without the written permission of Hammond Manufacturing. Data subject to change without notice.