

117J4

25 V LINE AUDIO TRANSFORMER

- Couple 3.2ohm speakers to 25volt line outputs of amplifiers.
- Up to 5 power tap levels available
- Primary taps marked in watts (no calculation necessary), to match speaker power.
- Frequency response 100Hz. to 10Khz. (1 db. reference @1 KHz.)
- Distortion is less than 1.25% @ 100 Hz. at maximum power.
- All models have solder lugs, also suitable for slip on jumper connections.
- Total power requirements of speakers should not exceed the rated power of each transformer or rated power of the amplifier.

ELECTRICAL SPECIFICATIONS

Characteristics	Typical
System Voltage	25V
Power Rating	4 Watts
Insertion Loss	<2dB
DCR	
COM - ¼ W	48.6Ω TYP
Input	0.21Ω TYP
INDUCTANCE/IMPEDANCE	
	@1.0 KHz, 1V OC
COM - ¼W	2.24H / 13.28KΩ
COM - ½W	1.20H / 7.08KΩ
COM-1W	658mH / 3.81KΩ
COM-2W	360mH / 2.04KΩ
COM-4W	23.76mH / 1.09KΩ
Input	5.07mH / 27.4Ω
LEAKAGE INDUCTANCE	
	@1.0 KHz, 1V SC
¼W/ 4W	105mH / 23.76mH
Dielectric Strength	
	500VRMS
Temperature Range	
	-40 To 105°C

TEST CONDITIONS

Measurement instruments:

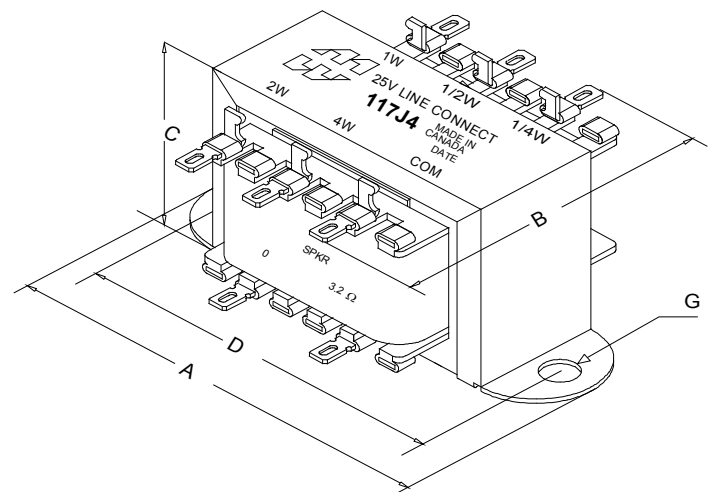
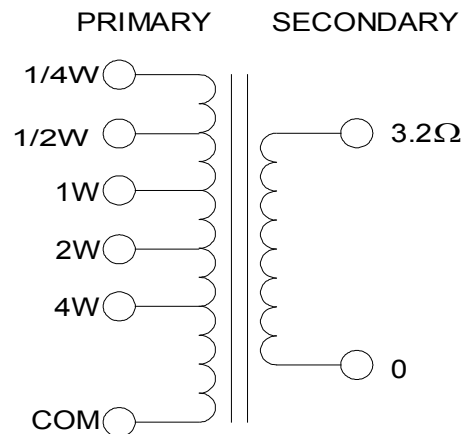
D scope series iii audio analyzer
Wayne Kerr 3255B with a 3265B

Keithley 2010 DVM

Hp4192a impedance analyzer

* All graphs input level 27dBm @1.0KHz reference.

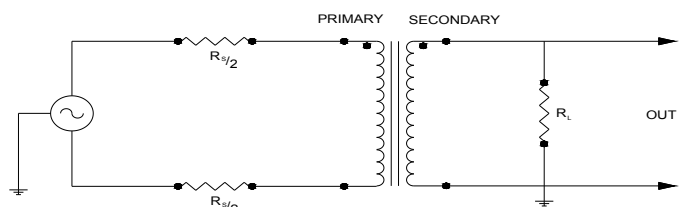
**The results are typical and are subject to normal manufacturing and electrical tolerances.



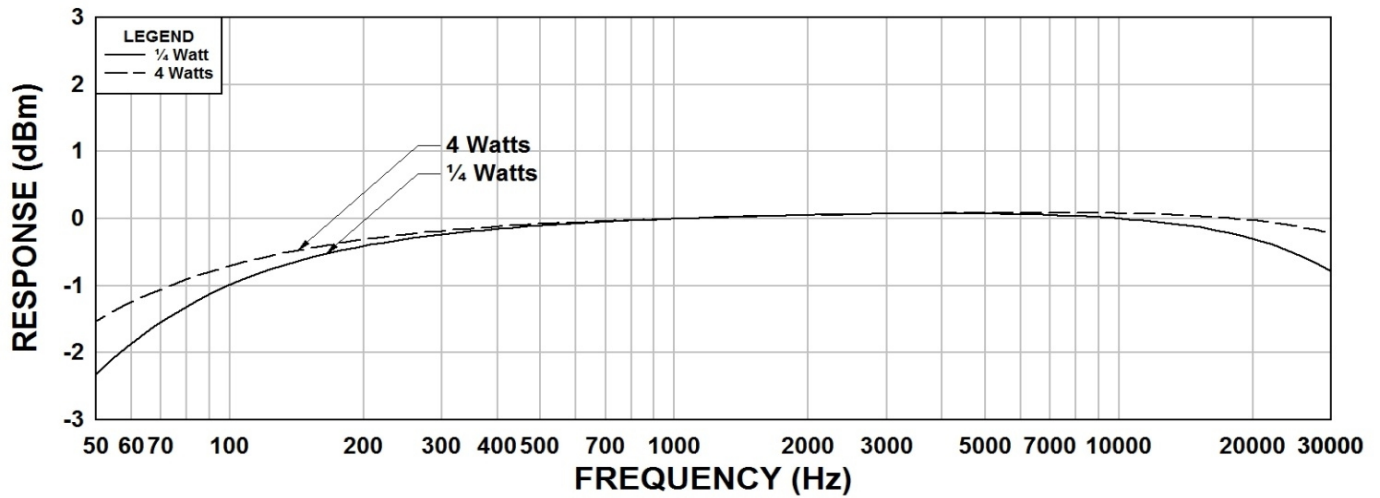
Dimensions

A	2.81" ±0.063	D	2.38" ±0.063
B	1.50" REF.	G	0.187" ±0.015
C	1.69" MAX.		

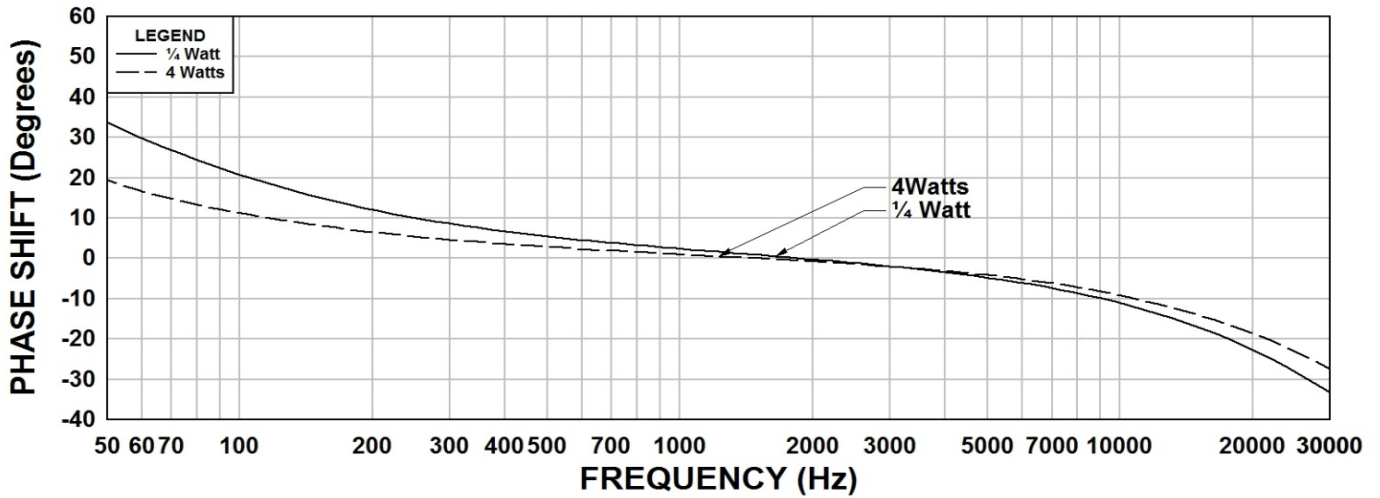
TYPICAL TEST CIRCUIT



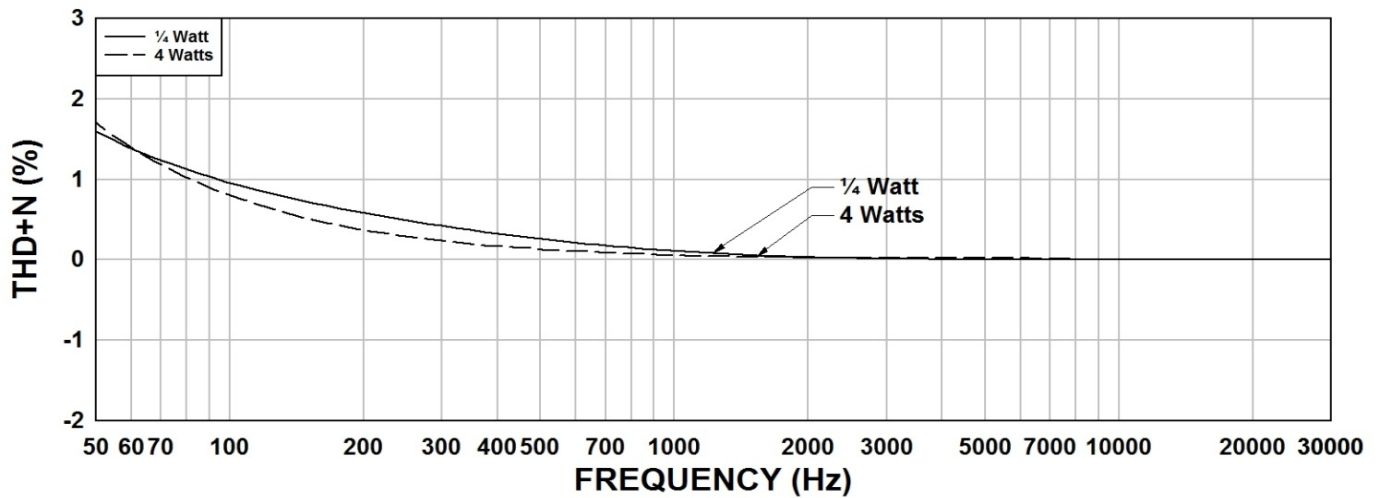
117J4 Frequency Response ¼W & 4 W



117J4 Phase Shift ¼W & 4W



117J4 THD+N ¼W & 4W



This drawing and the information in it is the property of Hammond Manufacturing. It may not be reproduced, transmitted or used in any manner whatsoever without the written permission of Hammond Manufacturing. Data subject to change without notice.