

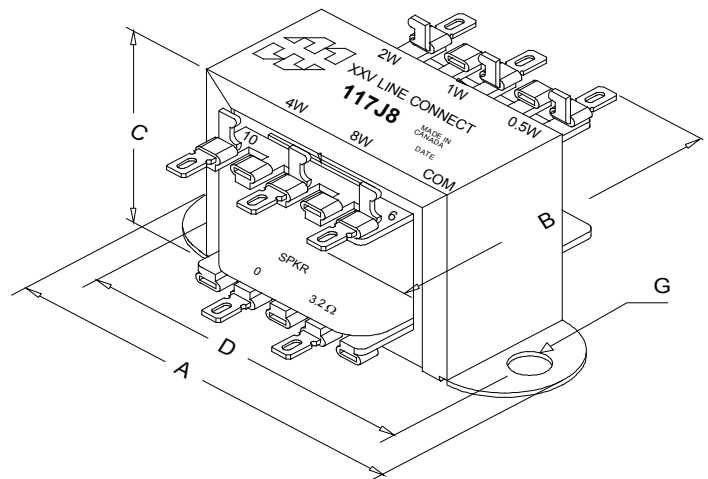
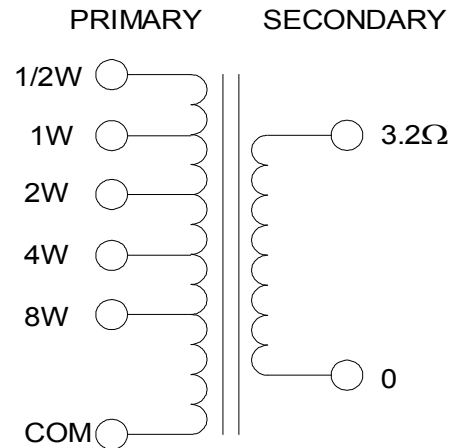
117J8

25 V LINE AUDIO TRANSFORMER

- Couple 3.2ohm speakers to 25volt line outputs of amplifiers.
- Up to 5 power tap levels available
- Primary taps marked in watts (no calculation necessary), to match speaker power.
- Frequency response 100Hz. to 10Khz. (1 db. reference @1 KHz.)
- Distortion is less than 1.25% @ 100 Hz. at maximum power.
- All models have solder lugs, also suitable for slip on jumper connections.
- Total power requirements of speakers should not exceed the rated power of each transformer or rated power of the amplifier.

ELECTRICAL SPECIFICATIONS

Characteristics	Typical
System Voltage	25V
Power Rating	8 Watts
Insertion Loss	<2dB
DCR	
COM - ½ W	20Ω TYP
Input	0.15Ω TYP
INDUCTANCE/IMPEDANCE	
@1.0 KHz, 1V OC	
COM - ½W	815mH / 4.77KΩ
COM - 1W	443mH / 2.55KΩ
COM-2W	240mH / 1.35KΩ
COM-4W	138mH / 748Ω
COM-8W	78mH / 404Ω
Input	3.72mH / 18.2Ω
LEAKAGE INDUCTANCE	
@1.0 KHz, 1V SC	
½W/ 8W	39.6mH / 9.7mH
Dielectric Strength	500VRMS
Temperature Range	-40 To 105°C



Dimensions			
A	3.250" ±0.063	D	2.813" ±0.063
B	2.239" REF.	G	0.187" ±0.015
C	1.935" MAX.		

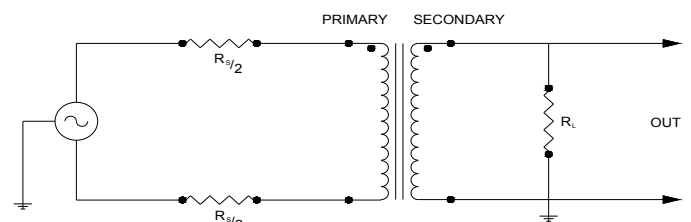
TEST CONDITIONS:

Measurement instruments:
 Hp4192a impedance analyzer Keithley 2002 DVM
 D scope series iii audio analyzer Hp3456a DVM

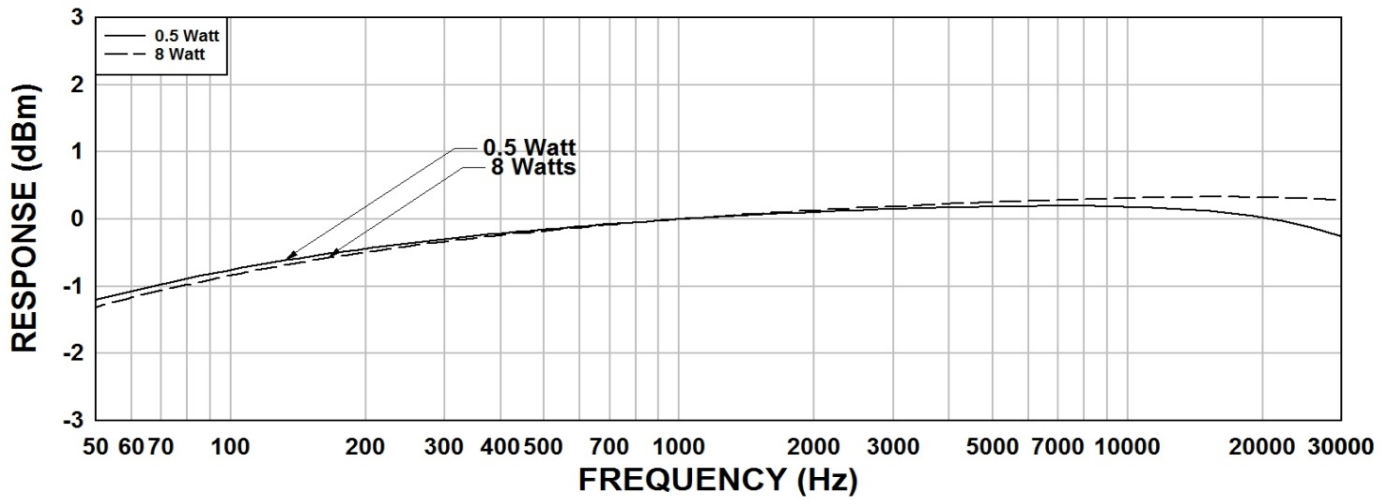
* All graphs input level 27dBm.

**The results are typical and are subject to normal manufacturing and electrical tolerances.

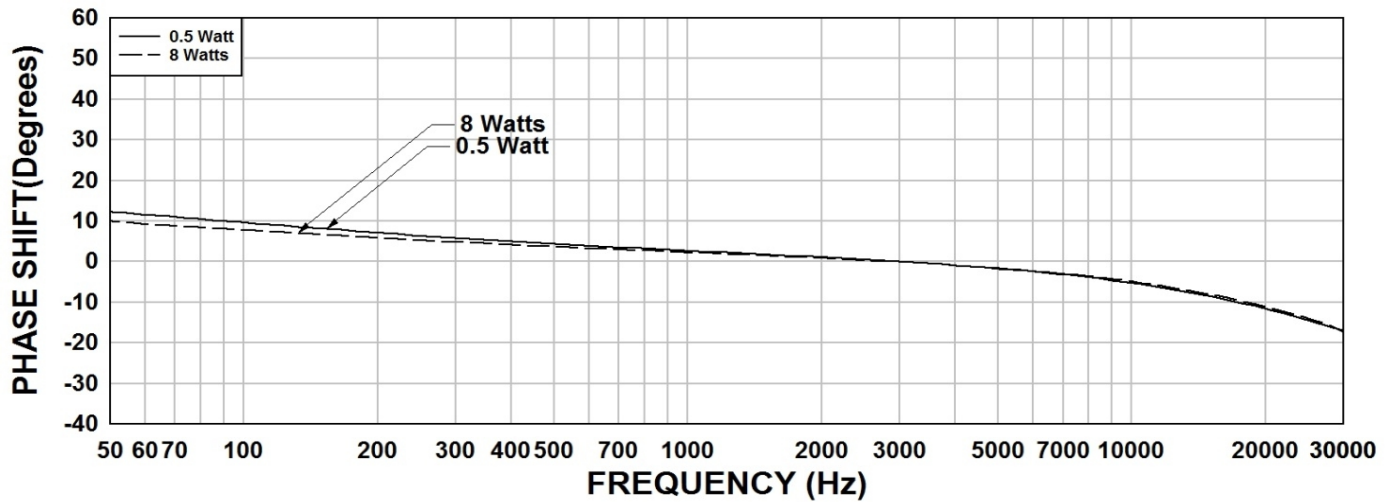
TYPICAL TEST CIRCUIT



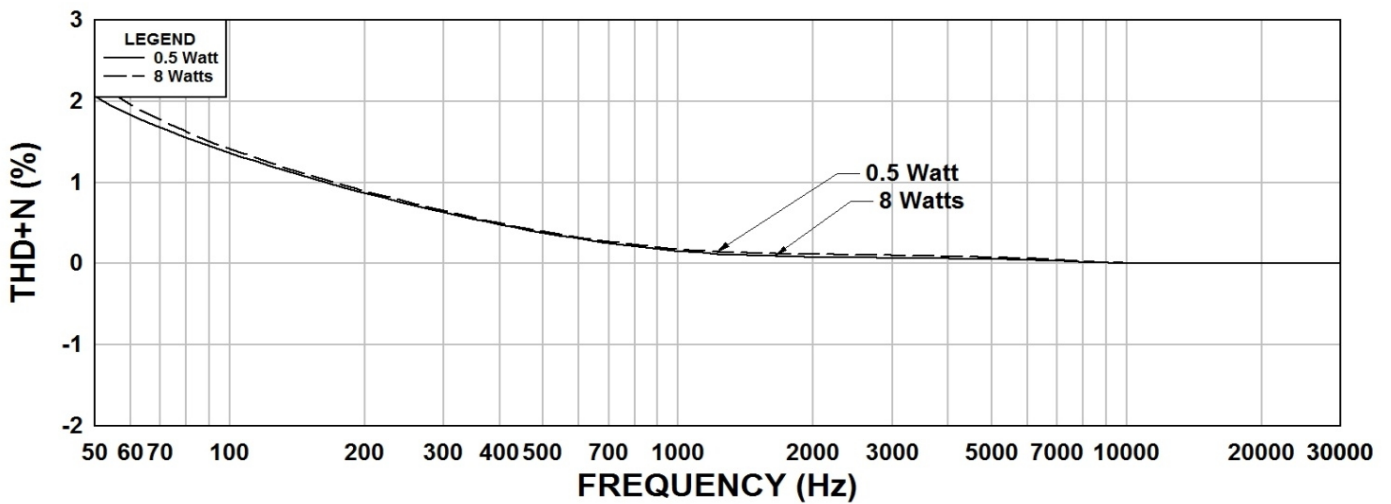
117J8 Frequency Response 0.5W & 8W



117J8 Phase Shift 0.5W & 8W



117J8 THD+N 0.5W & 8W



This drawing and the information in it is the property of Hammond Manufacturing. It may not be reproduced, transmitted or used in any manner whatsoever without the written permission of Hammond Manufacturing. Data subject to change without notice.